



526 BOSTON POST ROAD  
WAYLAND, MA 01778

T: 508-358-0790  
F: 508-358-0791

# Calcutt Middle School – FEI Projects

## 100% Construction Documents

Central Falls, RI  
Ai3 Project #2202.00

### Addendum #2

June 7, 2022

The attention of Bidders submitting proposals for Calcutt Middle School – FEI Projects 100% Construction Documents is called to the following changes to the 100% Documents and Specifications dated May 20, 2022 as prepared by Ai3 Architects, LLC. The items set forth therein below, whether of revision, omission, addition, substitution or clarification are all to be included as changes to Information to Bidders, the Conditions of the Contract, Specifications and Drawings of the Contract.

**The number of this Addendum (Number 2) must be entered in the appropriate spaces provided on the Bid Form.**

#### **CLARIFICATIONS:**

- ADD 2-001 Bidder question: *108213 for Exterior Grills and Screens are not identified on drawings but are in the specifications, please advise.*  
Response: Detail 9/A2.30 – REMOVE note “Existing Louver to remain. G.C. to coordinate the removal and replacement the existing louver for access as needed” and REPLACE with “Contractor shall remove existing metal louver and replace with a new metal louver per specification section 10 82 13. GC to verify in field the metal louver dimensions. Color shall match existing adjacent metal.”

#### **ATTACHMENTS:**

- ADD 2-002 *Drawings Cover Page:* remove Cover Page included in Add #1 and replace with the Drawings Cover Page included in this addendum, Add #2.
- ADD 2-003 *Landscape Drawings:* remove drawings L1.21R1 & L3.01-R1 and replace them with L1.21-R2 & L3.01-R2.
- ADD 2-004 *Architectural Drawings:* remove drawing A2.20 and replace it with drawing A2.20R1.

Calcutt Middle School – FEI Projects

100% DOCUMENTS

Central Falls, RI

ADD #2 – PAGE 1

Calcutt Middle School – FEI Projects

Ai3 Architects, L.L.C.

**SPECIFICATIONS:**

ADD 2-005 Document 00 11 13 – Advertisement for Bids, REMOVE the following paragraph in its entirety, *“Any Questions & Responses will be included in an Addendum to be issued on June 2, 2022, on the City Website.”*

**END OF ADDENDUM #2**

Calcutt Middle School – FEI Projects

100% DOCUMENTS

Central Falls, RI

ADD #2 – PAGE 2



# CALCUTT - FEI PROJECTS

MAY 20, 2022

## ARCHITECT

Ai3 ARCHITECTS, INC.

526 Boston Post Road  
Wayland, MA 01778  
Tel: (508) 358-0790

## LANDSCAPE ARCHITECT

TRAVERSE LANDSCAPE ARCHITECTS

150 Chestnut Street, 4th Floor  
Providence, RI 02903  
Tel: (401) 383-4950

## SPECIFICATIONS

WIL-SPEC, LLC

375 Main Street  
Boxford, MA 01921  
Tel: (781) 598-6789

## CODE CONSULTANT

COSENTINI ASSOCIATES, INC.

101 Federal Street, 6th Floor  
Boston, MA 02110  
Tel: (617) 748-7800

## OWNERS PROJECT MANAGER

PEREGRINE GROUP, LLC

20 Newman Avenue, Suite 1005  
Rumford, RI 02916  
Tel: (401) 270-0600

## MECH. / ELEC. / PLUMB. ENGINEERS

GRIFFITH & VARY, INC.

12 Kendrick Road  
Wareham, MA 02571  
Tel: (508) 295-0050

## COST ESTIMATOR

PROJECT MANAGEMENT & COST

20 Downer Ave., Suite 1C  
Hingham, MA 02043  
Tel: (781) 740-6007



## GENERAL

G0.01 VOLUME 1 DRAWING LIST

## LANDSCAPE

L1.21R2 HARDSCAPE PLAN  
L3.01R2 HARDSCAPE DETAILS

## DEMOLITION

D0.01R1 DEMO SHEET NOTES  
D0.11R1 DEMO SHEET FIRST FLOOR  
D0.12R1 DEMO SHEET SECOND FLOOR  
D0.13R1 DEMO SHEET THIRD FLOOR

## ARCHITECTURAL

A0.01 MASTER KEYNOTE LIST  
A0.02 ABBREVIATIONS, SYMBOLS & MATERIALS INDICATIONS  
A0.03 PARTITION TYPES  
A1.00 OVERALL LOWER LEVEL FLOOR PLAN  
A1.10 OVERALL FIRST FLOOR PLAN  
A1.20 OVERALL SECOND FLOOR PLAN  
A1.30 OVERALL THIRD FLOOR PLAN  
A2.10R1 MAIN ENTRY FLOOR PLAN, EXTERIOR ELEVATIONS AND DETAILS  
A2.11R1 MAIN ENTRY SECTIONS AND DETAILS  
A2.12R1 MAIN ENTRY CANOPY ROOF PLANS, RCP, SECTIONS, AND DETAILS  
A2.13R1 REAR ENTRY FLOOR PLANS, RCP AND EXTERIOR ELEVATIONS  
A2.14R1 REAR ENTRY INTERIOR ELEVATIONS, STAIR ELEVATIONS AND DETAILS  
A2.20R1 MEDIA CENTER ENLARGED PLAN AND RCP  
A2.21R1 MEDIA CENTER INTERIOR ELEVATIONS AND DETAILS  
A2.30R1 SCIENCE LAB ENLARGED PLAN, RCP, INTERIOR ELEVATIONS, AND DETAILS  
A2.31R1 SCIENCE LAB DETAILS  
A2.32R1 DOOR SCHEDULE, DOOR AND FRAME TYPES, AND DETAILS  
A2.33R1 EXTERIOR STOREFRONT TYPES AND DETAILS  
A3.00 ROOM FINISH SCHEDULE, TRANSITION DETAILS AND CEILING DETAILS  
A3.01 MARKERBOARD TYPES, CASEWORK TYPES AND DETAILS  
A4.01 MAIN ENTRY AND REAR ENTRY PAINT ELEVATIONS AND FLOOR PLANS  
A4.02 MAIN ENTRY, REAR ENTRY, AND METAL PANELS EXTERIOR PAINT ELEVATIONS  
A4.03 MEDIA CENTER FLOOR FINISH PLAN AND RCP FINISH PLAN  
A4.04 MEDIA CENTER PAINT ELEVATIONS  
A4.05 SCIENCE LAB PAINT ELEVATIONS AND FLOOR PLANS  
A5.01 SIGNAGE LOCATION FIRST FLOOR PLAN  
A5.02 SIGNAGE LOCATION SECOND FLOOR PLAN  
A5.03 SIGNAGE ELEVATIONS

## FIRE PROTECTION

FP0.01 FIRE PROTECTION LEGEND  
FP1.11 FIRE PROTECTION MEDIA CENTER SECOND FLOOR PLAN  
FP6.01 FIRE PROTECTION DETAILS

## PLUMBING

P0.01 PLUMBING LEGEND  
P01.01 PLUMBING SCIENCE CLASSROOMS DEMOLITION PLANS  
P01.02 PLUMBING SCIENCE CLASSROOMS RENOVATION PLANS

## PLUMBING

P1.00 PLUMBING OVERALL SECOND FLOOR PLAN  
P1.01R1 PLUMBING SCIENCE CLASSROOMS RENOVATION PLANS  
P5.01 PLUMBING SCHEDULES  
P6.01 PLUMBING DETAILS

## MECHANICAL

M0.01 MECHANICAL LEGEND  
M01.11 MECHANICAL MEDIA CENTER DEMOLITION DUCTWORK PLAN  
M01.12 MECHANICAL SCIENCE CLASSROOM DEMOLITION DUCTWORK PLAN

## MECHANICAL

M1.11 MECHANICAL MEDIA CENTER DUCTWORK PLAN  
M1.12 MECHANICAL SCIENCE CLASSROOM DUCTWORK PLAN  
M1.13 MECHANICAL MEDIA CENTER ROOF PLAN  
M1.14 MECHANICAL SCIENCE CLASSROOMS ROOF PLAN  
M5.01 MECHANICAL SCHEDULES  
M6.01 MECHANICAL DETAILS

## ELECTRICAL

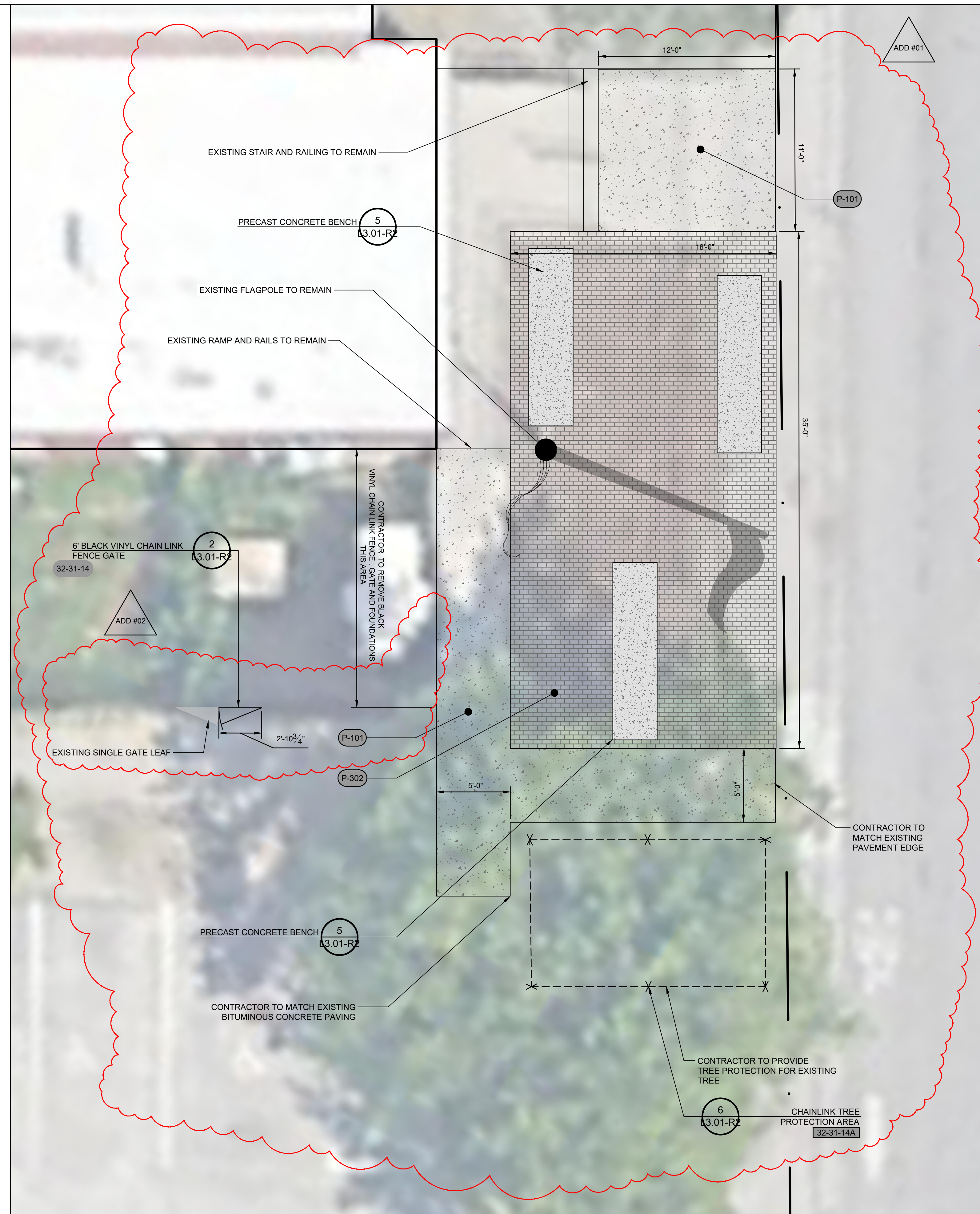
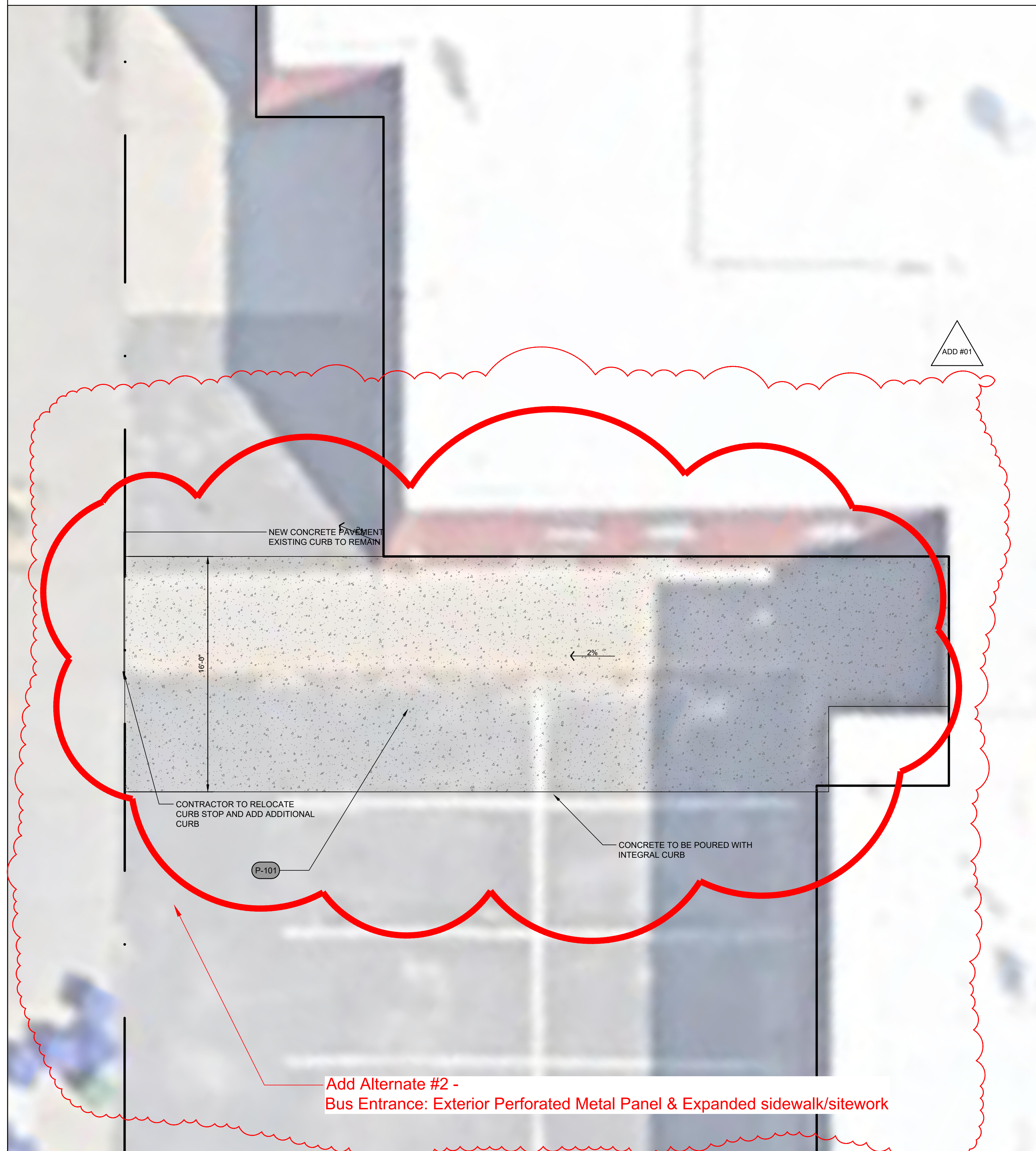
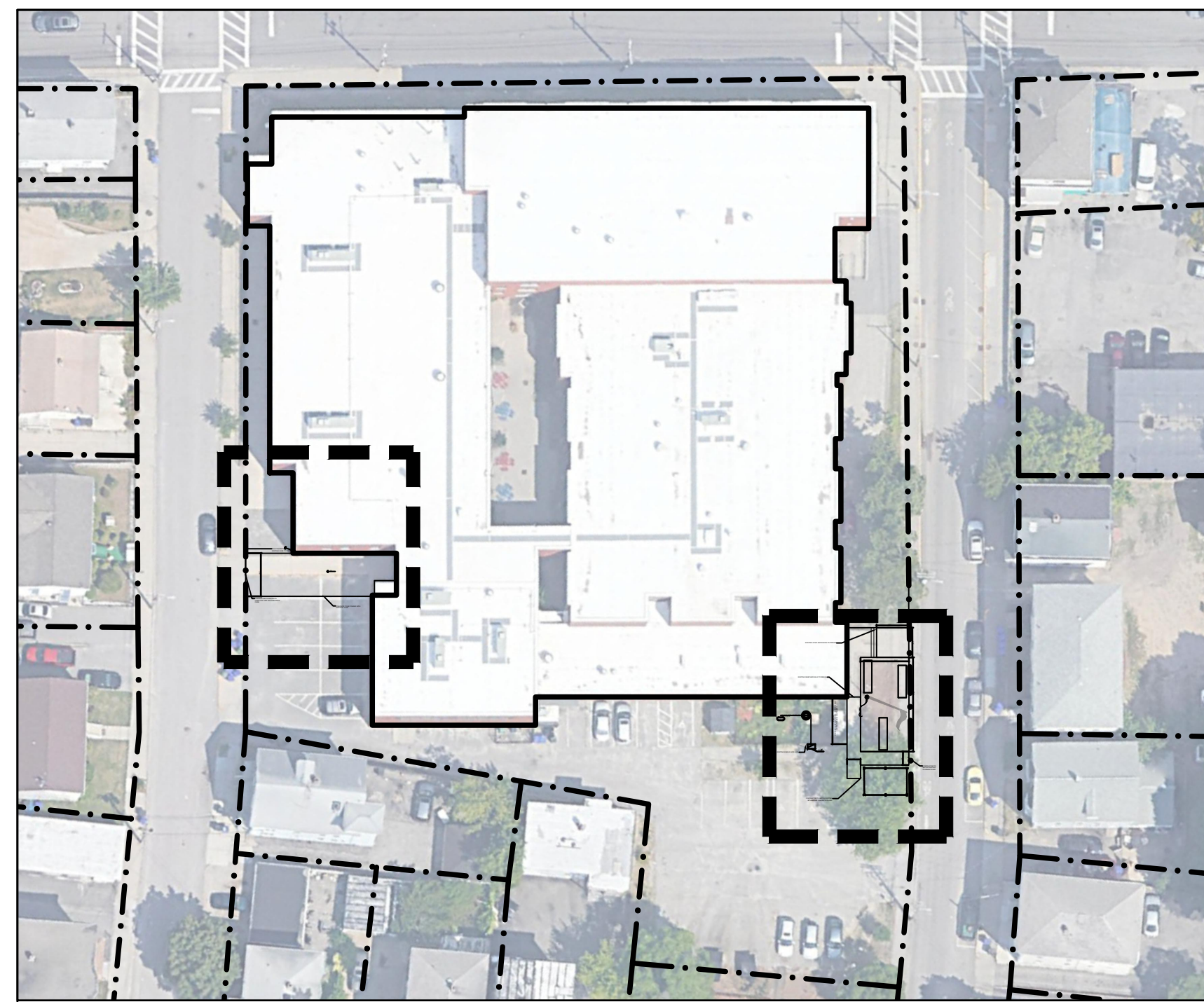
E0.01R1 ELECTRICAL LEGEND  
E01.11 ELECTRICAL MEDIA CENTER LIGHTING DEMO PLAN  
E01.12 ELECTRICAL SCIENCE CLASSROOM 202 LIGHTING DEMO PLAN  
E02.21 ELECTRICAL SCIENCE CLASSROOMS 223 & 302 POWER DEMO PLAN  
E02.22 ELECTRICAL SCIENCE CLASSROOM 202 POWER DEMO PLAN  
E02.23 ELECTRICAL MEDIA CENTER POWER DEMO PLAN

## ELECTRICAL

E1.10 ELECTRICAL MAIN AND REAR ENTRY LIGHTING PLANS  
E1.11 ELECTRICAL MEDIA CENTER LIGHTING PLAN  
E1.12 ELECTRICAL SCIENCE CLASSROOM 202 LIGHTING PLAN  
E2.20 ELECTRICAL FIRST FLOOR OVERALL POWER PLAN  
E2.21 ELECTRICAL MEDIA CENTER POWER PLAN  
E2.22 ELECTRICAL SCIENCE CLASSROOM 202 POWER PLAN  
E2.23 ELECTRICAL ROOF POWER AND FIRE ALARM PART PLANS  
E5.01 ELECTRICAL SCHEDULES AND RISER DIAGRAMS  
E6.01R1 ELECTRICAL LIGHTING CONTROLS DETAILS

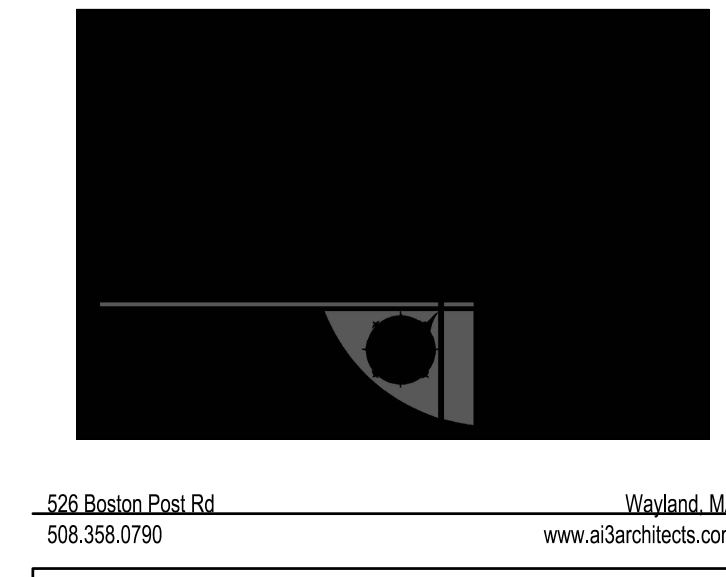


# 100% DOCUMENTS



**REFERENCE NOTES SCHEDULE**

SYMBOL	FENCES AND GATES DESCRIPTION	QTY	DETAIL	Sub-base Depth
(32-31-14)	BLACK VINYL CHAIN LINK DOUBLE GATE	1	2/L3.01-R2	32 31 14
(32-31-14A)	TREE PROTECTION	52 lf	6/L3.01-R2	
SYMBOL	CONCRETE DESCRIPTION	QTY	DETAIL	SPEC. SECTION
(P-101)	CONCRETE PAVING	1,222 sf	4/L3.01-R2	32 13 13
SYMBOL	UNIT PAVING DESCRIPTION	QTY	DETAIL	SPEC. SECTION
(P-302)	CONCRETE UNIT PAVERS	522 sf	3/L3.01-R2	32 14 00
SYMBOL	PRE CAST CONCRETE DESCRIPTION	QTY	DETAIL	SPEC. SECTION
(PG-101)	PRE CAST CONCRETE BENCH	3	5/L3.01-R2	03 48 14

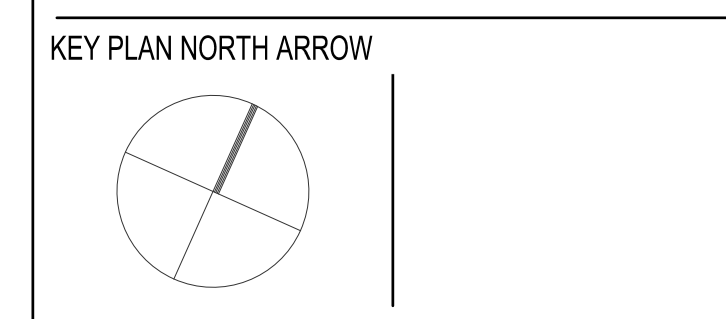


**TRAVERSE**  
landscape architects  
150 Chestnut Street, 4th Floor  
Providence, RI 02903  
401-383-4950  
www.traverseia.com



112 WASHINGTON ST  
CENTRAL FALLS, RI 02863

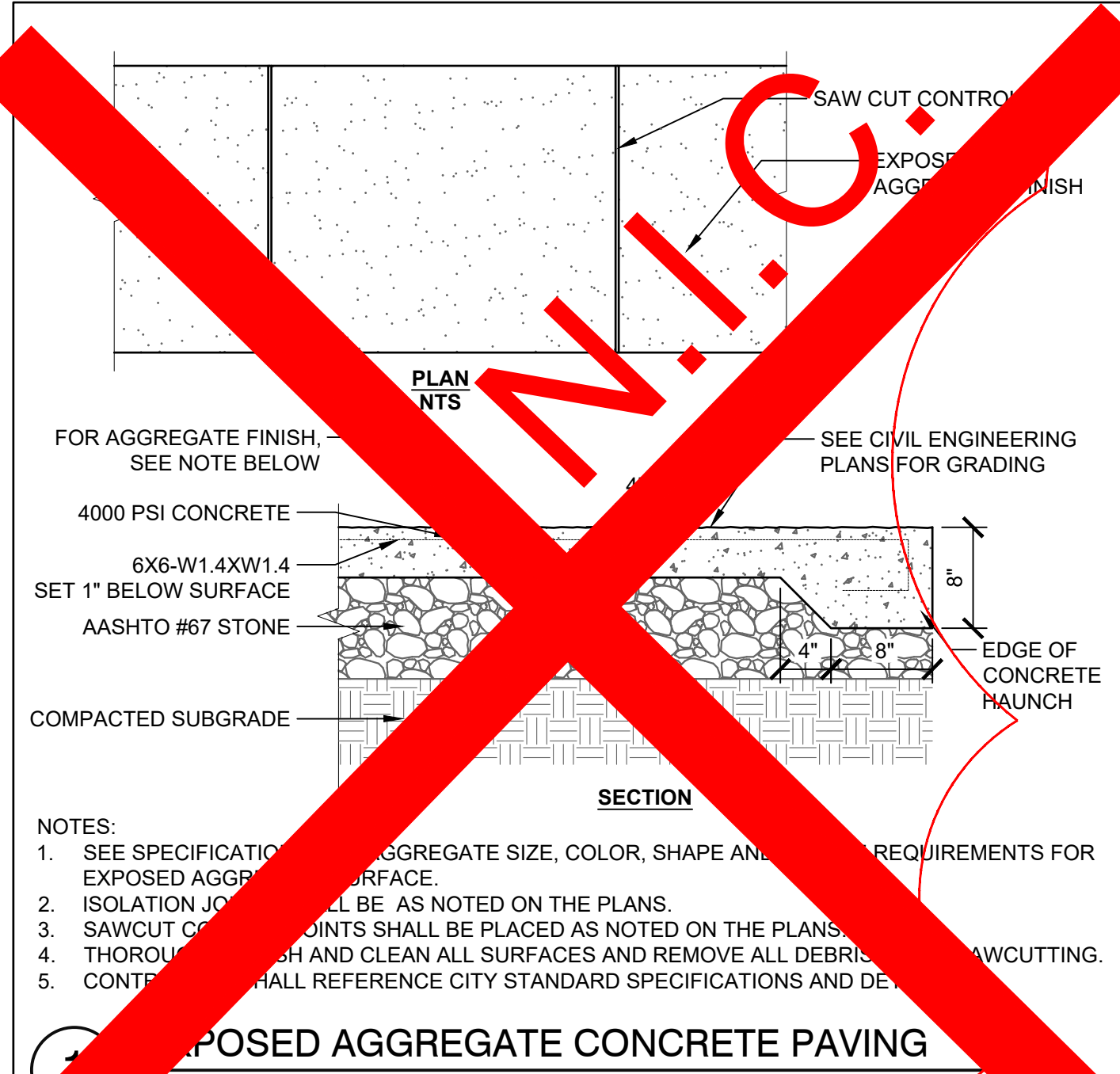
KEYNOTE LEGEND:



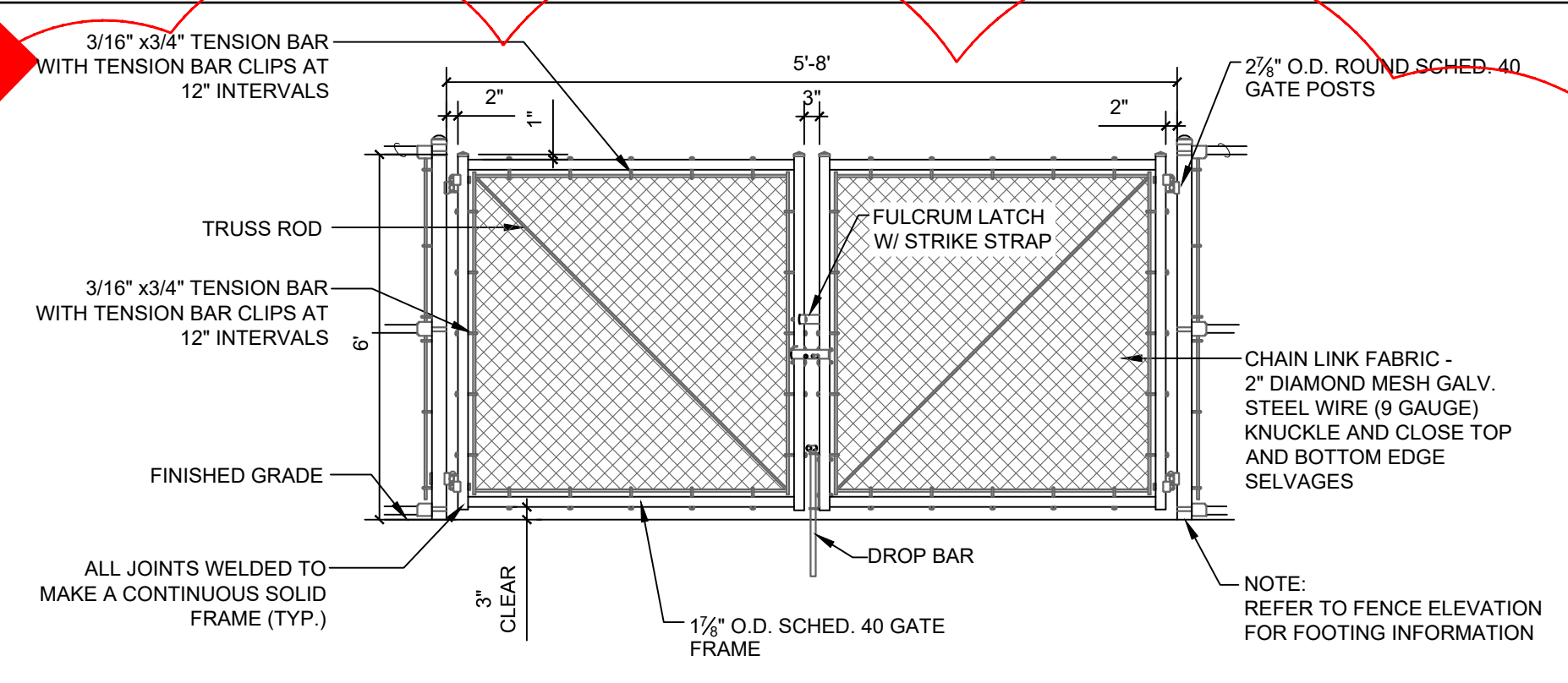
DRAWING NAME:  
**HARDSCAPE PLAN**

DRAWN BY: TJF  
REVIEWED BY: AE

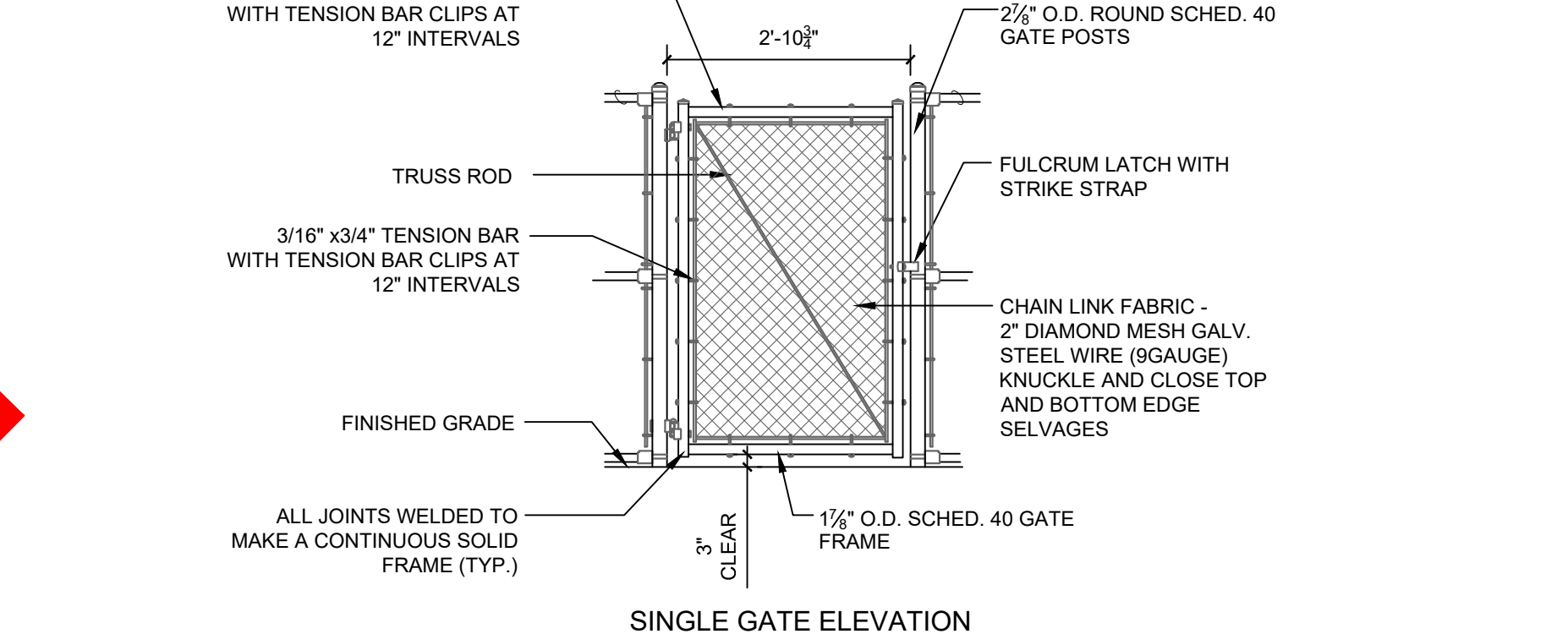
SCALE: 1/4" = 1'-0" DRAWING NUMBER:  
JOB NO.: K1033  
DATE: June 7, 2022 **L1.21-R2**



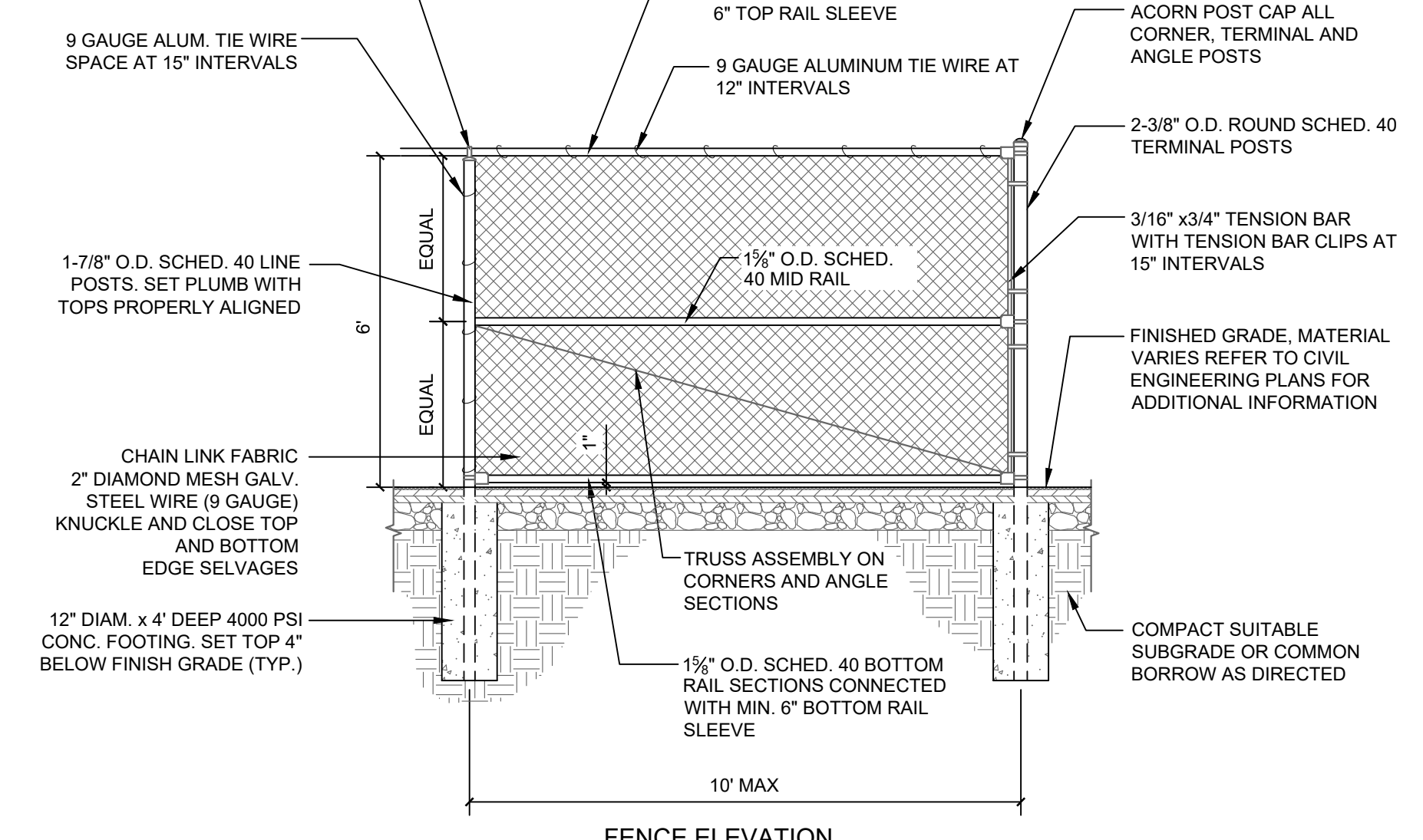
**PROPOSED AGGREGATE CONCRETE PAVING**  
 1\"/>



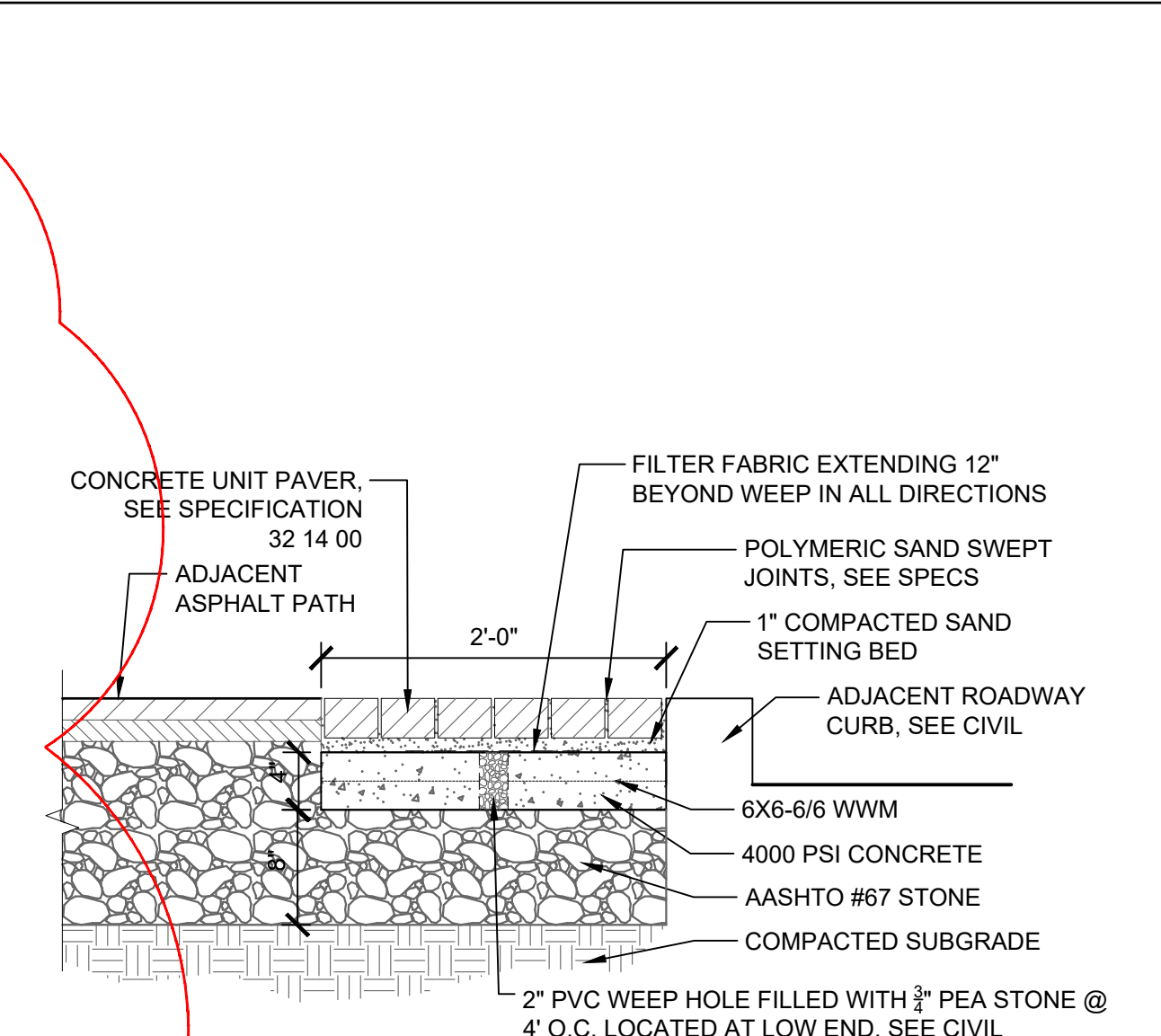
**DOUBLE GATE ELEVATION**



**SINGLE GATE ELEVATION**

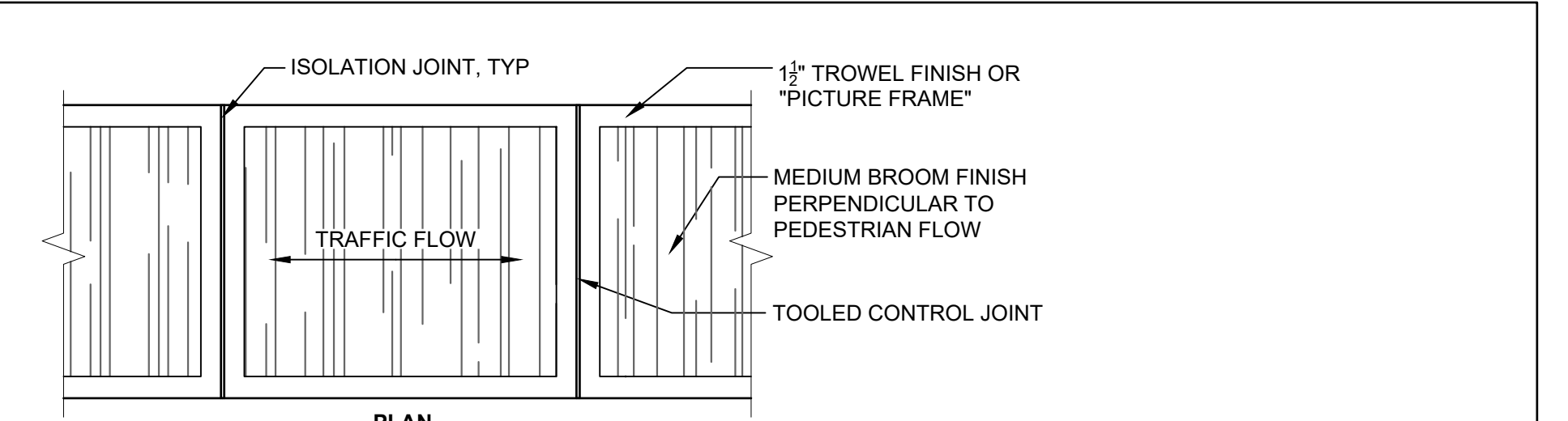


**6' BLACK VINYL CHAIN LINK FENCE GATE**



**UNIT PAVERS**

1. PAVES PATTERN SHALL BE RUNNING BOND PATTERN PERPENDICULAR TO CURB LINE

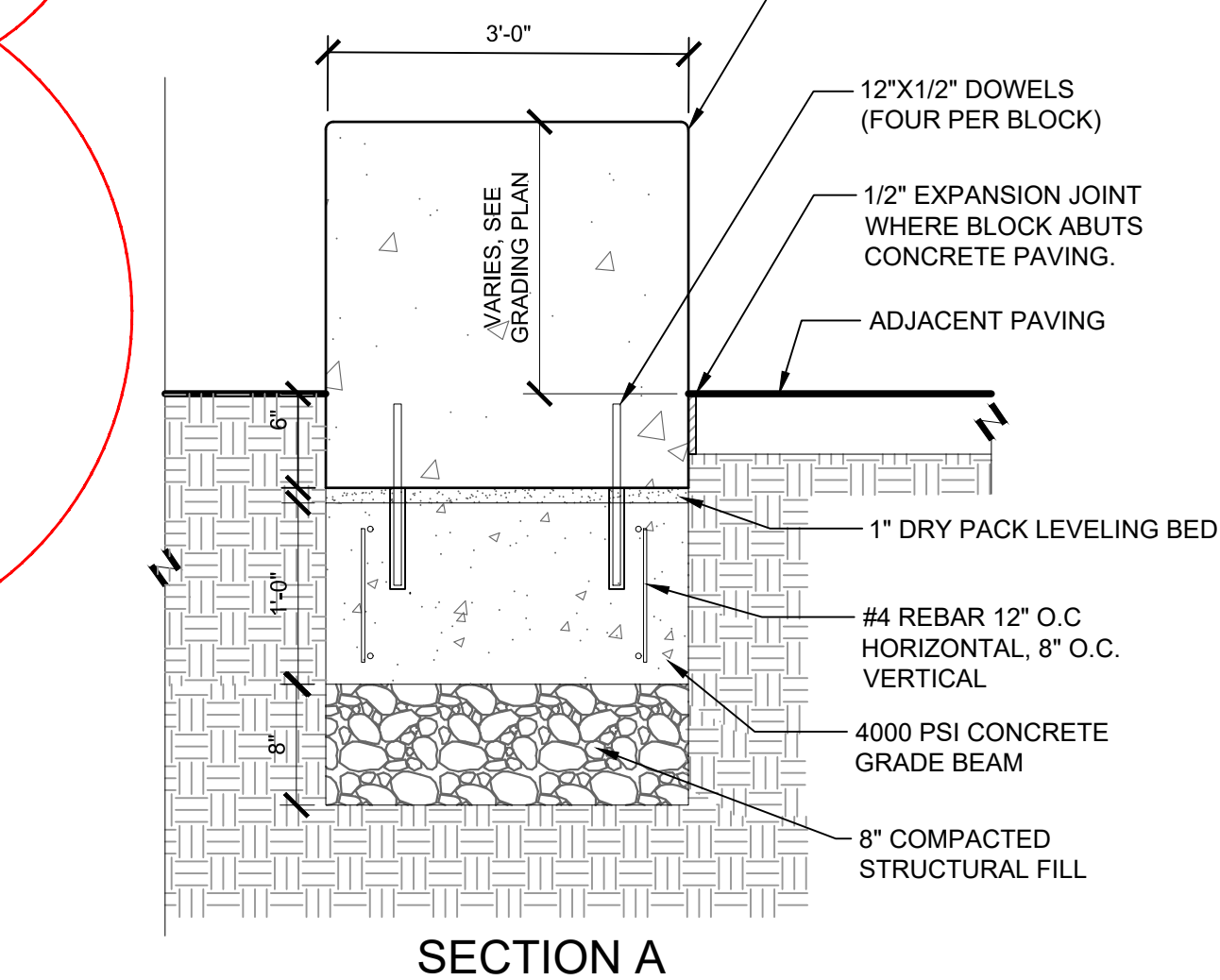


**CONCRETE PAVING**

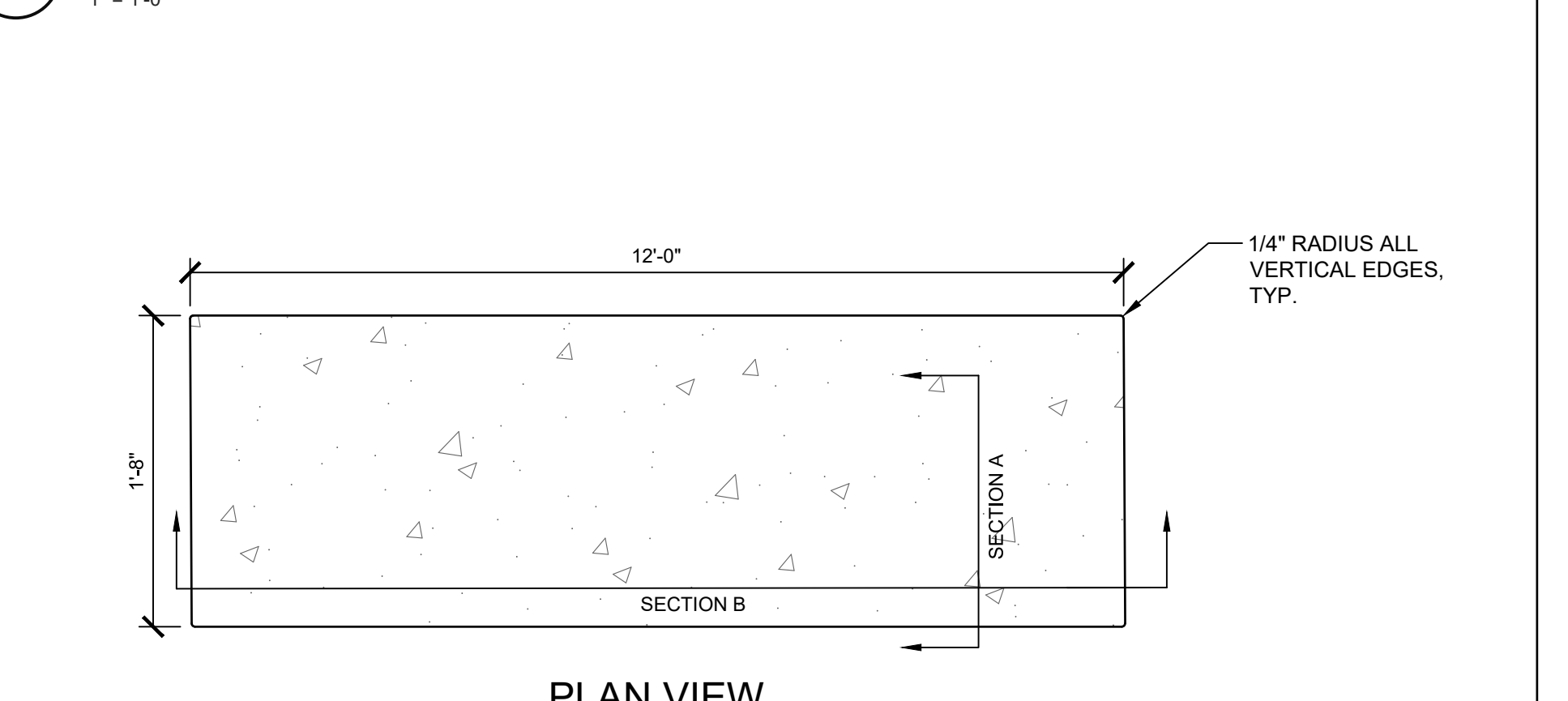
1. JOINTS SHALL BE TOOLED PER DETAILS AND SHALL BE PLACED AS FOLLOWS UNLESS OTHERWISE NOTED ON THE PLANS.  
 2. ISOLATION JOINTS SHALL BE INSTALLED AS NOTED ON THE PLANS.  
 3. CONTROL JOINTS SHALL BE PLACED AS NOTED ON THE PLANS.  
 4. BROOM FINISH SHALL BE PERPENDICULAR TO PEDESTRIAN TRAFFIC FLOW UNLESS OTHERWISE NOTED ON THE PLANS.  
 5. CONTRACTOR SHALL REFERENCE CITY OF CAMBRIDGE STANDARD SPECIFICATIONS AND DETAILS



**PRECAST CONCRETE BENCH**



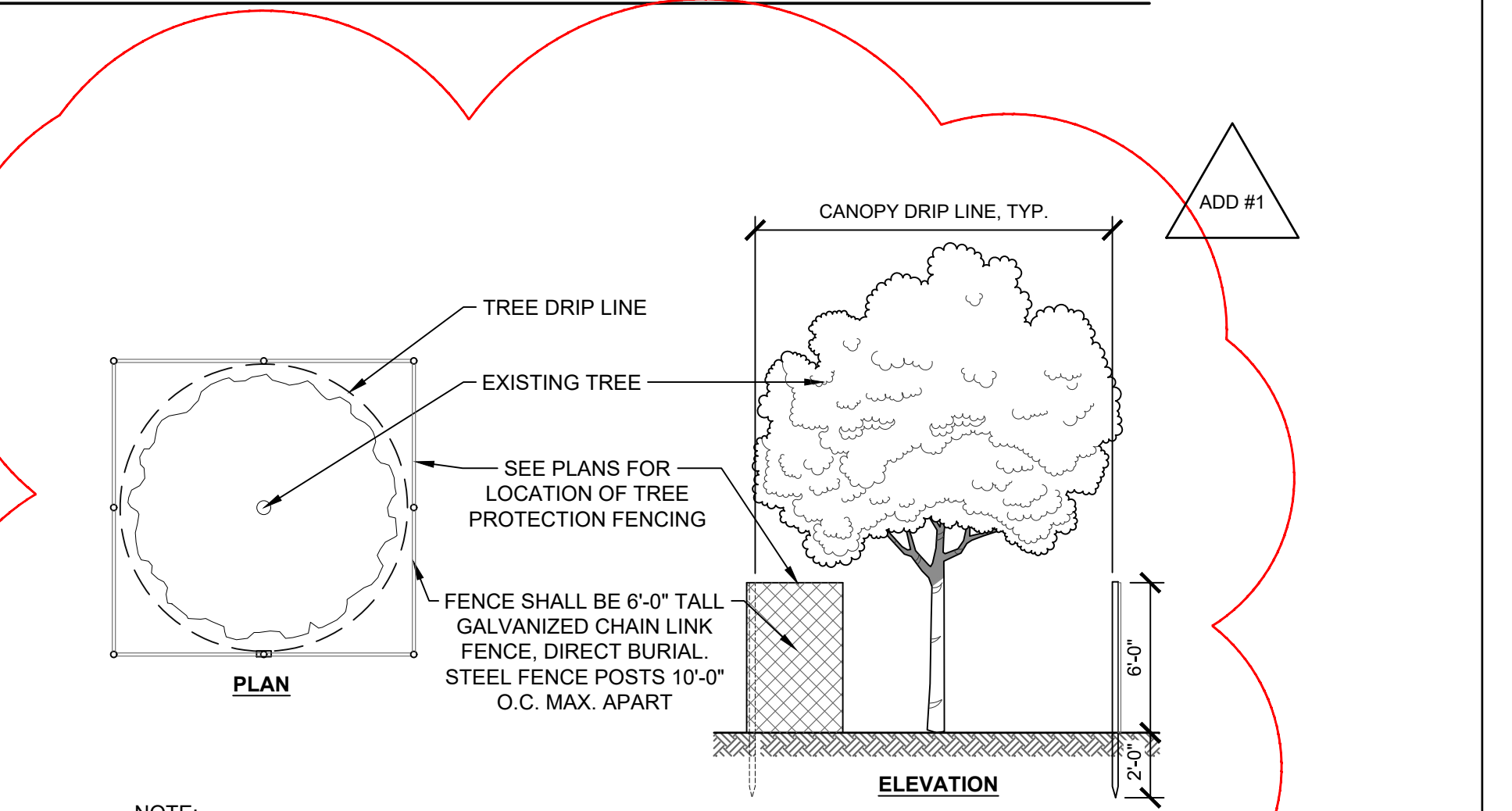
**SECTION A**



**SECTION B**

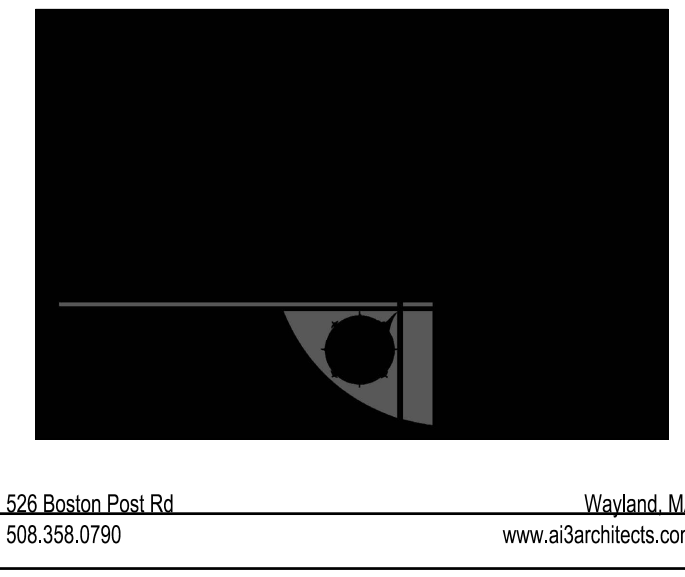
**DEMOLITION NOTES**

- ALL DEMOLITION SHALL BE COORDINATED WITH THE OWNER PRIOR TO START OF WORK.
- PAVEMENT DEMOLITION SHALL BE SAW CUT AND DISPOSED OF PROPERLY.
- UNDERGROUND UTILITIES WERE COMPILED FROM AVAILABLE RECORD PLANS OF UTILITY COMPANIES AND PUBLIC AGENCIES AND ARE APPROXIMATE AND ASSUMED. BEFORE COMMENCING SITE WORK IN ANY AREA, CONTACT "DIG SAFE" AT 1-888-DIG-SAFE AND ALL UTILITY COMPANIES NOT COVERED BY "DIG SAFE" TO ACCURATELY LOCATE UNDERGROUND UTILITIES. ANY DAMAGE TO EXISTING UTILITIES OR STRUCTURES AS SHOWN ON THE PLANS SHALL BE THE CONTRACTOR'S RESPONSIBILITY. COSTS OF SUCH DAMAGE SHALL BE THE CONTRACTOR'S RESPONSIBILITY. NO EXCAVATION SHALL BE DONE UNTIL UTILITY COMPANIES ARE PROPERLY NOTIFIED.
- THE CONTRACTOR SHALL COORDINATE ALL DEMOLITION OF STRUCTURES, PAVEMENT AND CONCRETE MATERIALS, AND UTILITIES WITH APPROPRIATE PROPOSED SITE GENERAL AND UTILITY DRAWINGS.
- THE CONTRACTOR SHALL REMOVE ALL UNSUITABLE SOILS TO THE LIMITS SATISFACTORY TO THE ENGINEER.



**CHAINLINK TREE PROTECTION AREA**

NOTE:  
 1. TYPICAL FOR ALL TREES NOTED 'TO BE PROTECTED' INSIDE WORK AREA  
 2. FENCE LOCATION TO BE APPROVED BY THE OWNER'S REPRESENTATIVE PRIOR TO CONSTRUCTION ACTIVITIES.  
 3. THE SOIL WITHIN THE FENCE SHALL NOT BE DISTURBED IN ANY MANNER DURING CONSTRUCTION. NO EQUIPMENT, MATERIALS, SUPPLIES, AND/OR SALVAGE SHALL BE STORED OR PLACED WITHIN THE ZONE. NO VEHICULAR OR EQUIPMENT TRAFFIC SHALL BE PERMITTED WITHIN THE FENCE. NO FILLING OR CURING OF EXISTING SOILS SHALL BE PERMITTED WITHIN THE FENCE. THE OWNER'S REPRESENTATIVE AND/OR LANDSCAPE SERVICES MUST APPROVE ANY DEVIATION FROM THE STANDARD.  
 4. REFER TO TEMPORARY TREE PROTECTION AND TRIMMING SPECIFICATION FOR MORE INFORMATION.



526 Boston Post Rd  
 508.358.0790  
 Weyland, MA  
 www.traverseia.com

**TRAVERSE**  
 landscape architects  
 150 Chestnut Street, 4th Floor  
 Providence, RI 02903  
 401-383-4950  
 www.traverseia.com



112 WASHINGTON ST  
 CENTRAL FALLS, RI 02863

KEYNOTE LEGEND:

KEY PLAN NORTH ARROW

DRAWING NAME:  
**HARDSCAPE DETAILS**

DRAWN BY: T J F  
 REVIEWED BY: A E  
 SCALE: AS SHOWN DRAWING NUMBER:  
 JOB NO.: K1033  
 DATE: June 7, 2022 **L3.01-R2**



940 DEXTER STREET  
CENTRAL FALLS, RI 02863

Copyright © 2022, Ai3 Architects, LLC

**KEYNOTE LEGEND:**  
 09 65 16.01 RESILIENT SHEET FLOORING - RSF-1  
 09 68 13.01 TILE CARPET - CPT-1  
 09 91 00.01 PAINT - SEE SCHEDULE  
 11 61 00.31 CURTAIN TRACK ASSEMBLY  
 11 61 00.32 STAGE CURTAIN  
 11 61 00.41 PIPE GRID - TV STUDIO

**REFLECTED CEILING PLAN LEGEND:**

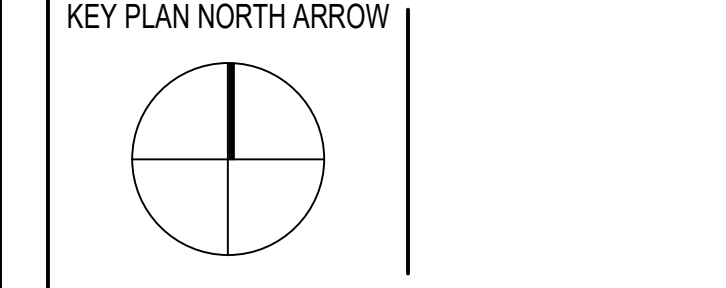
⊙	DAVILIGHT SENSOR - SEE ELEC.	⊙	OCCUPANCY SENSOR - SEE ELEC.
⊙	SPEAKER - SEE TECHNOLOGY	⊙	CAMERA - SEE TECHNOLOGY
⊙	ACCESS PANEL - SEE MECH	⊙	SPRINKLER HEAD - SEE FIRE PROTEC.
⊙	SUPPLY - SEE MECH	⊙	RETURN - SEE MECH
⊙	RADIANT PANEL - SEE MECH	⊙	VOICE SYSTEM - SEE TECHNOLOGY
⊙	LIGHTING FIXTURES - SEE ELECTRICAL	⊙	RING PENDENTS (HEIGHT AS NOTED)
⊙	DOWNLIGHTS	⊙	LINEAR PENDENT (HEIGHT AS NOTED)
⊙	RECESSED LINEAR LIGHTS	⊙	RECESSED LINEAR PENDENT (HEIGHT AS NOTED)
⊙	MATERIALS (ACT GRID SIZES VARY BY TYPE - REF. SPECIFICATIONS)	⊙	GWB SOFFIT
⊙	GWB SOFFIT	⊙	ACT

**GENERAL NOTES:**

- ALL CEILING MOUNTED ITEMS INCLUDING SPRINKLER HEADS, SMOKE DETECTORS, SPEAKERS, VIDEO, WIRELESS ACCESS POINTS AND RECESSED DOWN LIGHTS PLACED IN A 2'X2' CEILING TILE ARE TO BE ON CENTERLINE OF 2'-0" DIMENSION AND TO BE AT 1'-0" OFF EITHER END OR IN THE EXACT CENTER OF THE 4'-0" DIMENSION.
- ALL CEILING MOUNTED ITEMS INCLUDING SPRINKLER HEADS, SMOKE DETECTORS, SPEAKERS, VIDEO, WIRELESS ACCESS POINTS AND RECESSED DOWN LIGHTS PLACED IN A 2'X2' CEILING TILE TO BE CENTERED IN THE EXACT CENTER OF THE TILE.
- ALL SUPPLY GRILLES, RETURN REGISTERS, SPRINKLER HEADS, SMOKE DETECTORS, LIGHTS, SPEAKERS, VIDEO, WIRELESS ACCESS POINTS AND EXIT SIGNS TO BE LOCATED ON COORDINATION DRAWINGS. FINAL PLACEMENT TO BE APPROVED BY ARCHITECT.
- THE EXACT LOCATION OF LINEAR PENDENT LIGHT FIXTURES IN ALIGNMENT WITH TACK OR MARKER BOARDS SHOULD BE COORDINATED IN FIELD. SURROUNDING ACT TILES SHALL BE CUT ACCORDINGLY. GC TO COORDINATE.
- DIVISION 09216, 09213, 09212 AND 078100 REFER TO DRAWINGS 09 02, 09 03, AND 09 04 FOR ROOMS (AREAS) THAT ARE REQUIRED TO HAVE FIRE RATED CEILING/FLOOR AND WALL ASSEMBLIES.
- WHEN NOT INSTALLED IN WHITE ACT, CONCEALED SPRINKLER HEAD COVERS SHALL BE PAINTED TO MATCH CEILING CONDITION / COLOR, U.N.D.
- ACOUSTICAL CEILING-FILED SUB-CONTRACTOR IS TO THOROUGHLY COORDINATE EQUIPMENT, DEVICES, ACCESS PANELS, AND SPRINKLER HEADS NOTED ON THE FIRE PROTECTION DRAWINGS, ELECTRICAL DRAWINGS, MECHANICAL DRAWINGS, AND TECHNOLOGY DRAWINGS.

ADD-2 ADDENDUM #2 06.07.2022

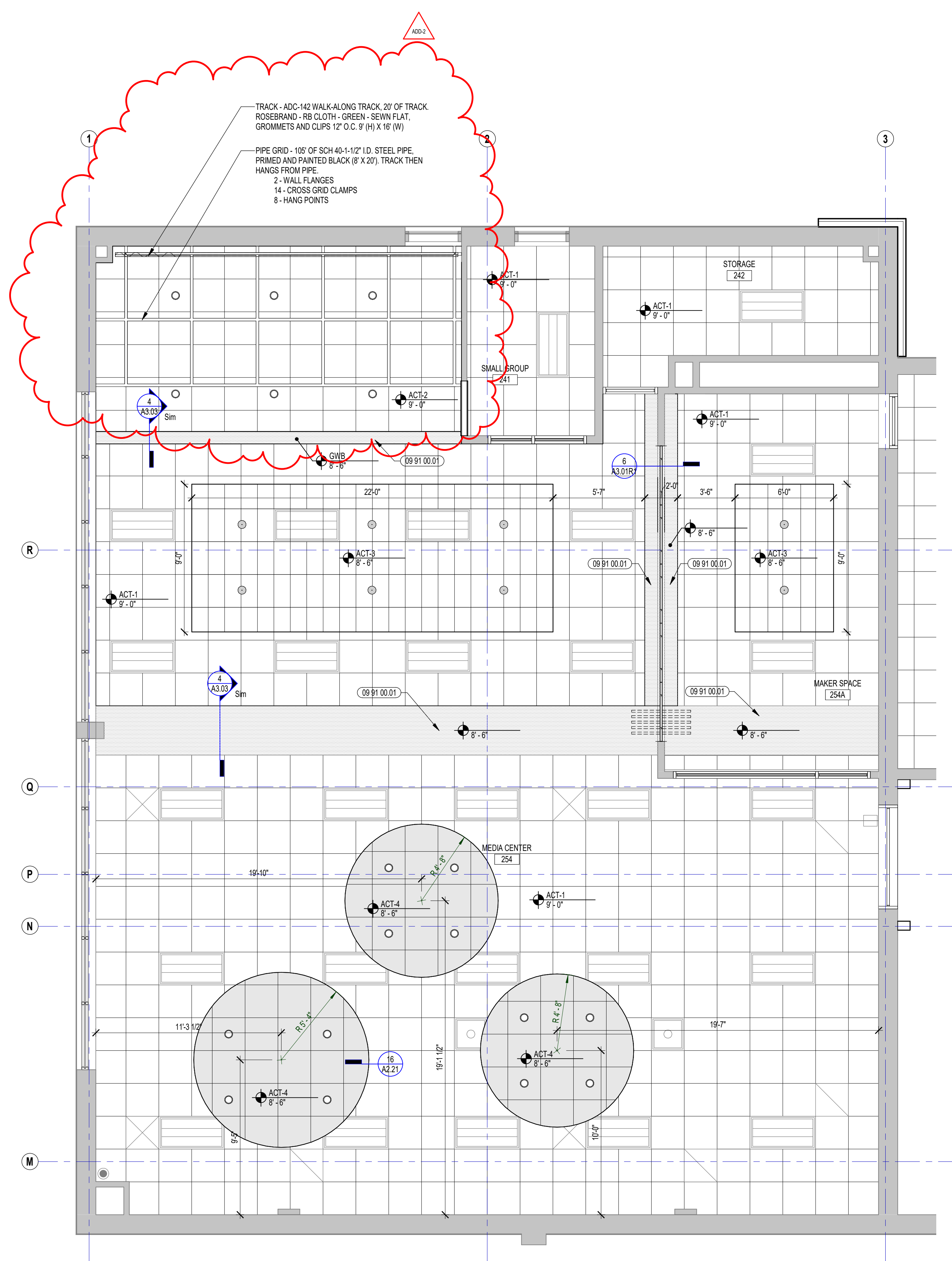
100% DOCUMENTS



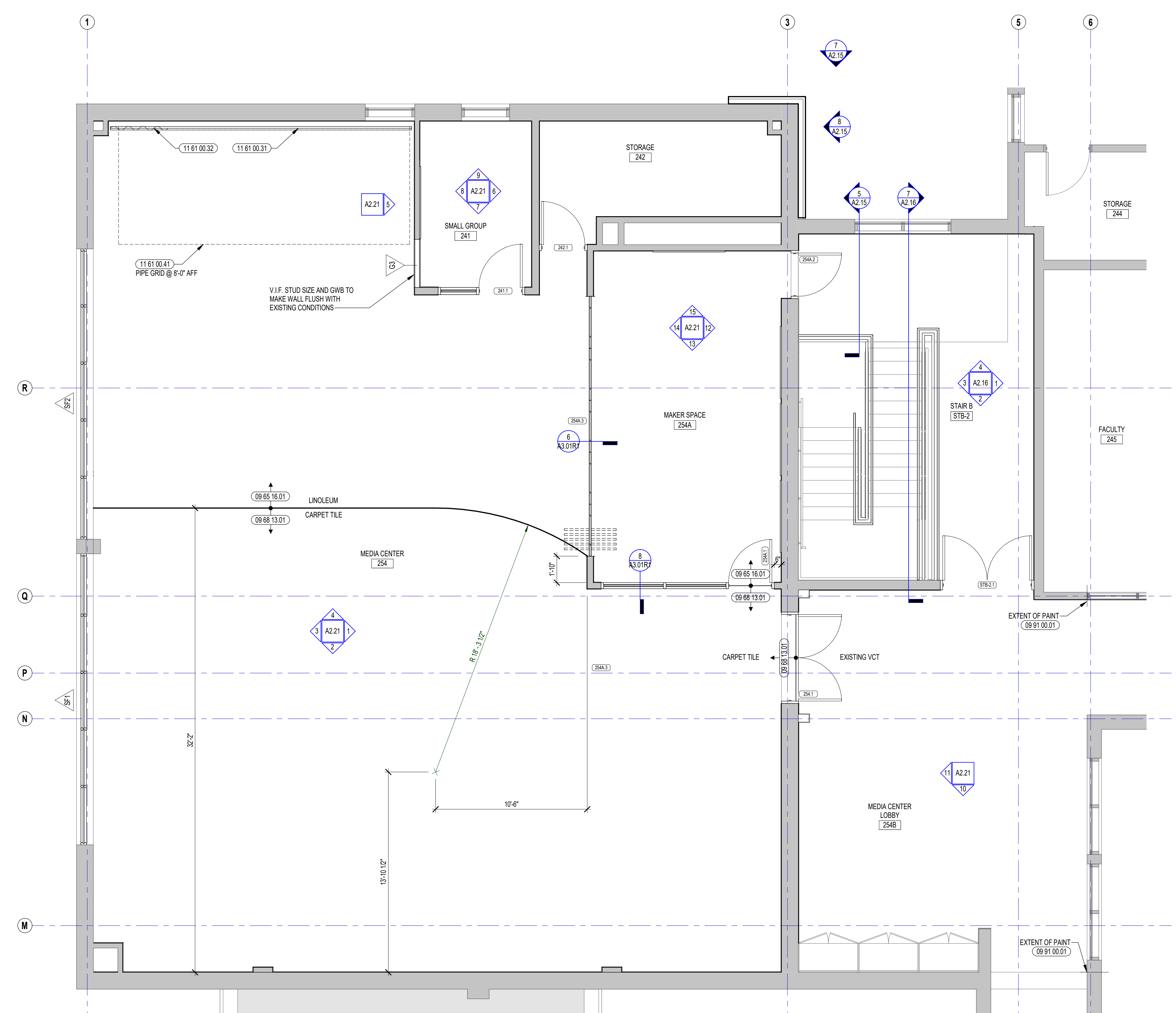
DRAWING NAME:  
**MEDIA CENTER ENLARGED PLAN AND RCP**

DRAWN BY: BFC  
 REVIEWED BY: KRK

SCALE: AS INDICATED | DRAWING NUMBER:  
 JOB NO.: 2202.00  
 DATE: MAY 20, 2022 **A2.20R1**



2 MEDIA CENTER REFLECTED CEILING PLAN  
1/4" = 1'-0"



1 MEDIA CENTER ENLARGED PLAN  
1/4" = 1'-0"