

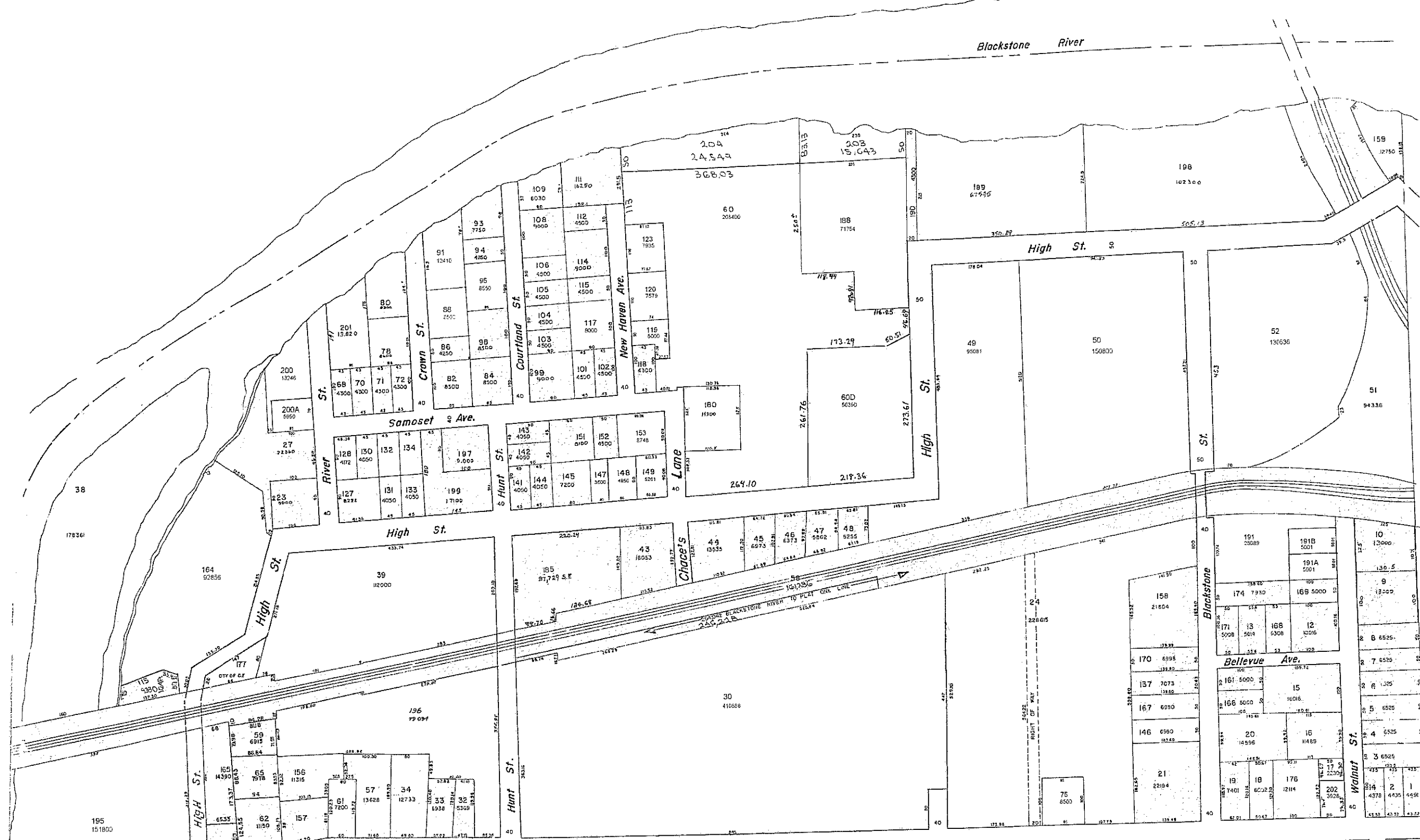
PLAT 5
PLAT NO 1

Revised by A. Hanson 2/25/2010
 REVISED BY A. HANSON 8/3/2007
 Revised By A. Harrako 01/20/00
 REVISED BY M. COOK O.P.E.D. 7/1/02

1" = 100'



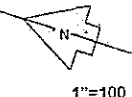
Blackstone River



PLAT 3

PLAT NO 2

PLAT 4



1"=100

Revised by A. Hanson 2/25/2010
 Revised by A. Hanson 8/2/2007
 Revised by T. Williams 2/64
 Revised by J. Berouty 7/14/66
 Revised by G. Blauk 2/88
 Revised by A. Harboke 2/2000
 Revised by M. Cook 01/21/09



Revised by WILLIAMS 2/04
 Revised by J. Serenity 7/14/16
 Revised by G. PLANK 2/2/18
 Revised by A. HANSON 2/25/2010
 Revised by M. COOK 1/04
 Revised by A. HANSON 8/3/2007
 Revised by A. HANSON 2/25/2010

PLAT 4
 1" = 100'
 PLAT NO 3

PLAT 2

Chace's

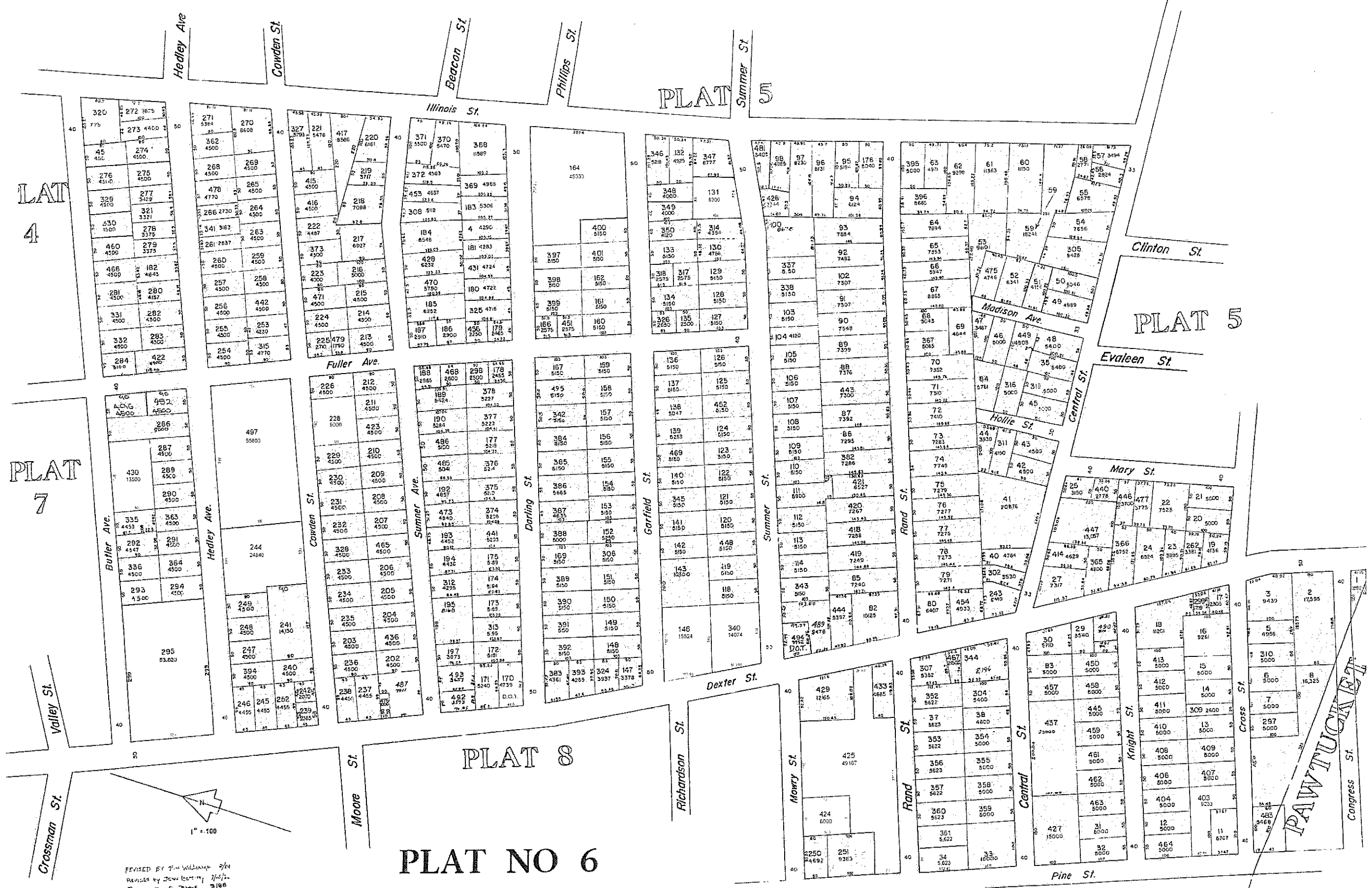


PLAT 1

PLAT 6

PLAT NO 5

REVISED BY T. WILLIAMS 2/89
 REVISED BY J. BOYBY 7/5/94
 REVISED BY G. BLACK 3/88
 REVISED BY A. HARRIS 2/2000
 REVISED BY M. COOK 1/04
 REVISED BY A. HANSON 8/3/2007
 REVISED BY A. HANSON 2/25/2010



PLAT 4

PLAT 5

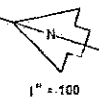
PLAT 5

PLAT 7

PLAT 8

PLAT NO 6

REVISED BY T.M. WILLIAMS 7/14
 REVISED BY JOHN BERRY 11/12
 REVISED BY G. DUNK 3/18
 REVISED BY A. HANSON 8/10
 REVISED BY M. COOK 1/04
 REVISED BY A. HANSON 8/8/2007
 REVISED BY A. HANSON 2/25/2010



PAWTUCKET



PLAT 4

PLAT 9

PLAT 8

PLAT 10

PLAT NO 7

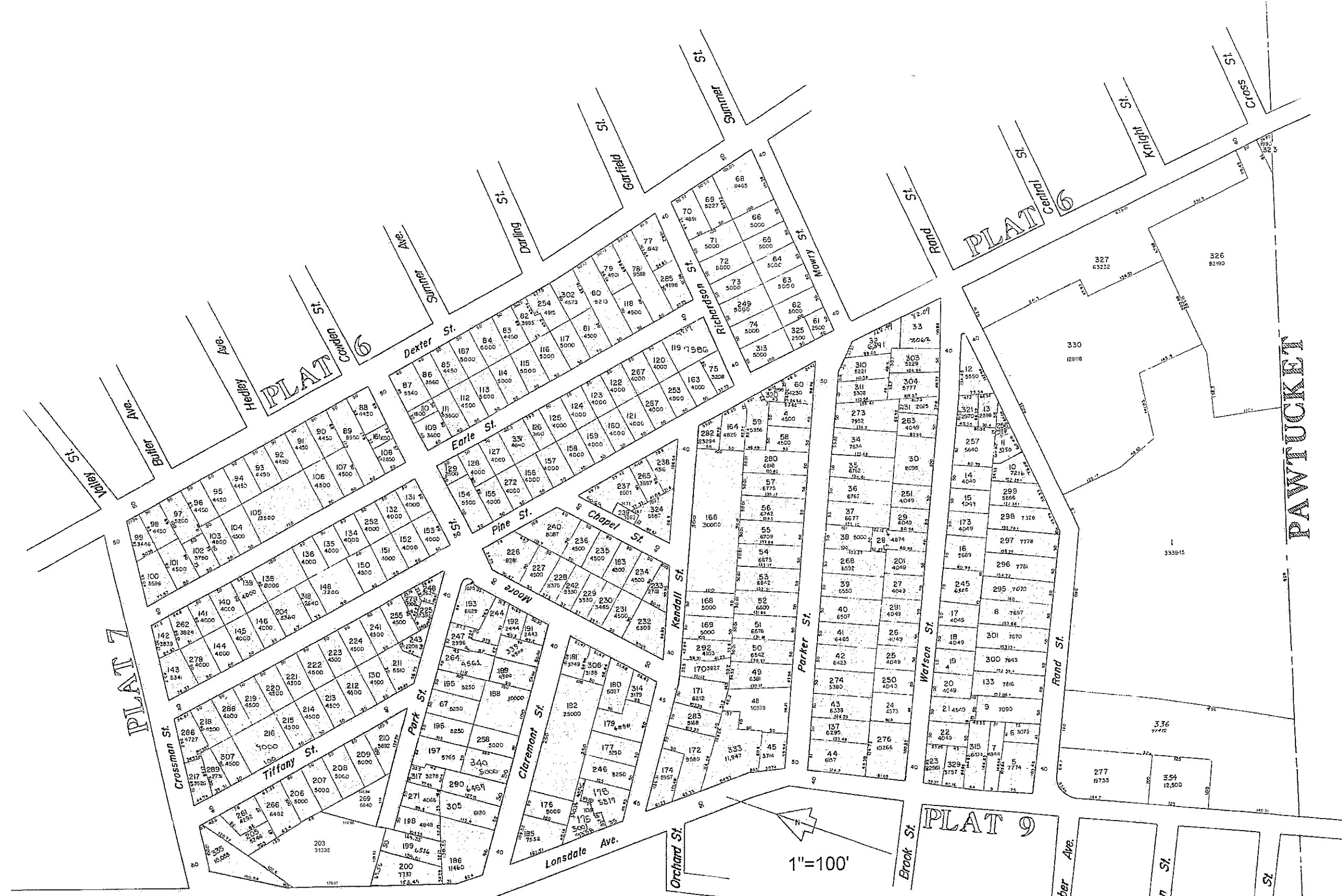
PLAT 9

REVISED BY TOM WILLIAMS 2/04
 FOR SA BY SEAN BERRY 7/10/04
 REVISED BY G. BLOK 2/88
 REVISED BY HARRIS KA 2/2000
 REVISED BY M. COOK 1/04
 REVISED BY A. HANSON 10/2009
 REVISED BY A. HANSON 2/25/2010

1"=100'

Valley Falls Pond





PLAT 9

PLAT NO 8

PLAT 9

PLAT 6

PLAT 6

PLAT 7

REVISED BY TWILLIAMS 3/11
 Revised by J. Liberty 7/15/26
 Revised by G. Block 3/88
 Revised by A. Harruka 2/2000
 REVISED BY M. COOK 1/04
 REVISED BY A. HANSON 8/3/2007
 Revised by A. Hanson 2/25/2010

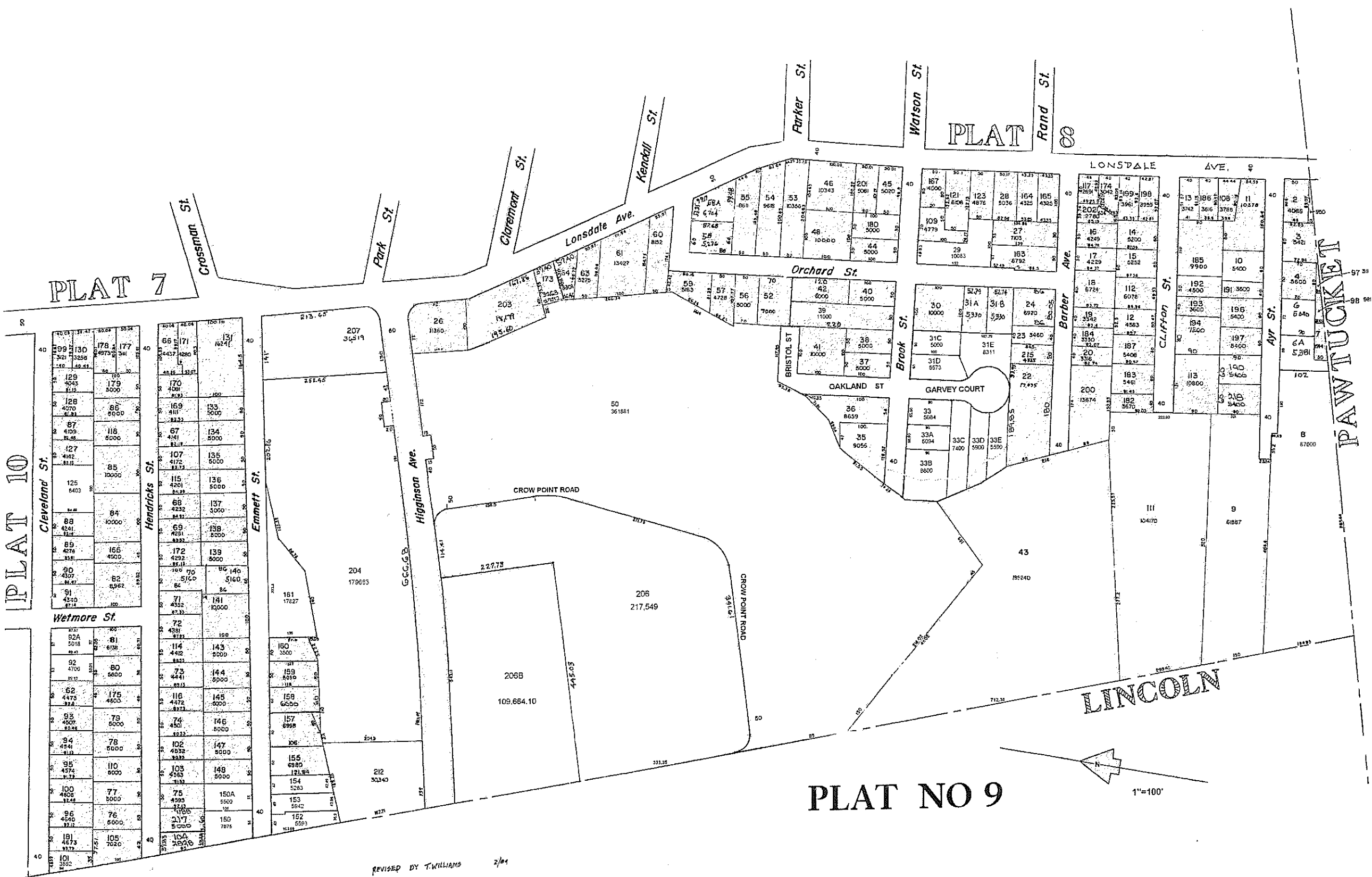
PAWTUCKET

PLAT 7

PLAT 8

PLAT NO 9

PAWTUCKET



REVISED BY T. WILLIAMS 2/04
 Revised by J. Berouty 7/15/16
 Revised by G. Black 5/19/20
 Revised by A. HARRARA 2/10/20
 REVISED BY M. COOK 1/2021
 REVISED BY A. HANSON 8/13/2021
 Revised by A. Hanson 2/25/2010

PLAT 7

Dexter St

Prime St

West Hunt St

Lonsdale Ave.

Moshassuck Cemetery

49

994938

PLAT 9

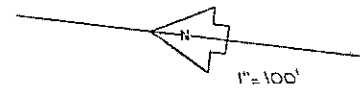
Welmore St

Bagley St

Cleveland St

PLAT NO 10

LINCOLN



Revised by J. Williams 2/04
 Revised by J. Deady 7/15/06
 Revised by G. Black 3/08
 Revised by A. Hansen 2/2000
 Revised by M. Cook 1/04
 Revised by A. Hansen 8/3/2007
 Revised by A. Hansen 2/25/2010

