



Calcutt FEI Bid Package #1 | Toilet Rooms

100% Bid Documents

Central Falls, RI

Ai3 Project # - 2202.04

Addendum #2

July 10, 2023

The attention of Bidders submitting proposals for Calcutt FEI Bid Package # 100% Bid Documents is called to the following changes to the Bidding Contract Documents dated June 22, 2023 as prepared by Ai3 Architects, LLC. The items set forth therein below, whether of revision, omission, addition, substitution or clarification are all to be included as changes to Information to Bidders, the Conditions of the Contract, Specifications and Drawings of the Contract.

The number of this Addendum (Number 2) must be entered in the appropriate spaces provided on the Bid Form.

ATTACHMENTS:

Demolition Drawings:

ADD 2-001 Demolition Drawings: remove drawing DA1.21B1 in its entirety and replace with drawing DA1.21B1.

Architectural Drawings:

ADD 2-002 Architectural Drawings: remove drawing A8.10 in its entirety and replace with drawing A8.10.

Plumbing Drawings:

ADD 2-003 Plumbing Drawings: remove drawings P1.01B1, P3.01B1, and P3.02B1 in their entirety and replace with drawings P1.01B1, P3.01B1, and P3.02B1.

Calcutt FEI Bid Package #1 | Toilet Rooms

100% BID DOCUMENTS CENTRAL

FALLS, RI ADD #2 – PAGE 1

Specifications:

- ADD 2-004 REMOVE Document 00 01 10 "Table of Contents" in entirety and REPLACE with new Document 00 01 10, dated July 10, 2023, Addendum #2.
- ADD 2-005 ADD Specification Section 06 61 16 "Solid Surfacing Fabrications" dated July 10, 2023, Addendum #2, bound herewith and part of this Addendum.
- ADD 2-006 Section 10 28 13 "Toilet Accessories", Article 2.2; DELETE Paragraph B in its entirety and REPLACE it with the following:
- B. Electric dryer, non-heated, filtered, low-profile, surface-mounted hand dryer with no-touch infrared-sensor operation. Automatic shut-off after 30 seconds of non-use.
 - 1. Characteristics:
 - a. Electrical requirements, 115 volt AC, 12 amp, 60hz, 1400 watts.
 - b. Filter: HEPA 99.9 percent bacteria removal.
 - 2. Acceptable models:
 - a. Basis of Design: Dyson US, Chicago IL., product: "Airblade V"., model MK2 with "nickel" finish.
 - b. Saniflow Hand Dryer Corporation, Miami, FL., product "Machflow Plus", model M09ACS-UL-ION, with "stainless steel satin" finish.
 - c. Veltia USA, Coral Gables, FL, product "V-Fashion", with "aluminum matte" finish.
 - d. World Dryer, Bensenville, IL, product "Verdedri" with, "stainless steel, brushed" finish.

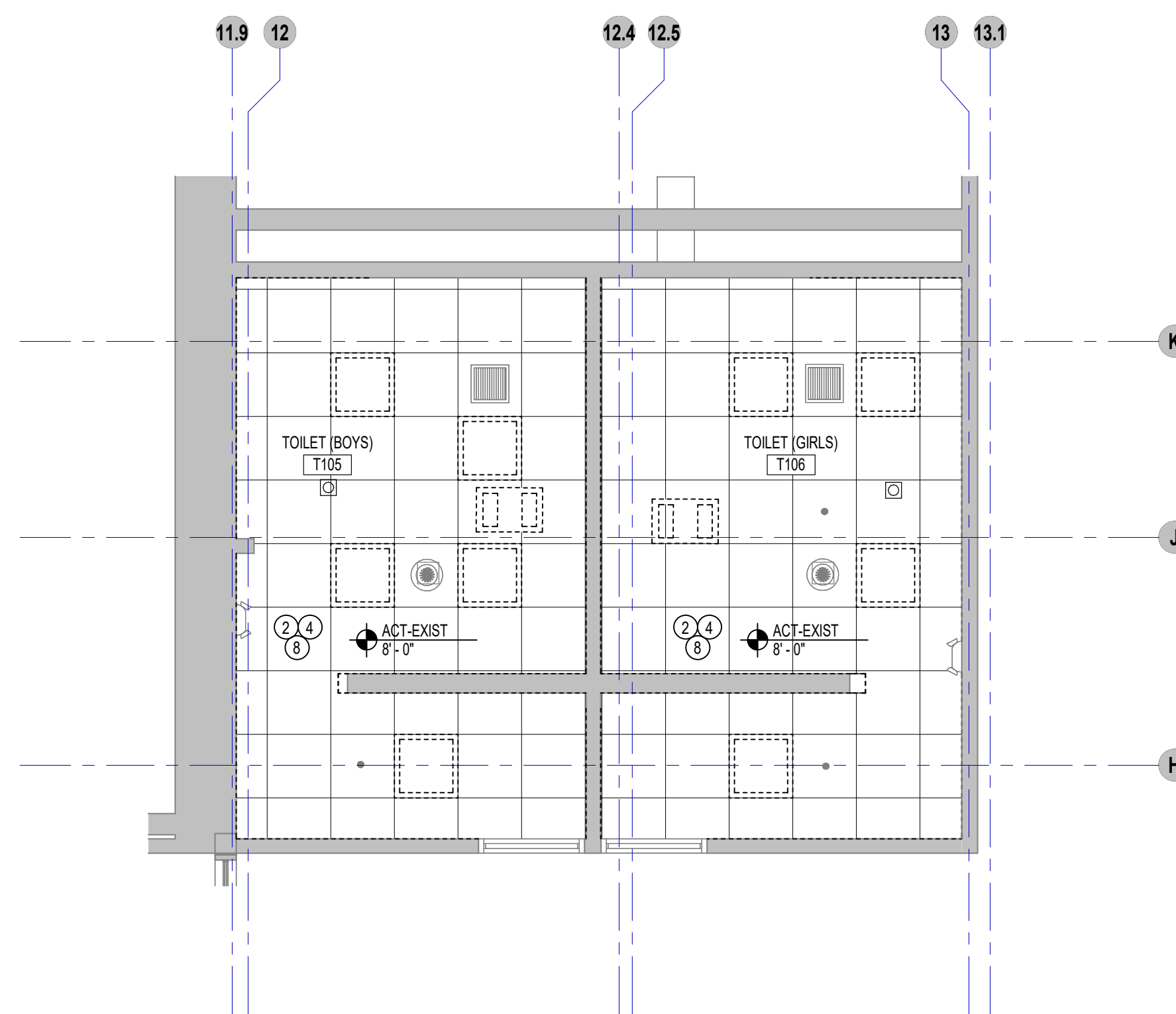
END OF ADDENDUM #2

Calcutt FEI Bid Package #1 | Toilet Rooms

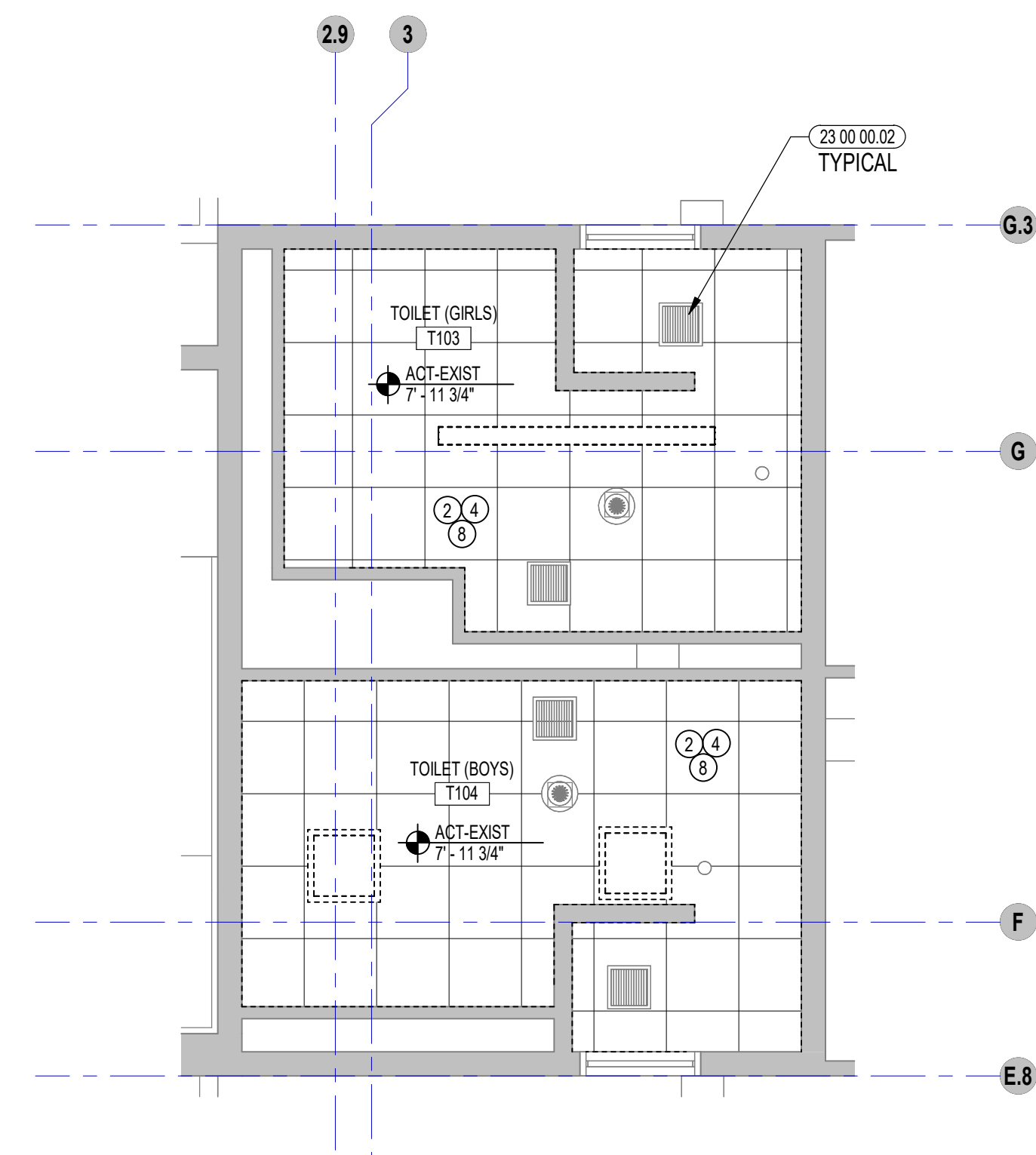
100% BID DOCUMENTS CENTRAL

FALLS, RI ADD #2 – PAGE 2

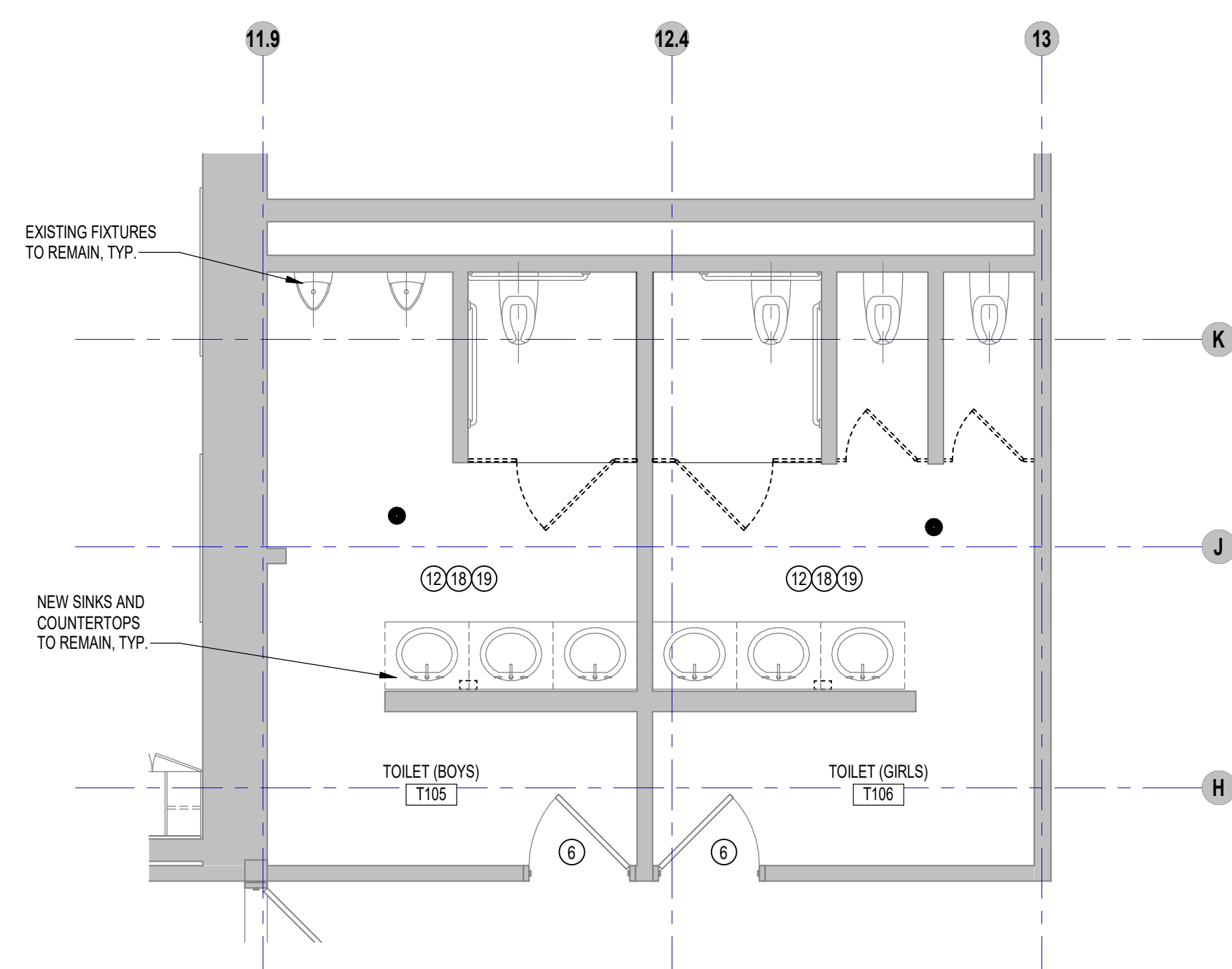
#	DEMOLITION TEXT
1	REMOVE EXISTING FLOORING.
2	REMOVE EXISTING CEILING.
3	REMOVE ALL EXISTING PARTITIONS, PLUMBING FIXTURES, AND CASEWORK AS INDICATED.
4	REMOVE ALL CEILING GRIDS AND TILES IN LOCATIONS NOTED ON PLANS AND COORDINATED WITH THE ROOM FINISH SCHEDULE.
5	REMOVE WINDOW UNIT AND ALL ASSOCIATED WOOD BLOCKING, WINDOW TREATMENTS, INTERIOR WOOD TRIM AND APRON AS REQUIRED FOR INSTALLATION OF NEW WORK.
6	REMOVE EXISTING DOOR HARDWARE INCLUDING TRANSOM PANEL, WHERE OCCURS. PREPARE EXISTING DOOR FRAME AS REQUIRED TO RECEIVE SCHEDULED FINISH, DOOR AND HARDWARE. REFER TO DOOR SCHEDULE FOR ADDITIONAL INFORMATION.
7	REMOVE EXISTING DOOR(S), FRAME(S), INCLUDING TRANSOM PANEL(S) AND SIDELITES, BLOCKING, TRIM AND THRESHOLDS.
8	REMOVE CEILING MOUNTED DEVICES + LIGHT FIXTURES, AND STORE FOR REUSE. REFER TO ELECTRICAL DRAWINGS FOR ADDITIONAL INFORMATION.
9	REMOVE EXISTING CASEWORK, BUILT-IN SHELVING, LOOSE SHELVING, WARDROBES, BASE AND UPPER CABINETS, AND COUNTERTOPS.
10	REMOVE EXISTING PLUMBING FIXTURE(S) AND LINES BACK TO A POINT WHICH WOULD NOT INTERFERE WITH NEW WORK.
11	REMOVE EXISTING GYM EQUIPMENT INCLUDING BUT NOT LIMITED TO PULL UP BARS, CURTAIN + TRACK, WALL PADS + FASTENERS, BLEACHERS, ROPES, PATCH + PREPARE SURFACE FOR NEW FINISH.
12	REMOVE EXISTING WALL MOUNTED PARTITIONS AND ACCESSORIES. PROVIDE BLOCKING AND FLOORING AT RECESSES TO ALIGN WITH EXISTING WALL FINISH TO RECEIVE NEW.
13	REMOVE ALL WALL MOUNTED ITEMS, RESTORE FOR REUSE, AND PREPARE SURFACE FOR NEW FINISH.
14	REMOVE EXISTING TECTUM WALL PANELS. PATCH + PREPARE SURFACE FOR NEW FINISH.
15	REMOVE DOOR, FRAME + HARDWARE IN ITS ENTIRETY.
16	REMOVE DOOR + HARDWARE + PREPARE FRAME FOR NEW DOOR + HARDWARE.
17	REMOVE HARDWARE + PREPARE DOOR + FRAME FOR NEW HARDWARE.
18	PREPARE EXISTING FLOOR FOR INSTALLATION OF NEW POURED EPOXY FLOOR. SEE ARCHITECTURAL DRAWINGS FOR MORE INFORMATION.
19	REMOVE + DISPOSE OF ALL WALL MOUNTED ITEMS NOT SCHEDULED TO REMAIN + PREPARE FOR NEW FINISH MATERIAL. SEE ARCHITECTURAL DRAWINGS FOR MORE INFORMATION.
20	REMOVE + DISPOSE OF EXISTING ACoustICAL CEILING TILES. ALL ITEMS ASSOCIATED WITH EXISTING SUSPENSION SYSTEM ARE TO REMAIN. REFER TO ARCHITECTURAL, MECHANICAL, ELECTRICAL, PLUMBING DRAWINGS FOR MORE INFORMATION.
21	REMOVE + DISPOSE OF ALL FINISHED CEILING MATERIALS NOT SCHEDULED TO REMAIN, INCLUDING GWB, AND ALL ITEMS ASSOCIATED WITH CEILING SUSPENSION SYSTEM, ACoustICAL TILES, ETC. REFER TO ARCHITECTURAL, MECHANICAL, ELECTRICAL, PLUMBING DRAWINGS FOR MORE INFORMATION. LEAVE EXPOSED STRUCTURE ABOVE CLEAN + FREE OF ALL ITEMS SCHEDULED FOR DEMOLITION FOR INSTALLATION OF NEW WORK.



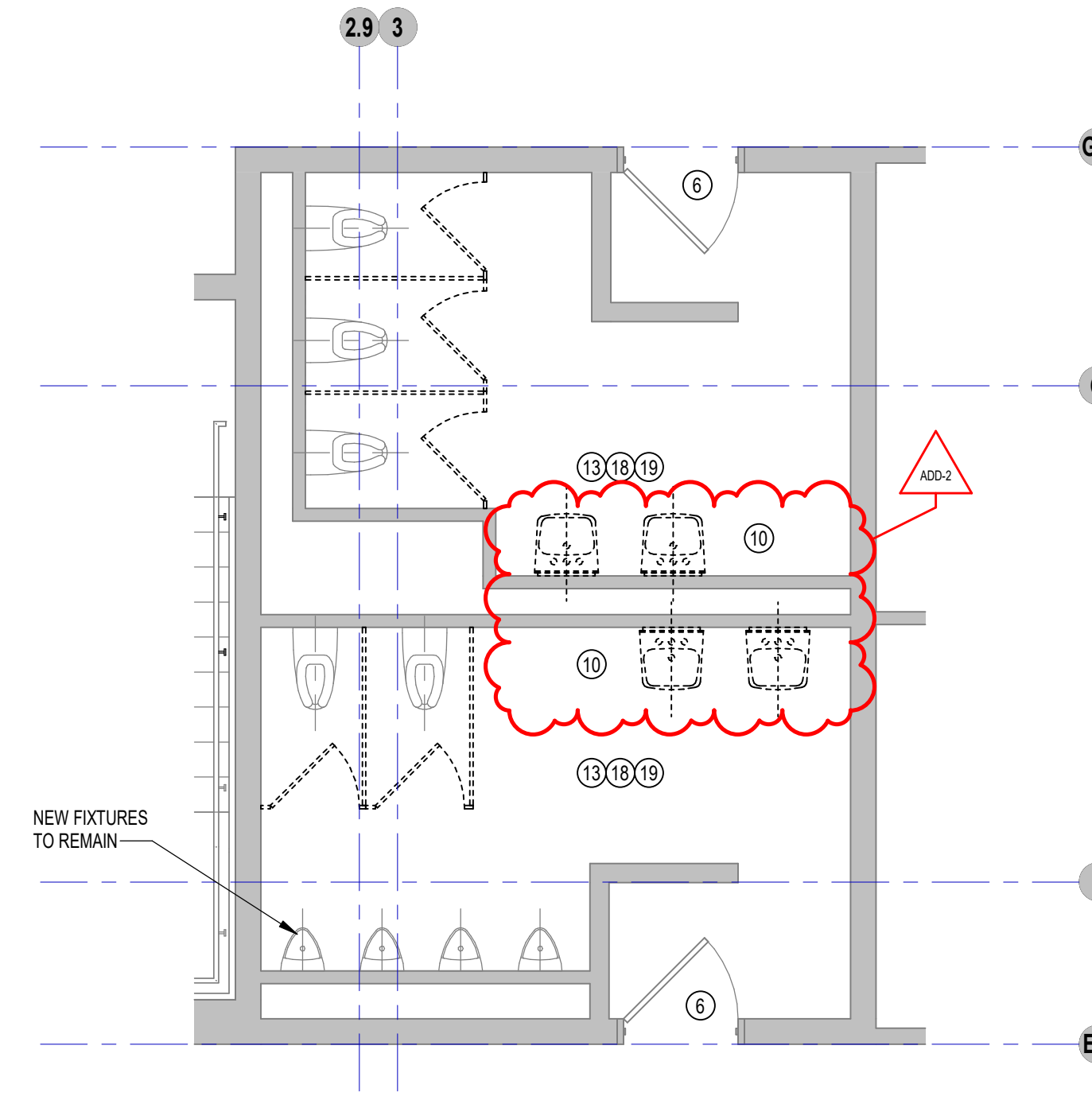
4 TYPICAL ENLARGED TOILET ROOM DEMO RCP
1/4" = 1'-0"



3 TYPICAL ENLARGED TOILET ROOM DEMO RCP
1/4" = 1'-0"



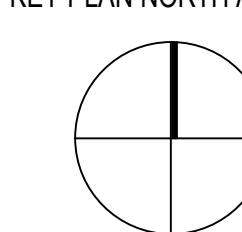
2 TYPICAL ENLARGED TOILET ROOM DEMO PLAN
1/4" = 1'-0"



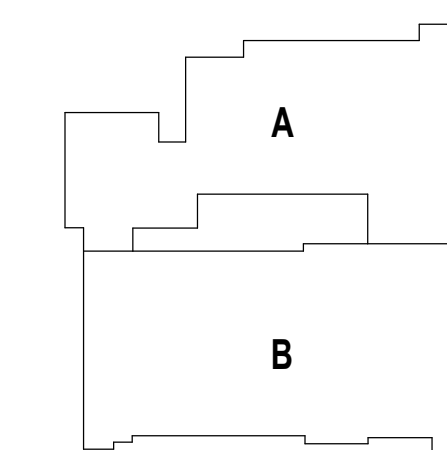
1 TYPICAL ENLARGED TOILET ROOM DEMO PLAN
1/4" = 1'-0"

ADDENDUM #2 ADD-2 7.10.2023
BID PACKAGE #2

KEY PLAN NORTH ARROW



KEYPLAN



DRAWING NAME:

TOILET ROOMS
ENLARGED DEMOLITION
PLANS & RCPs

DRAWN BY: MS / NS

REVIEWED BY: JQ

SCALE: AS INDICATED DRAWING NUMBER:
JOB NO.: 2202.04
DATE: June 22, 2023 DA1.21 B1

TOILET ACCESSORY SCHEDULE - GENERAL NOTES

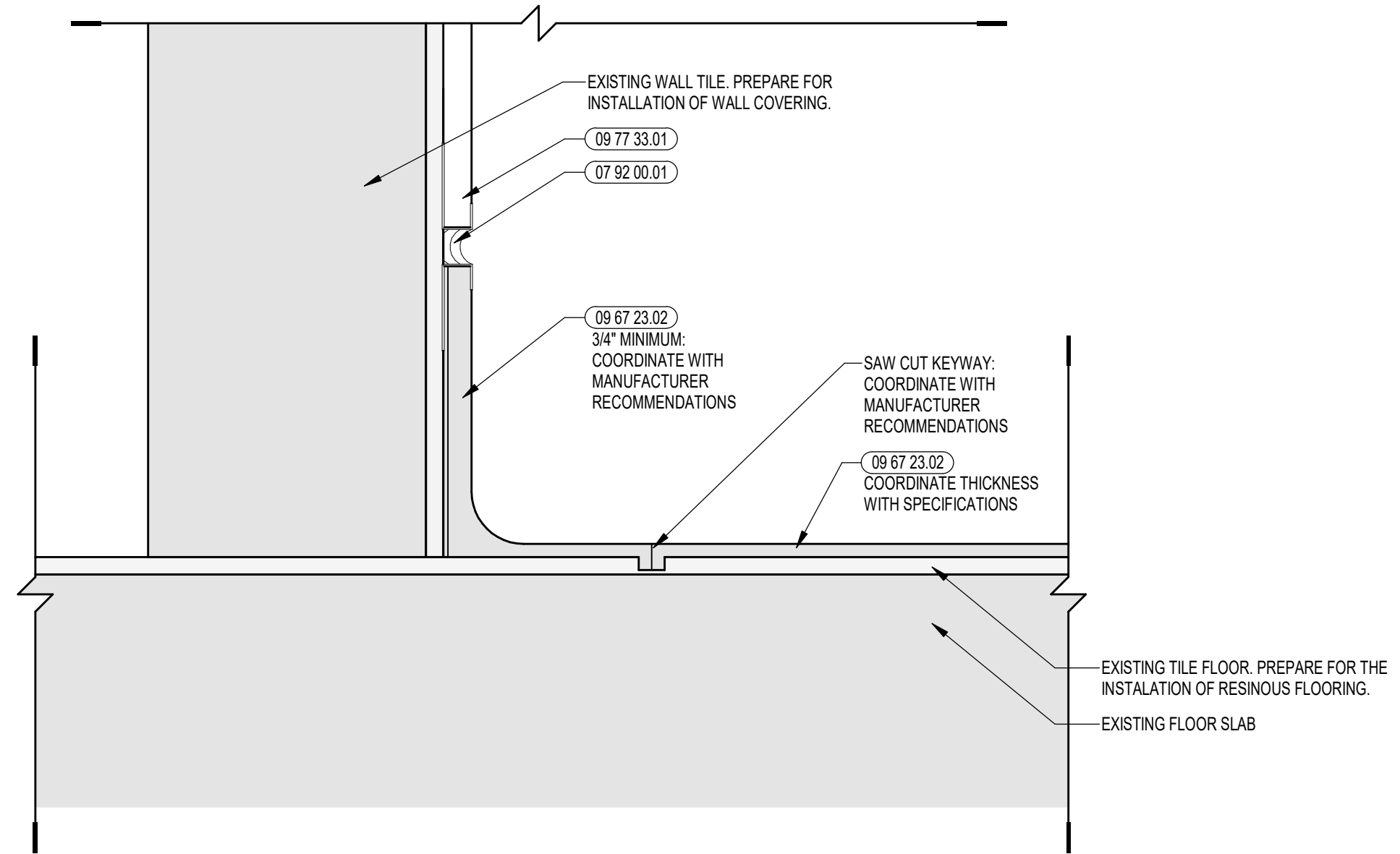
DESCRIPTION	NOTES
SOAP DISPENSERS AND PAPER TOWEL DISPENSERS	ALL SOAP AND PAPER DISPENSERS SHALL BE FURNISHED AND INSTALLED BY OWNER.
TOILET TISSUE DISPENSERS AND SANITARY NAPKIN DISPOSALS	COORDINATE EXACT MOUNTING HEIGHT OF GRAB BARS WITH ARCHITECT. IN FIELD. NOTE: TOILET TISSUE DISPENSERS SHALL BE 15" A.F.F., WITH TOP OF DISPENSER 1 1/2" MIN. BELOW THE SIDE GRAB BAR AND 7" TO 9" FROM THE FRONT EDGE OF THE TOILET TO THE CENTERLINE OF THE DISPENSER.
GRAB BARS	PROVIDE 1 1/2" CLEARANCE FROM WALL WITH CONCEALED MOUNTING.
COAT HOOK	PROVIDE ONE AT EACH TOILET ROOM PARTITION STALL DOOR MOUNTED TO STALL SIDE OF DOOR.
PLUMBING FIXTURES	SEE PLUMBING DRAWINGS FOR PLUMBING FIXTURE LOCATION VERIFICATIONS.
SURFACE MOUNTED TOILET ACCESSORIES	ALL SURFACE MOUNTED TOILET ACCESSORIES SHALL BE FURNISHED AND INSTALLED BY OWNER.

FIXTURE LEGEND

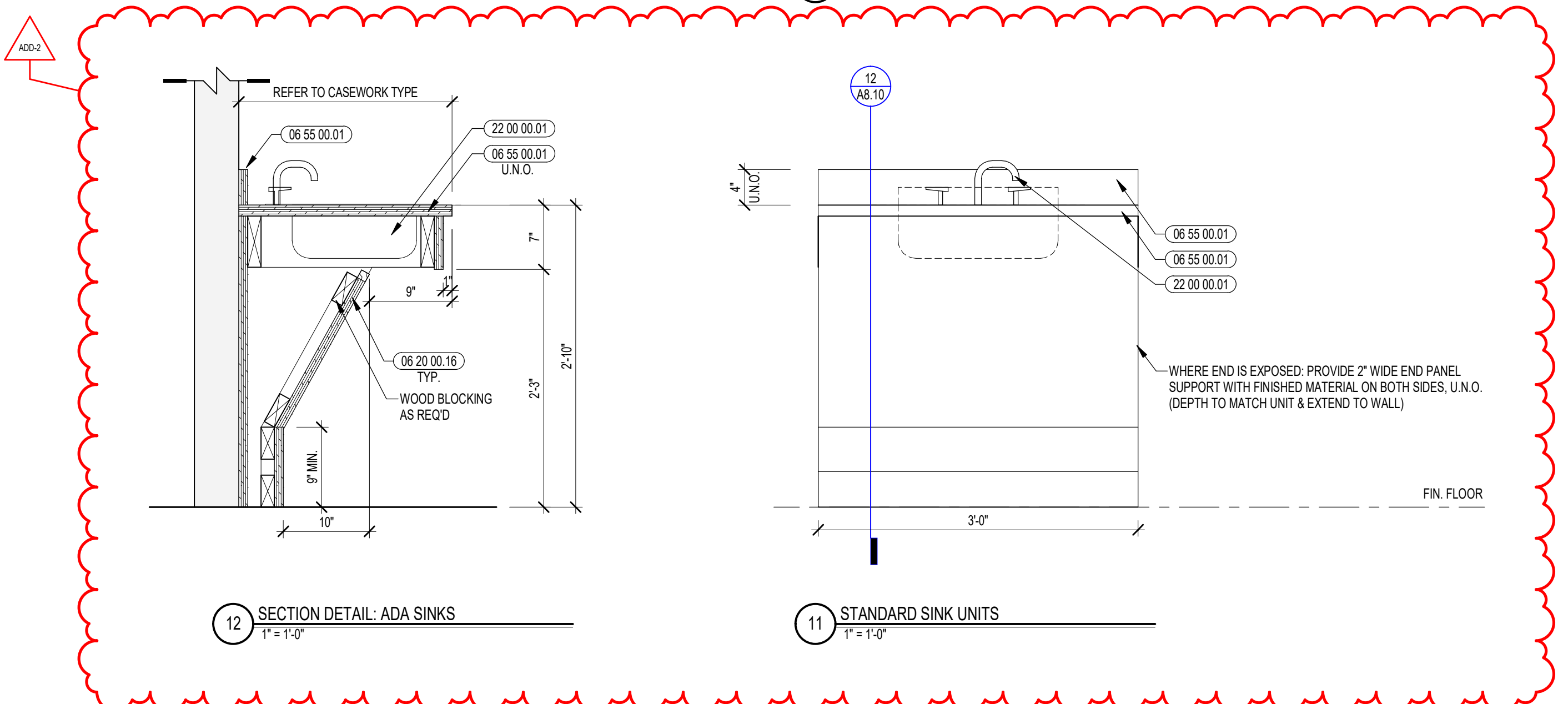
- (WC) WATER CLOSET - ADULT
- (WCA) WATER CLOSET - ADULT ACCESSIBLE
- (WCC) WATER CLOSET - CHILD ACCESSIBLE
- (UR) URINAL - ADULT
- (URA) URINAL - ADULT ACCESSIBLE
- (URC) URINAL - CHILD ACCESSIBLE
- (LAV) LAVATORY - ADULT
- (LAVA) LAVATORY - ADULT ACCESSIBLE
- (LAVC) LAVATORY - CHILD ACCESSIBLE
- (SHRA) SHOWER - ACCESSIBLE
- (SS) SERVICE SINK
- (FD) FLOOR DRAIN
- (HB) HOSE BIB

TOILET ACCESSORY LEGEND: SEE SPEC SECTION 10 28 13

- | | |
|--|--|
| (G1) STAINLESS STEEL GRAB BAR (REAR WALL) | (HD) HAND DRYER |
| (G2) STAINLESS STEEL GRAB BAR (SIDE WALL) | (HDIC) HAND DRYER - CHILD |
| (GC1) STAINLESS STEEL GRAB BAR - CHILD (REAR WALL) | (TT) TOILET TISSUE DISPENSER |
| (GC2) STAINLESS STEEL GRAB BAR - CHILD (SIDE WALL) | (TTC) TOILET TISSUE DISPENSER - CHILD |
| (GS1) STAINLESS STEEL GRAB BAR - 2'-6" X 5' HC SHOWER STALL (WALL ADJ. SEAT) | (CH) STAINLESS STEEL COAT HOOK |
| (GS2) STAINLESS STEEL GRAB BAR - 2'-6" X 5' HC SHOWER STALL (BACK WALL) | (SNT) SANITARY NAPKIN DISPOSAL (TYPE 1 - SURFACE MOUNTED) |
| (M) STAINLESS STEEL FRAMED MIRROR - CHILD | (SN2) SANITARY NAPKIN DISPOSAL (TYPE 2 - PARTITION MOUNTED DUAL ACCESS) |
| (MC) STAINLESS STEEL FRAMED MIRROR - CHILD | (MH) MOP HOLDER |
| (SD) SOAP DISPENSER | (SH) STAINLESS STEEL SHELF (COORDINATE MOUNTING HEIGHT & LOCATION IN FIELD, MIN 5'-0" AFF; MAX 5'-6" A.F.F.) |
| (SDC) SOAP DISPENSER - CHILD | (PS) PADDED SEAT |
| (PT) SURFACE MOUNTED PAPER TOWEL DISPENSER | (SCR) SHOWER CURTAIN AND ROD (COORDINATE MOUNTING HEIGHT WITH SHOWER CURTAIN LENGTH) |
| (PTC) SURFACE MOUNTED PAPER TOWEL DISPENSER - CHILD | |

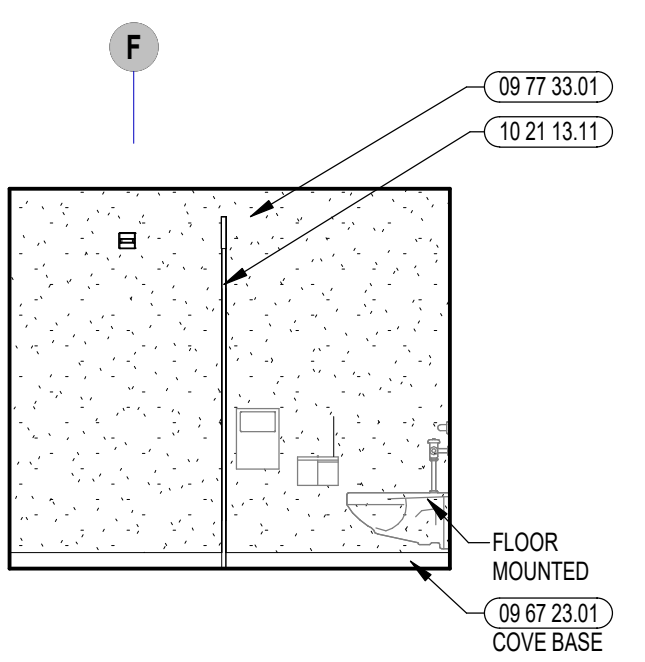


13 RESINOUS FLOORING RADIUS COVE BASE DETAIL
8" = 1'-0"

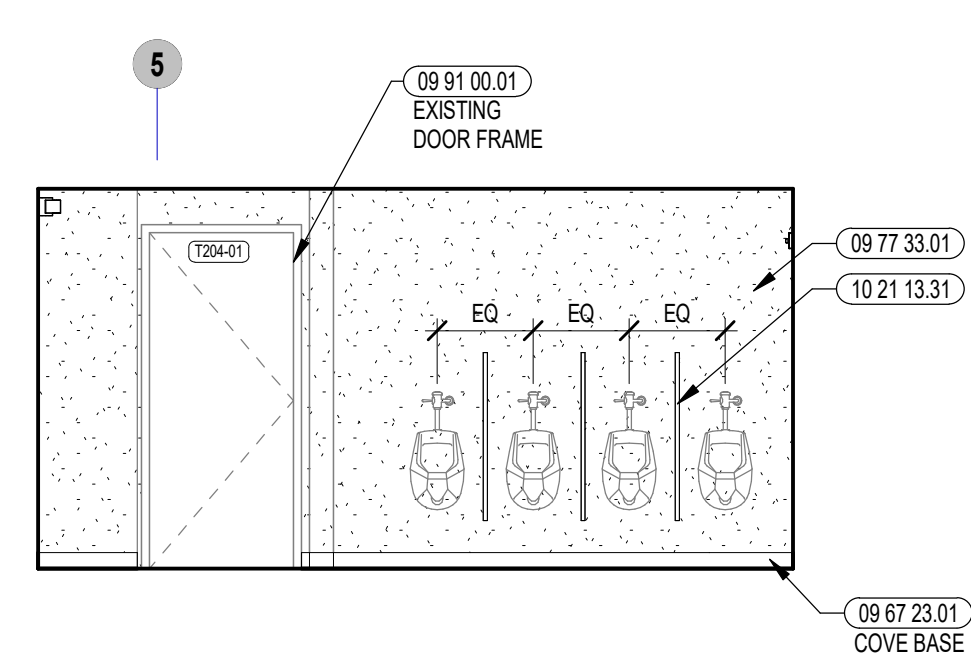


12 SECTION DETAIL - ADA SINKS
1" = 1'-0"

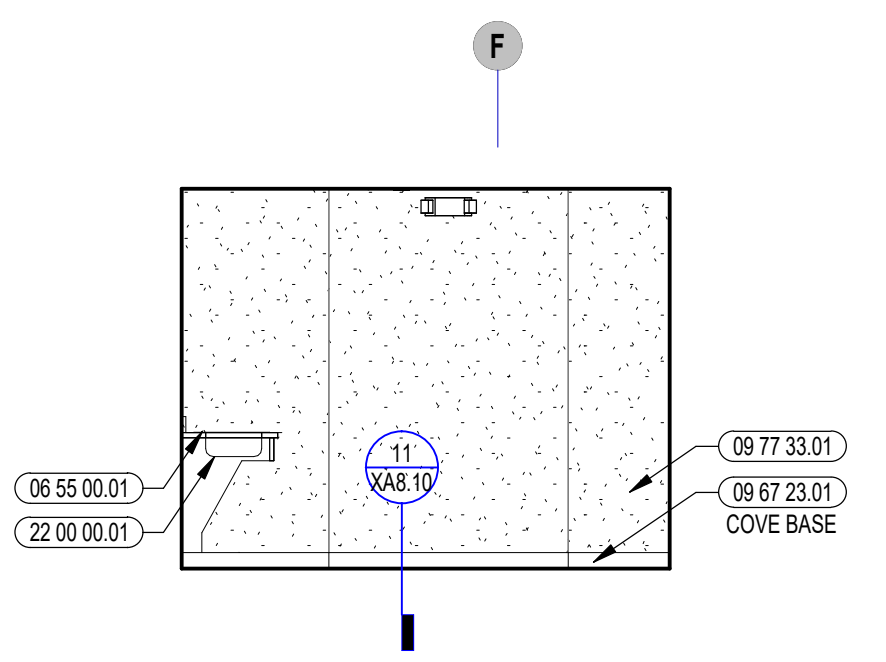
11 STANDARD SINK UNITS
1" = 1'-0"



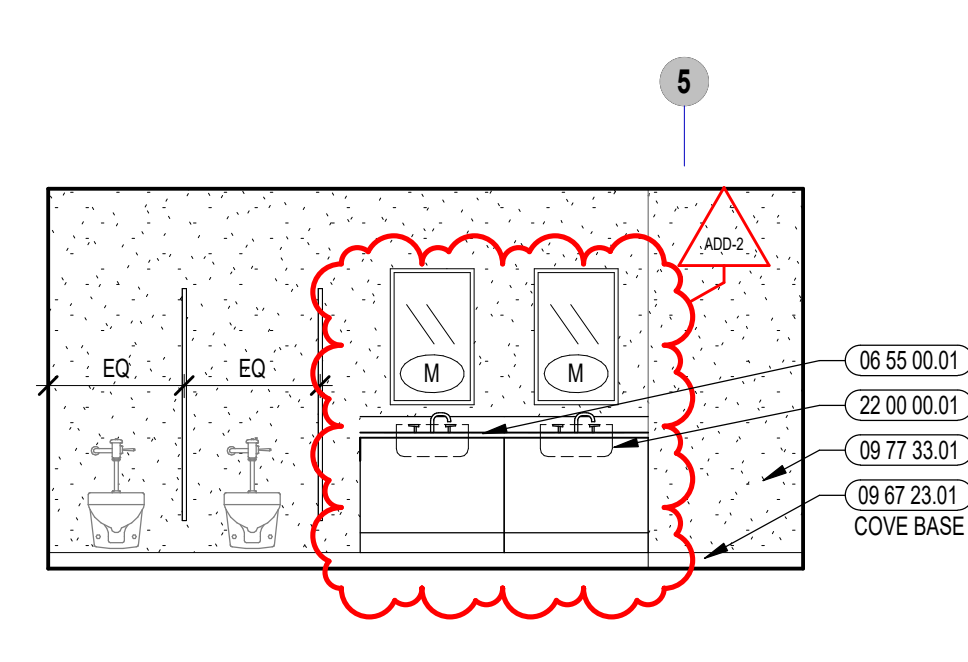
10 TOILET ROOM INTERIOR ELEVATION
1/4" = 1'-0"



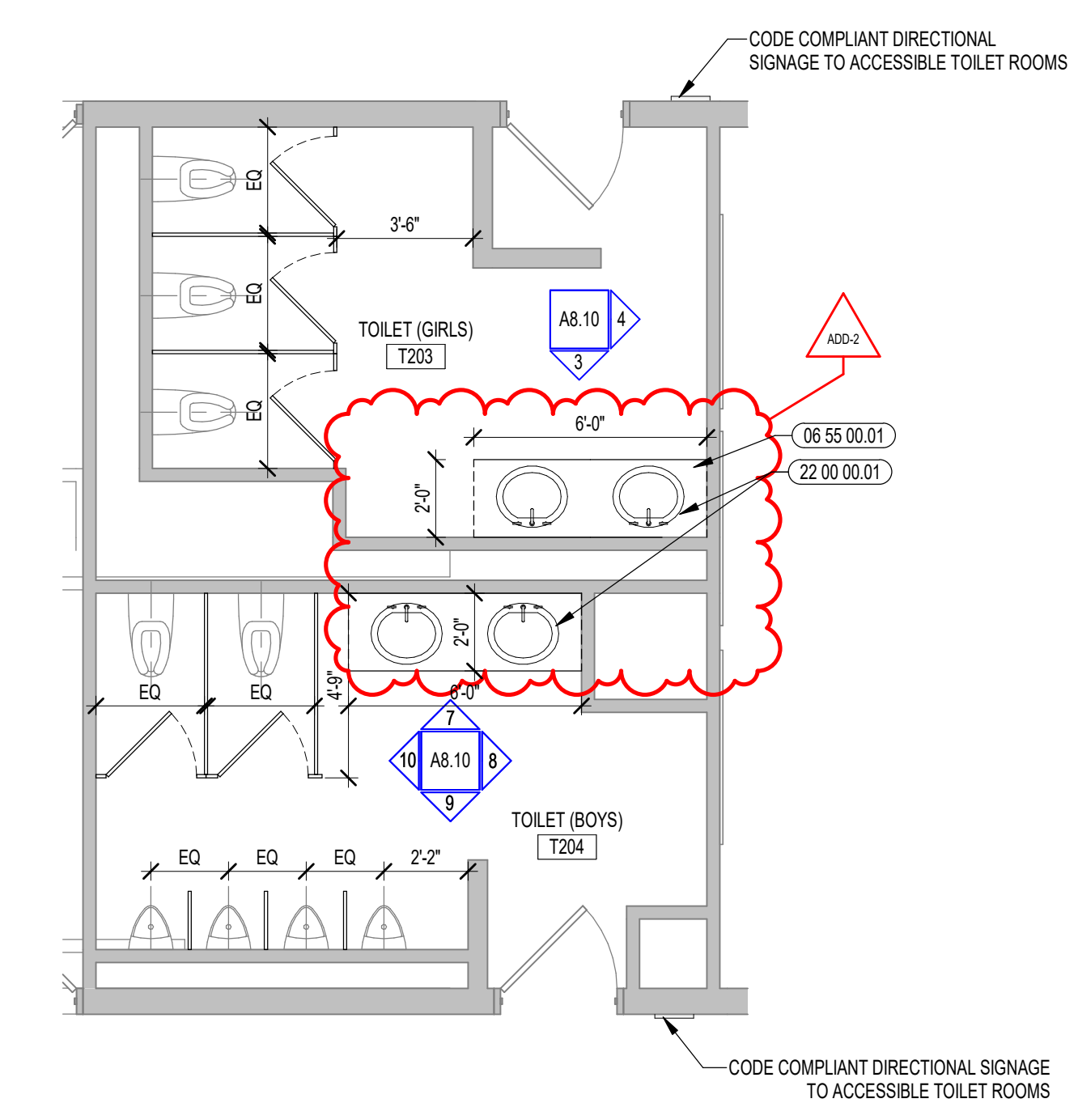
9 TOILET ROOM INTERIOR ELEVATION
1/4" = 1'-0"



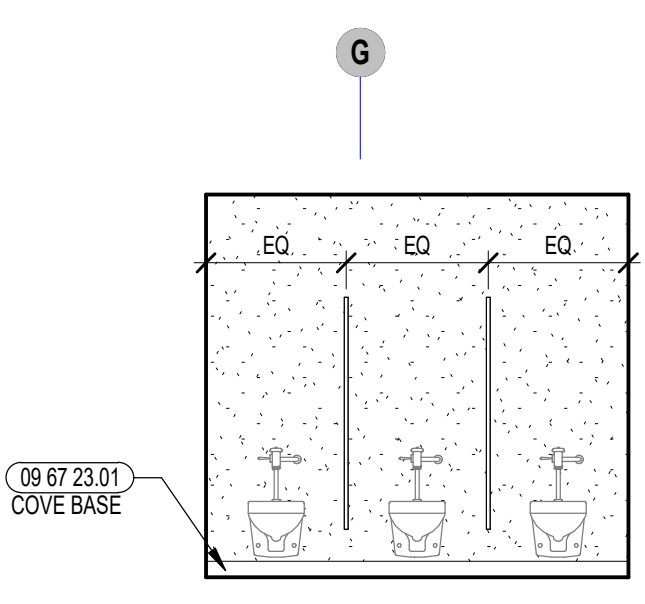
8 TOILET ROOM INTERIOR ELEVATION
1/4" = 1'-0"



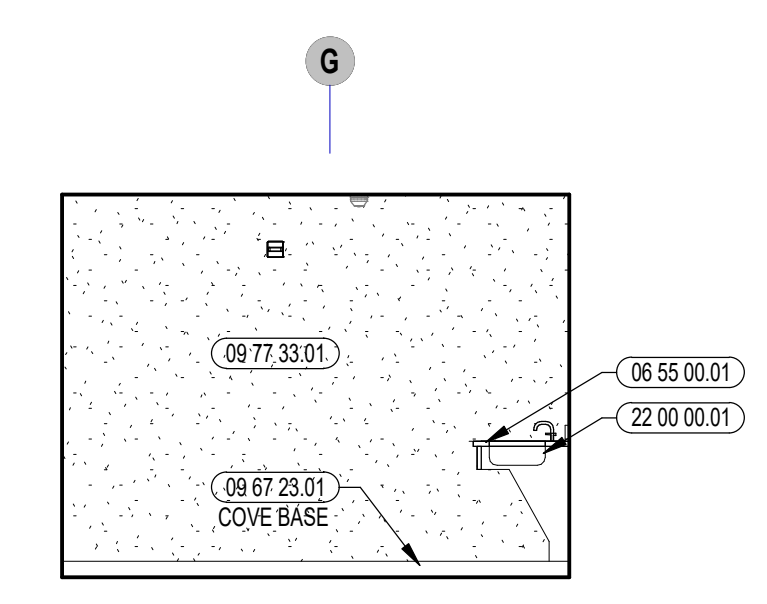
7 TOILET ROOM INTERIOR ELEVATION
1/4" = 1'-0"



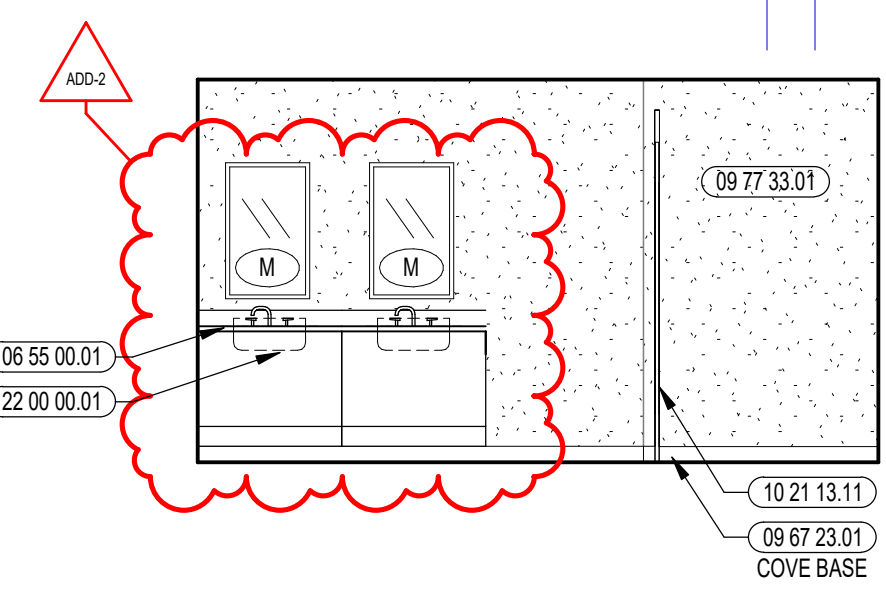
6 TOILET ROOM ENLARGED PLAN
1/4" = 1'-0"



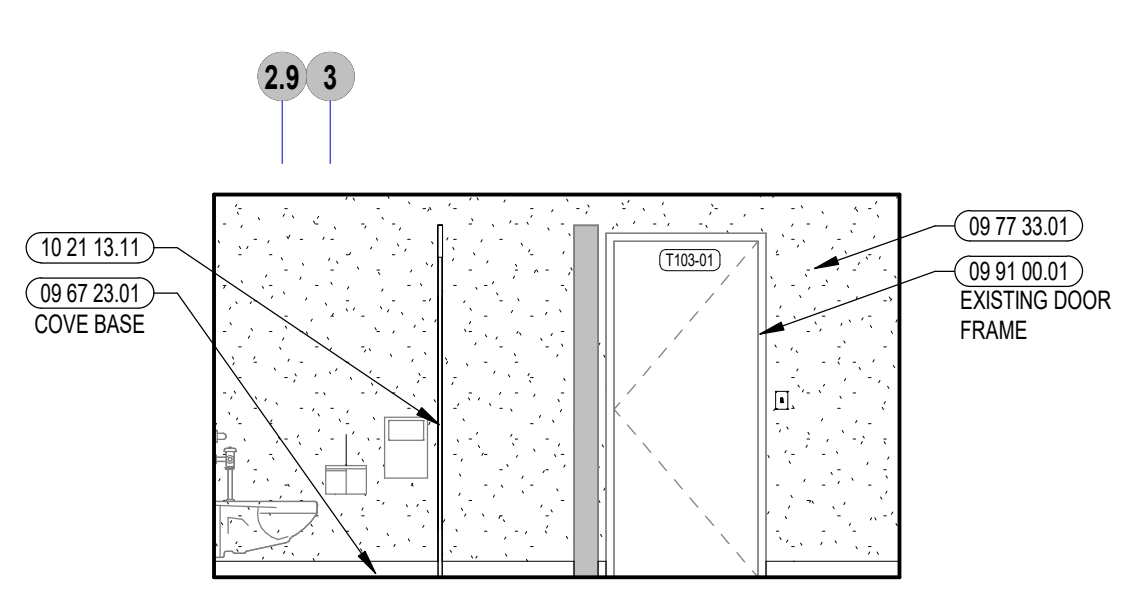
5 TOILET ROOM INTERIOR ELEVATION
1/4" = 1'-0"



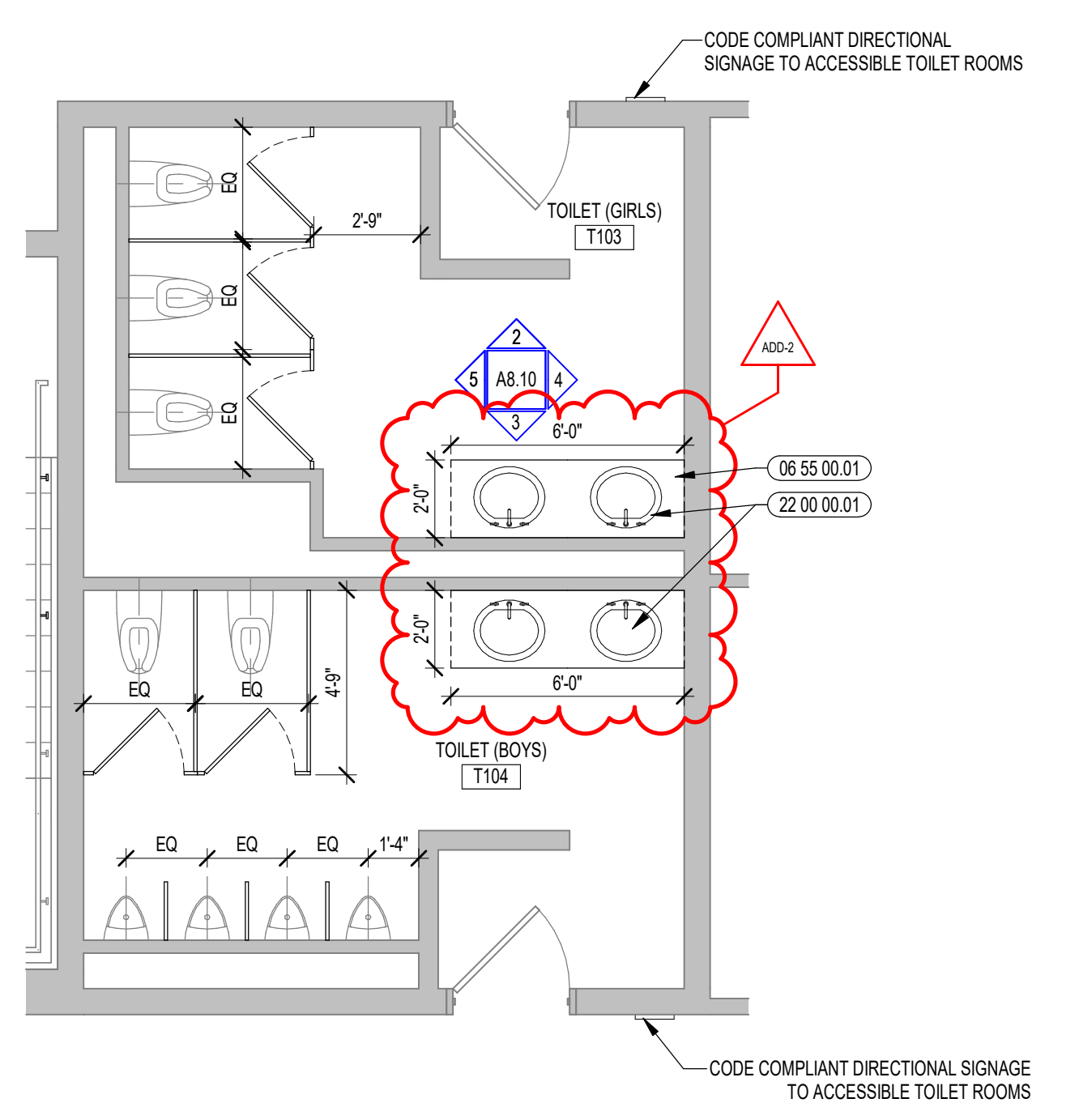
4 TOILET ROOM INTERIOR ELEVATION
1/4" = 1'-0"



3 TOILET ROOM INTERIOR ELEVATION
1/4" = 1'-0"



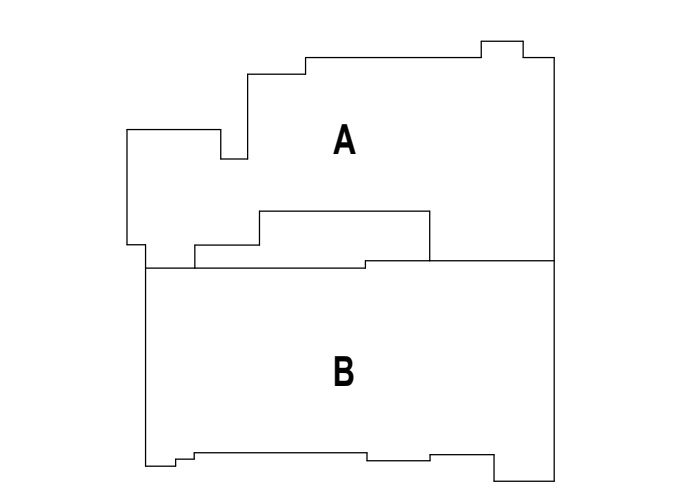
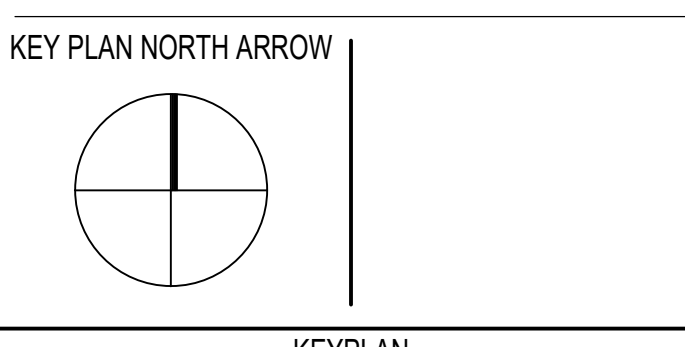
2 TOILET ROOM INTERIOR ELEVATION
1/4" = 1'-0"



1 TOILET ROOM ENLARGED PLAN
1/4" = 1'-0"

GENERAL NOTES:
1. REFERENCE SAMPLE WALL TILE PATTERN DRAWINGS ON A1 SERIES FOR ADDITIONAL INFORMATION, TYPICAL.
2. NOT ALL POWER & DATA OUTLET SWITCHING LOCATIONS SHOWN, COORDINATE WITH ELECTRICAL AND TECHNOLOGY DRAWINGS FOR LOCATIONS.

ADDENDUM #2 ADD-2 7.10.2023
BID PACKAGE #2



DRAWING NAME:
ENLARGED TOILET ROOM PLANS & INTERIOR ELEVATIONS

DRAWN BY: MS
REVIEWED BY: JQ
SCALE: AS INDICATED | **DRAWING NUMBER:**
JOB NO.: 2202.04 | **A8.10**
DATE: June 22, 2023

PLUMBING LEGEND

GENERAL		DRAINAGE		VALVES	
	EXISTING PIPING TO BE REMOVED		IW INDIRECT WASTE		BALANCING VALVE
	HEAVY LINE INDICATES NEW WORK		KW KITCHEN WASTE		BALL VALVE
	LIGHT LINE INDICATES EXISTING WORK		KWB KITCHEN WASTE BURIED		BALL VALVE NORMALLY CLOSED
	PIPING INTERRUPTED OR TO BE CONTINUED		KV KITCHEN VENT		BALL VALVE NORMALLY OPEN
	CAP OR END OF PIPE		ORL OVERFLOW RAINWATER / OVERFLOW STORM DRAIN		BUTTERFLY VALVE
	CONNECT TO EXISTING		RL RAINWATER / STORM DRAIN		CHECK VALVE
	DETAIL DESIGNATION TAG		RLB RAINWATER / STORM DRAIN BURIED		GATE VALVE
	DIRECTION OF SLOPE		LW LAB WASTE		GATE VALVE NORMALLY CLOSED
	ELBOW DOWN OR DROP		LWB LAB WASTE BURIED		MIXING VALVE (ELEVATION & PLAN)
	ELBOW UP OR RISE		LV LAB WASTE VENT		PRESSURE REDUCING / REGULATING VALVE
	FLOW IN DIRECTION OF ARROW		LVB LAB WASTE VENT BURIED		REDUCED PRESSURE BACKFLOW PREVENTER (ADJUSTABLE SET TURNED UP)
	HANDICAPPED ACCESSIBLE		US UNDERSLAB DRAINAGE BURIED		REDUCED PRESSURE BACKFLOW PREVENTER (ADJUSTABLE SET TURNED DOWN)
	TEE LOOKING DOWN		GW GARAGE WASTE		SOLENOID VALVE
	TEE LOOKING UP		GWB GARAGE WASTE BURIED		TEMPERATURE AND PRESSURE RELIEF VALVE
ABBREVIATIONS			V SANITARY VENT		VIV VALVE IN VERTICAL
AC ABOVE CEILING	GPM GALLONS PER MINUTE		W SOIL / SANITARY WASTE	ACCESSORIES	
AD ACCESS DOOR	GWH GAS WATER HEATER		WB SOIL / SANITARY WASTE BURIED		FM FLOW METER
AFF ABOVE FINISH FLOOR	HB HOSE BIBB		WHT SOIL / SANITARY PIPING W/ HEAT TRACE		GH GROUND HYDRANT
AFG ABOVE FINISH GRADE	HP HORSEPOWER		RL RAIN LEADER PIPING W/ HEAT TRACE		HB HOSE BIBB
AP ACCESS PANEL	HVAC HEAT, VENTILATION & AIR CONDITIONING		AD AREA DRAIN		IF IN-LINE FILTER
ARCH ARCHITECT	ID INSIDE DIAMETER		CO CLEANOUT		PG PIPE GUIDE / BEAM PENETRATION
BHP BRAKE HORSEPOWER	INV INVERT		FCO FLOOR CLEANOUT		PG PRESSURE GAUGE
BT BATH TUB	L LAVATORY		FD FLOOR DRAIN		STR STRAINER
BPW BED PAN WASHER	LS LAB SINK		GCO GROUND CLEANOUT		TP TRAP PRIMER
BLDG BUILDING	MAX MAXIMUM		OD OVERFLOW DRAIN / SECONDARY ROOF DRAIN		UNION
CI CAST IRON	MIN MINIMUM		P-TRAP		VB VACUUM BREAKER
CFM CUBIC FEET PER MINUTE	MSB MOP SERVICE BASIN		RD ROOF DRAIN		WH WALL HYDRANT
CLNG CEILING	N/A NOT APPLICABLE		WCO WALL CLEANOUT		WHA WATER HAMMER ARRESTOR / SHOCK ABSORBER
CLDI CEMENT LINED DUCTILE IRON	NC NORMALLY CLOSED	GAS			WPS WATER PROOF PIPE SLEEVE
CP CHROME PLATED	NO NORMALLY OPEN		CA COMPRESSED AIR		
CS CUP SINK	NTS NOT TO SCALE	WATER			
DIA DIAMETER	NIC NOT IN CONTRACT		140°F 140° HOT WATER		
DWG DRAWING	OD OUTSIDE DIAMETER		140°FHR 140° HOT WATER RETURN		
DF DRINKING FOUNTAIN	ORD OVERFLOW ROOF DRAIN		CW COLD WATER		
EFF EFFICIENCY	PC PLUMBING CONTRACTOR		CW - WD COLD WATER - WASHDOWN		
EL ELEVATION	POS PROVIDED UNDER OTHER SECTION		HW HOT WATER		
EW ELECTRIC WATER COOLER	RPM REVOLUTIONS PER MINUTE		HWR HOT WATER RETURN		
EW EMERGENCY EYE WASH	SC SITE CONTRACTOR		TP TRAP PRIMER		
ES EMERGENCY SHOWER	SH SHOWER		EW EMERGENCY WATER W/ HEAT TRACE		
EWH ELECTRIC WATER HEATER	SK SINK		NPCW NON POTABLE COLD WATER		
ETBR EXISTING TO BE REMOVED	SPEC SPECIFICATION		NPHW NON POTABLE HOT WATER		
ETR EXISTING TO REMAIN	ST, ST STAINLESS STEEL		NPHWR NON POTABLE HOT WATER RETURN		
FFE FINISH FLOOR ELEVATION	SF SQUARE FEET		HPHS HEAT PUMP HOT WATER - SUPPLY		
FH FUME HOOD	SHH STEAM WATER HEATER		HPHWR HEAT PUMP HOT WATER - RETURN		
FLR FLOOR	TYP TYPICAL				
FT FOOT	UR URINAL				
FRS FLUSHING RIM SERVICE SINK	WC WATER CLOSET				
GALV GALVANIZED					
GC GENERAL CONTRACTOR					

REMARKS:
 ① SYMBOLS WITHIN LEGEND FOR REFERENCE ONLY. ALL SYMBOLS SHOWN MAY NOT BE APPLICABLE TO PROJECT.

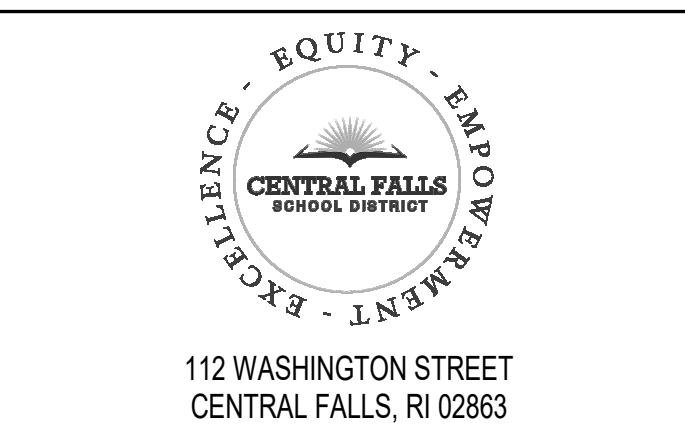
PLUMBING FIXTURE SCHEDULE

TAG	DESCRIPTION	FIXTURE		WATER SUPPLY		APPURTENANCES				WASTE & TRAP	CARRIER	CONNECTION SIZE								ADA MET	REMARKS							
		MANUFACTURER	MODEL NO.	MANUFACTURER	MODEL NO.	SUPPLY	MANUFACTURER	MODEL NO.	TYPE			MANUFACTURER	MODEL NO.	TYPE	WASTE	VENT	HOT	COLD	TR			NBSW	NPHW	NPHWR	LV	KV		
L-1	LAVATORY - UNDERMOUNT	AMERICAN STANDARD	OVALYN 0496300	AMERICAN STANDARD	MONTERREY 5500.140	MANUAL FAUCET	CHICAGO FAUCETS	131-ABNF	MIXING VALVE	MCGUIRE MFG CO	LFBV-175 155WC	ANGLE STOPS OFFSET GRID STRAINER	MCGUIRE MFG CO 8090CBOS	JR SMITH TO SUIT	2"	2"	1/2"	1/2"									Y	1.5 GPM

NOTE: *ALL PLUMBING FIXTURES THAT ARE ACCESSIBLE & SHALL BE INSTALLED PER ADA STANDARDS
 *REFER TO ARCHITECTURAL DRAWINGS FOR EXACT LOCATIONS AND MOUNTING HEIGHTS.
 *REFER TO ARCHITECTURAL EQUIPMENT SCHEDULE FOR ADDITIONAL INFORMATION.
 *CONTRACTOR TO PROVIDE SOLID INTERCEPTOR ON ALL ART ROOM SINKS.

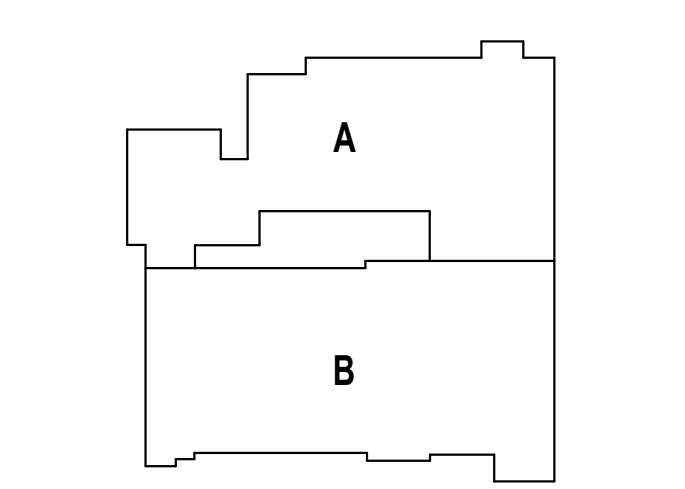


GRIFFITH & VARY, INC.
 Consulting Engineers
 12 Kendrick Road
 Weymouth, MA 02571
 508-295-0050 (T)
 508-295-0003 (F)
 www.griffithandvary.com



KEYNOTE LEGEND:
 (Empty space for keynotes)

ADD-2 ADDENDUM # 07-10-23
 100% CONSTRUCTION DOCUMENTS
 BID PACKAGE #1
 KEY PLAN NORTH ARROW

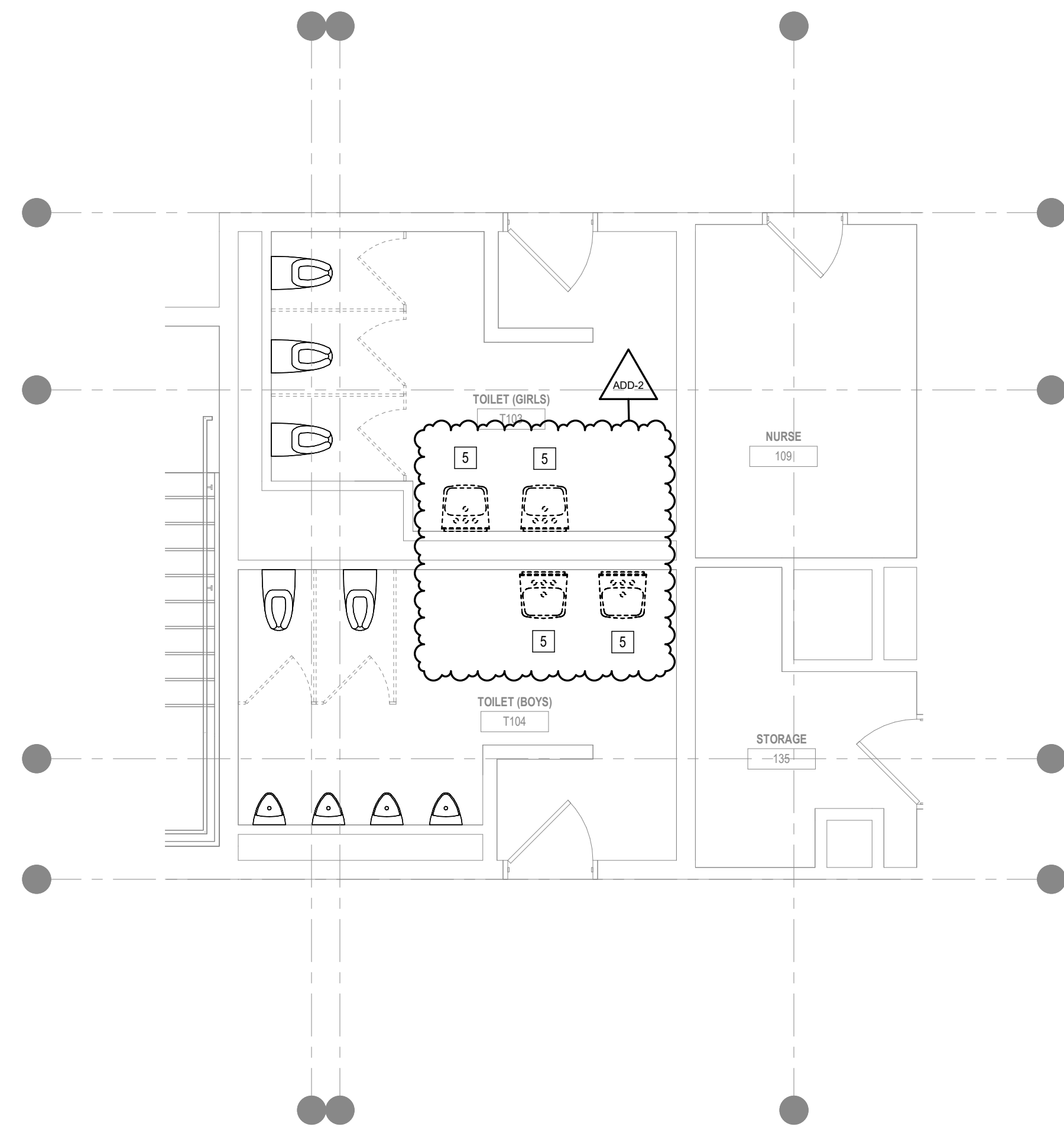


DRAWING NAME:
PLUMBING LEGEND, GENERAL NOTES & SCHEDULES
 DRAWN BY: SPD
 REVIEWED BY: AMD
 SCALE: AS NOTED | DRAWING NUMBER:
 JOB NO.: 2202.04
 DATE: June 9, 2023 | **P0.01 B1**

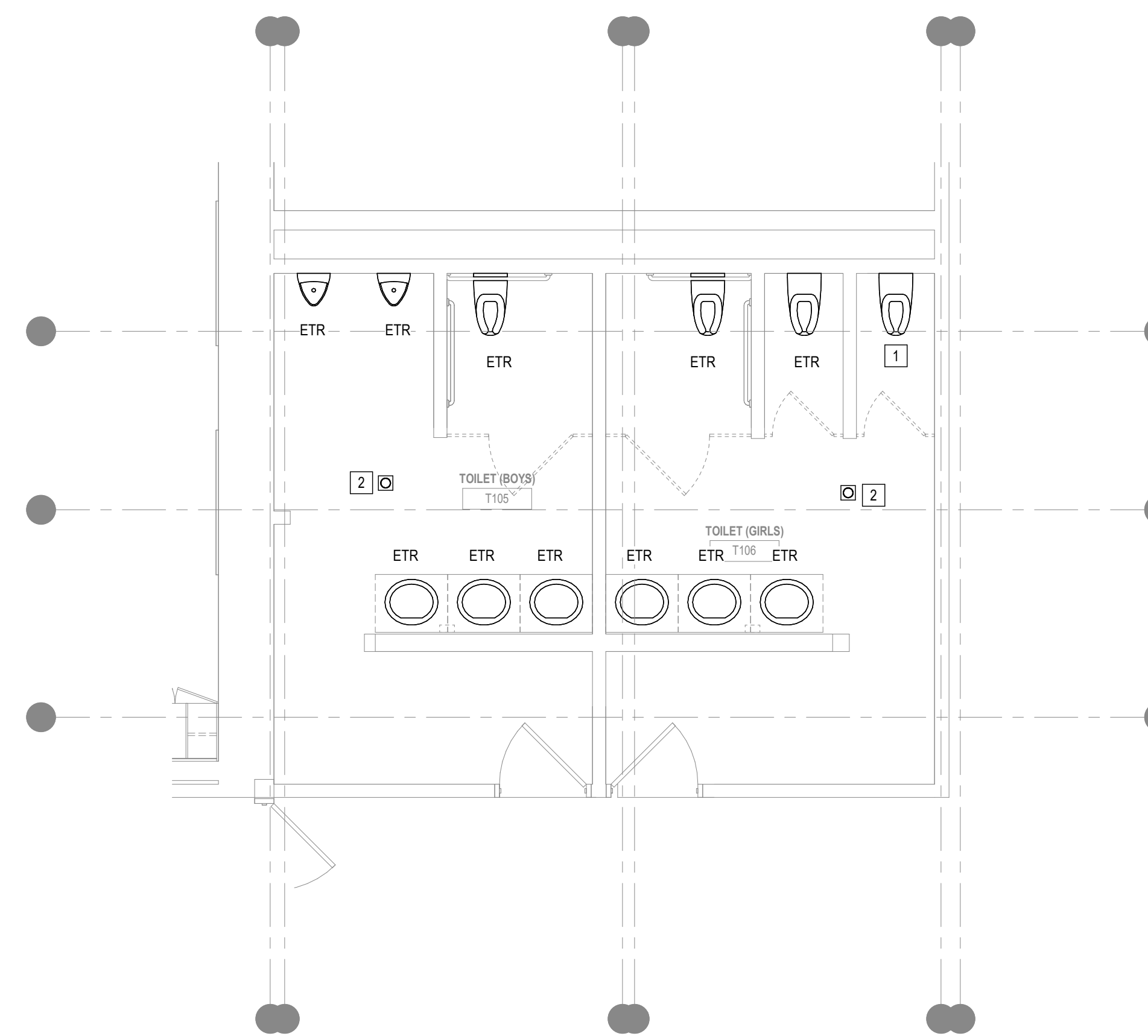
KEYED NOTES

- 1 EXISTING WATER CLOSET TO REMAIN. REMOVE EXISTING TOILET SEAT.
- 2 EXISTING FLOOR DRAIN & ALL ASSOCIATED PIPING TO REMAIN. REMOVE EXISTING GRATE & PROVIDE PROPER COVER DURING CONSTRUCTION AS REQUIRED. REFER TO RENOVATION PLANS.
- 3 PROVIDE NEW FLOOR GRATE AT EXISTING FLOOR DRAIN.
- 4 PROVIDE NEW SEAT AT WATER CLOSET EQUAL TO AMERICAN STANDARD ELONGATED SEAT, MODEL 2801.110.
- 5 EXISTING LAVATORY & ASSOCIATED TRIM INCLUDING FAUCET, TRAPS & STRAINERS TO BE REMOVED IN ITS ENTIRETY. REMOVED EXISTING CARRIERS WHERE APPLICABLE. MODIFY EXISTING WATER, WASTE & VENT PIPING FOR RECONNECTION AS REQUIRED. REFER TO RENOVATION PLANS.
- 6 CTE WATER, WASTE & VENT PIPING W/ NEW 1/2 HW, 1/2" CW, 2" W & 2" V AS REQUIRED.

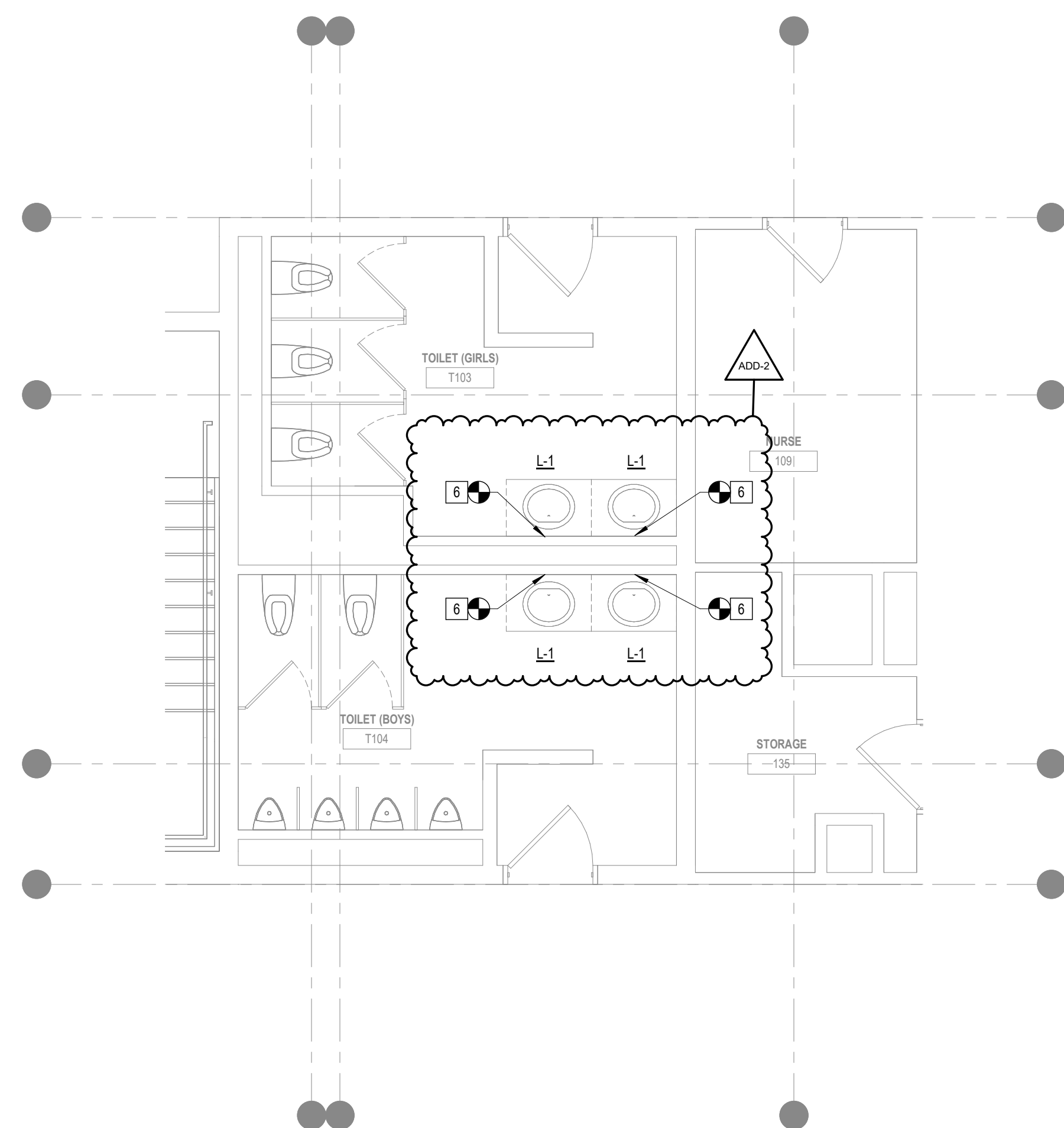
ADD-2



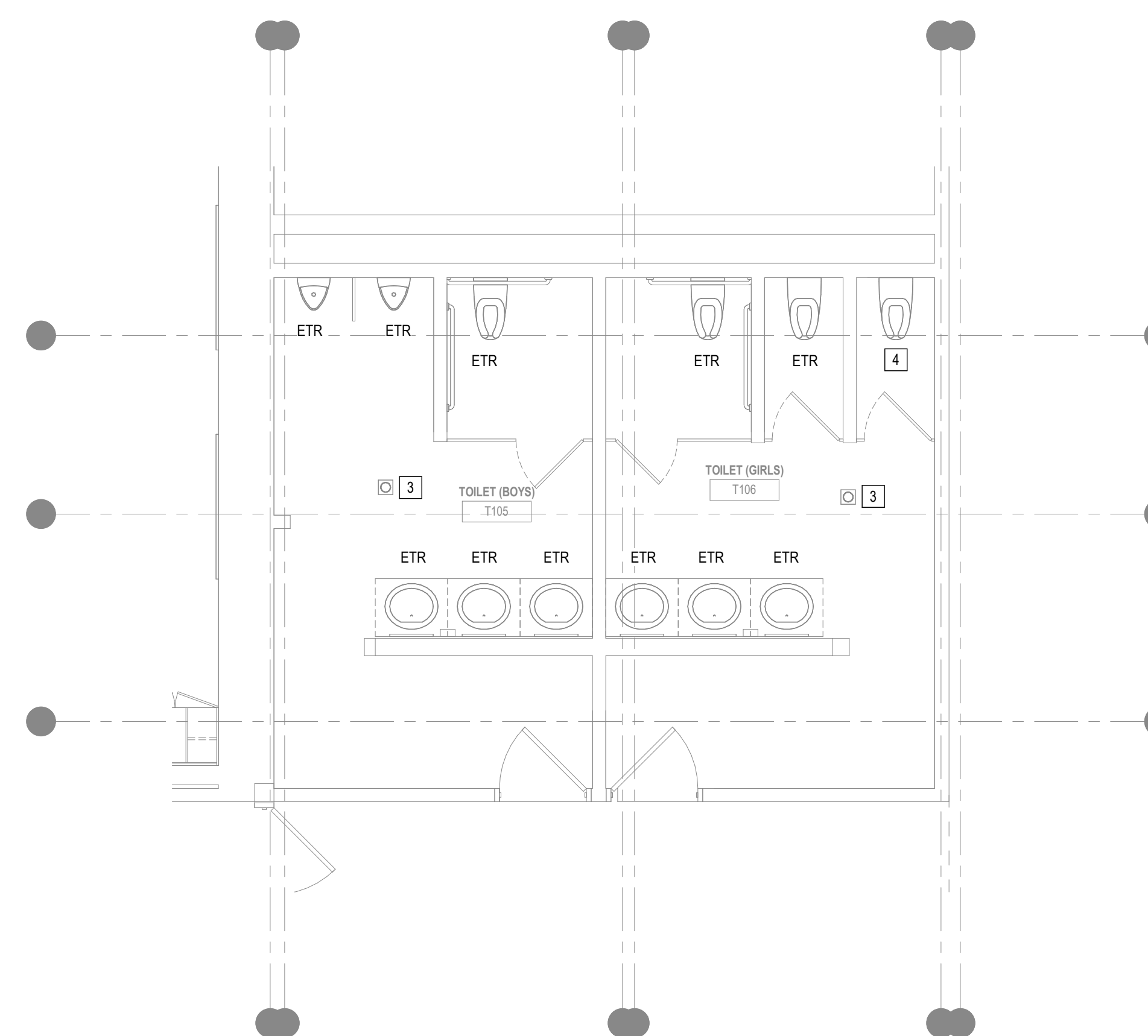
1 ENLARGED DEMO TOILET PLAN - T103 & T104
1/4" = 1'-0"



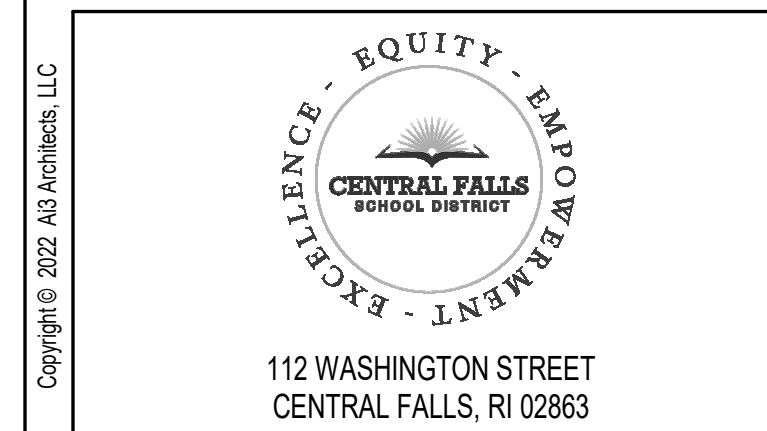
2 ENLARGED DEMO TOILET PLAN - T105 & T106
1/4" = 1'-0"



3 ENLARGED TOILET PLAN - T103 & T104
1/4" = 1'-0"



4 ENLARGED TOILET PLAN - T105 & T106
1/4" = 1'-0"



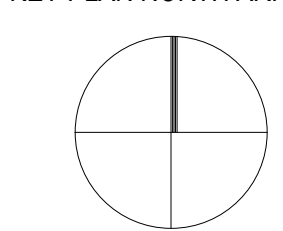
112 WASHINGTON STREET
CENTRAL FALLS, RI 02863

KEYNOTE LEGEND:

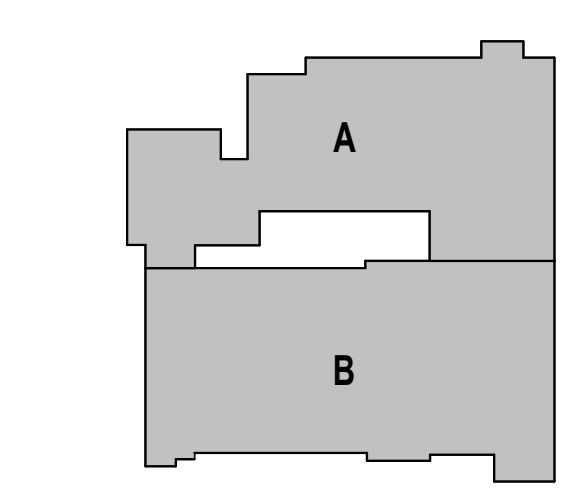
ADD-2 ADDENDUM #2 07-10-23

100% CONSTRUCTION DOCUMENTS
BID PACKAGE #1

KEY PLAN NORTH ARROW



KEYPLAN



DRAWING NAME:

**PLUMBING
ENLARGED TOILET PLANS**

DRAWN BY: SPD

REVIEWED BY: AMD

SCALE: AS NOTED | DRAWING NUMBER:

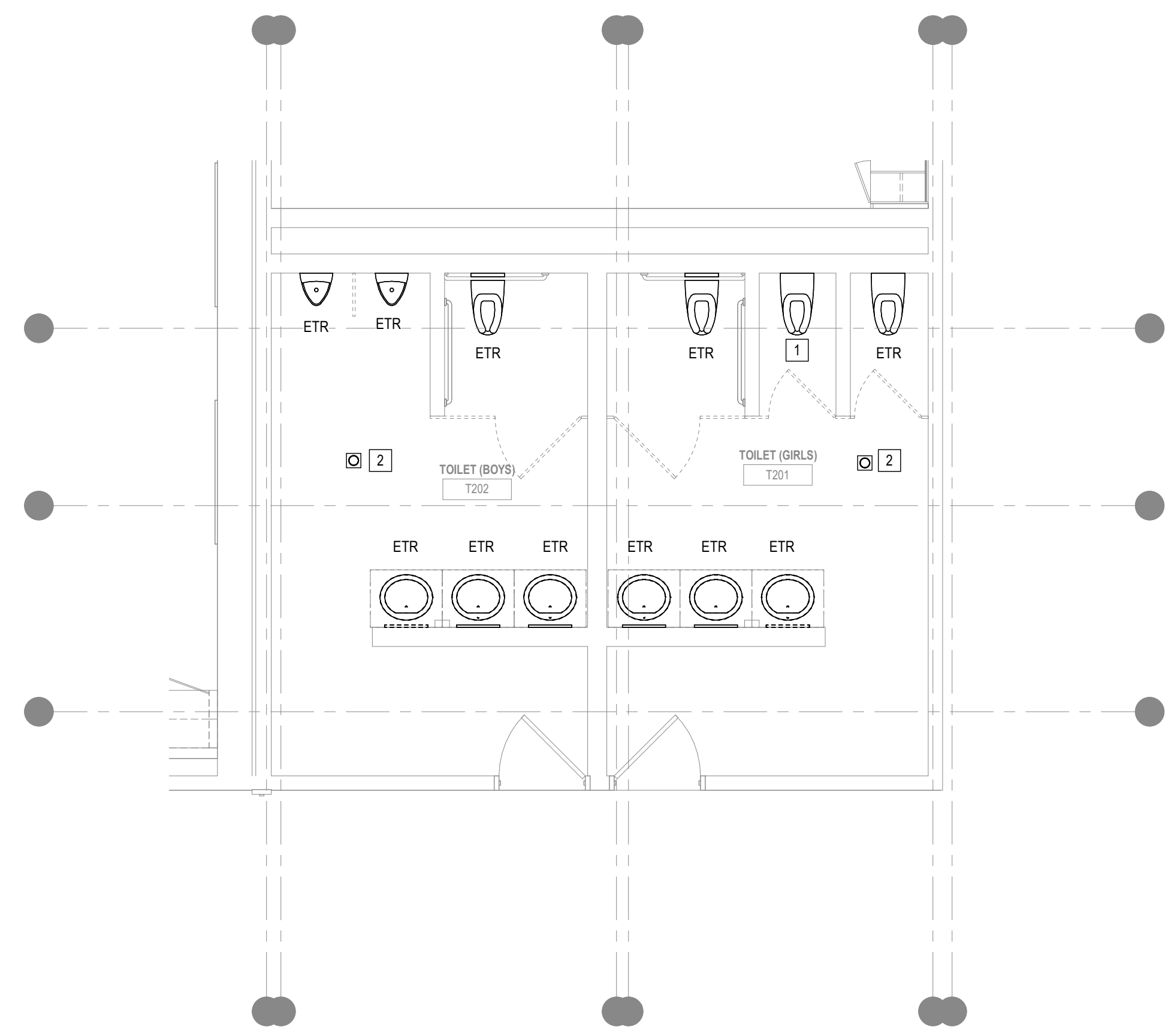
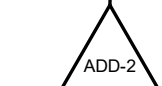
JOB NO.: 2202.04

DATE: June 9, 2023

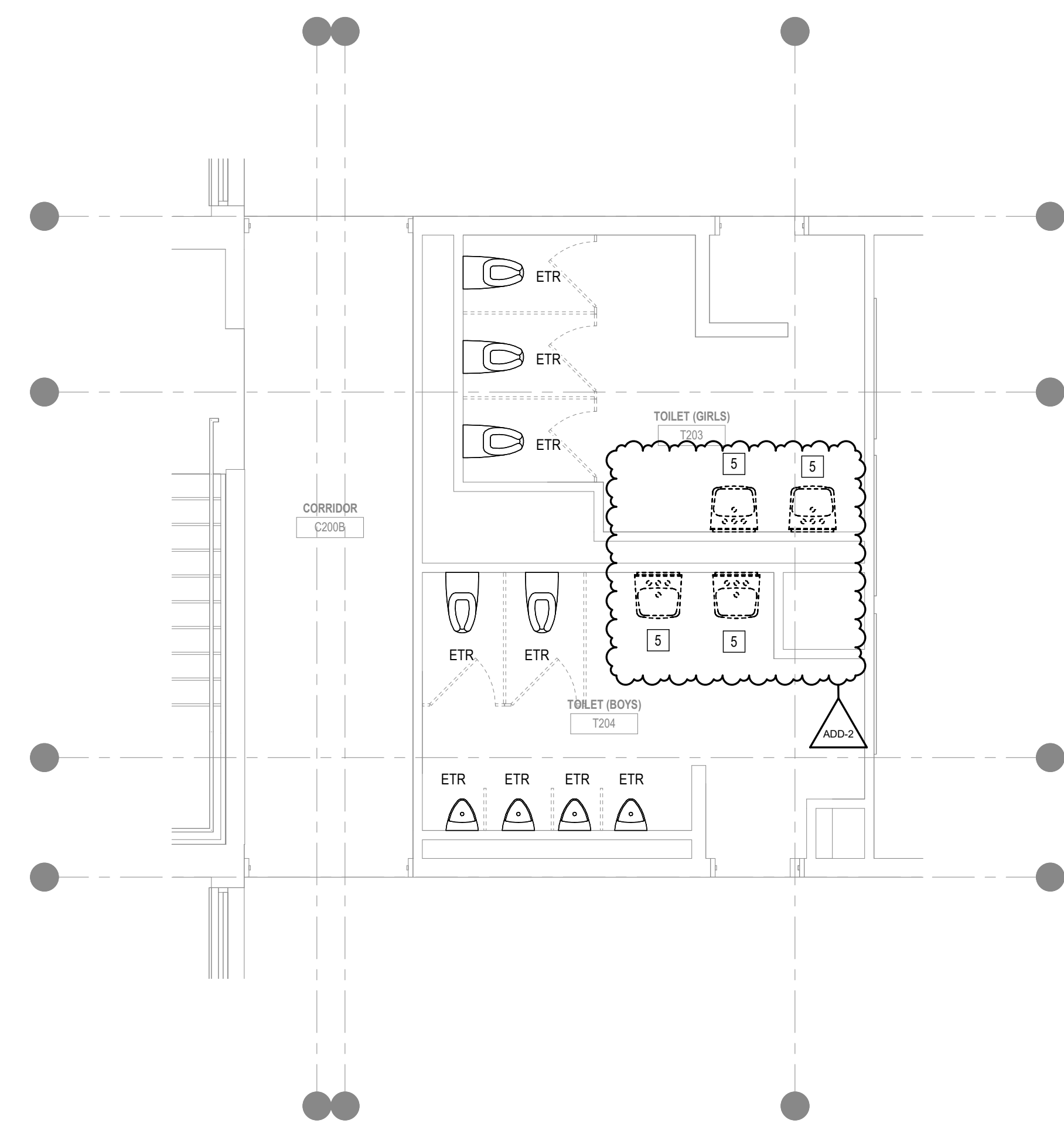
P3.01 B1

KEYED NOTES

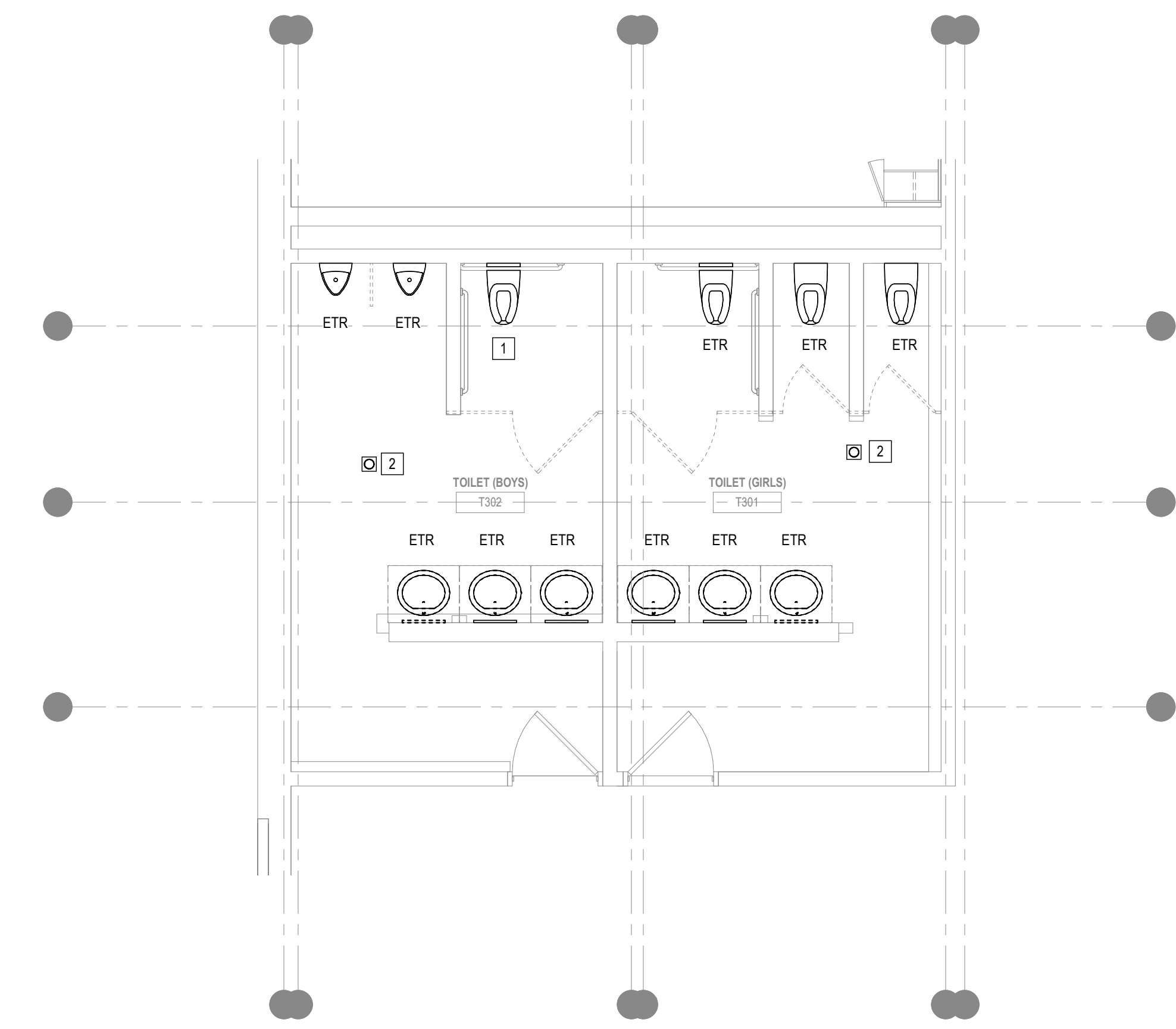
- 1 EXISTING WATER CLOSET TO REMAIN. REMOVE EXISTING TOILET SEAT.
- 2 EXISTING FLOOR DRAIN & ALL ASSOCIATED PIPING TO REMAIN. REMOVE EXISTING GRATE & PROVIDE PROPER COVER DURING CONSTRUCTION AS REQUIRED. REFER TO RENOVATION PLANS.
- 3 PROVIDE NEW FLOOR GRATE AT EXISTING FLOOR DRAIN.
- 4 PROVIDE NEW SEAT AT WATER CLOSET, EQUAL TO AMERICAN STANDARD.
- 5 EXISTING LAVATORY & ASSOCIATED TRIM INCLUDING FAUCET, TRAPS & STRAINERS TO BE REMOVED IN ITS ENTIRETY. REMOVE EXISTING CARRIERS WHERE APPLICABLE. MODIFY EXISTING WATER, WASTE & VENT PIPING FOR RECONNECTION AS REQUIRED. REFER TO RENOVATION PLANS.
- 6 CTE WATER, WASTE & VENT PIPING W/ NEW 1/2 HW, 1/2" CW, 2" W & 2" V AS REQUIRED.



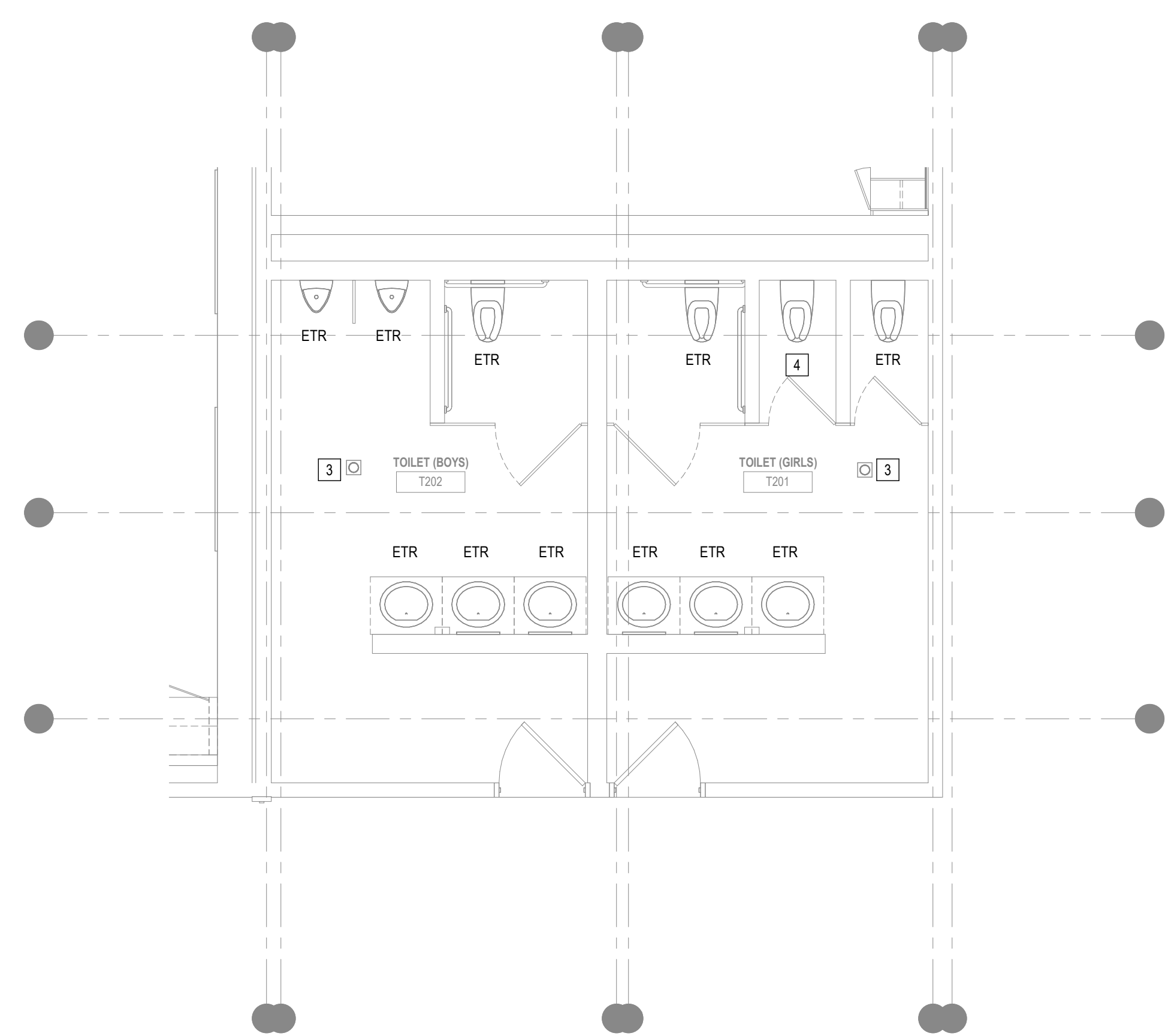
1 ENLARGED DEMO TOILET PLAN - T201 & T202
1/4" = 1'-0"



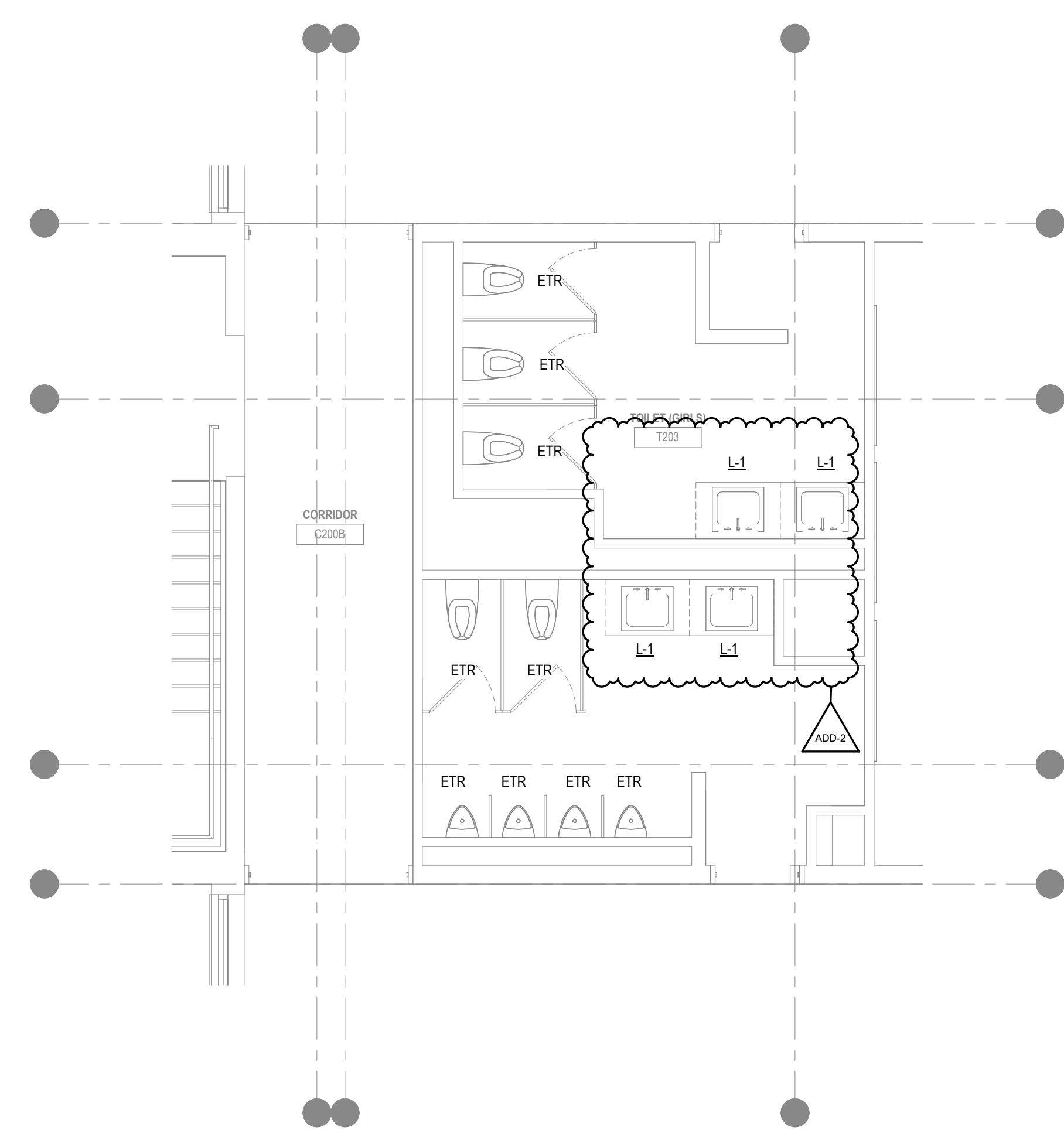
2 ENLARGED DEMO TOILET PLAN - T203 & T204
1/4" = 1'-0"



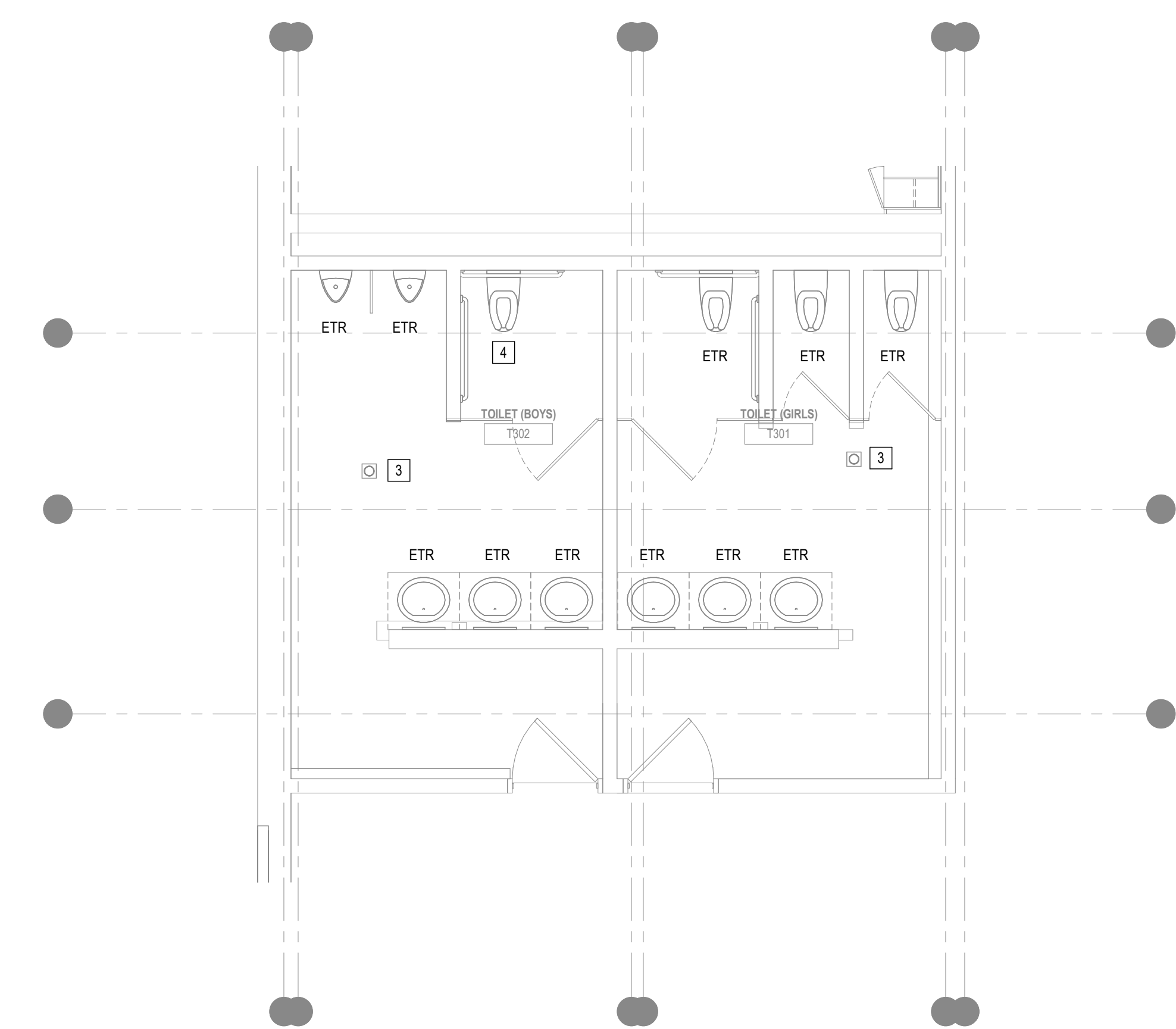
3 ENLARGED DEMO TOILET PLAN - T301 & T302
1/4" = 1'-0"



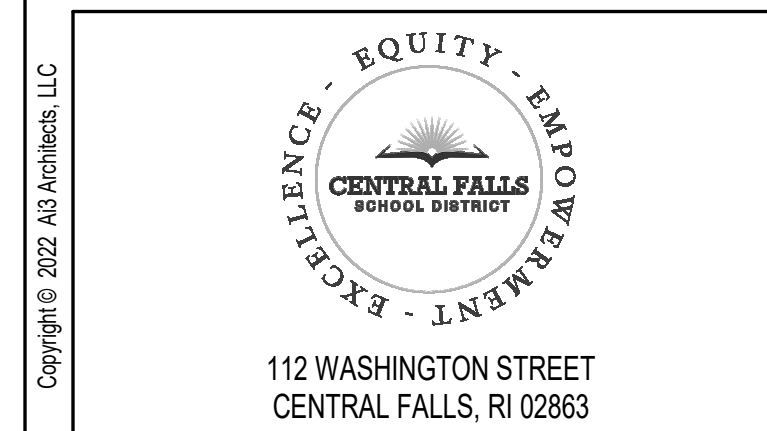
4 ENLARGED TOILET PLAN - T201 & T202
1/4" = 1'-0"



5 ENLARGED TOILET PLAN - T203 & T204
1/4" = 1'-0"



6 ENLARGED TOILET PLAN - T301 & T302
1/4" = 1'-0"



112 WASHINGTON STREET
CENTRAL FALLS, RI 02863

KEYNOTE LEGEND:

ADD-2 ADDENDUM #2 07-10-23
100% CONSTRUCTION DOCUMENTS
BID PACKAGE #1

KEY PLAN NORTH ARROW

KEYPLAN

DRAWING NAME:
**PLUMBING
ENLARGED TOILET PLANS**

DRAWN BY: SPD
REVIEWED BY: AMD

SCALE: AS NOTED | DRAWING NUMBER:
JOB NO.: 2202.04
DATE: June 9, 2023 **P3.02 B1**

Copyright © 2022 Ai3 Architects, LLC

TABLE OF CONTENTS

DIVISION 00 — PROCUREMENT AND CONTRACTING REQUIREMENTS

	Document 00 01 01	Project Cover
	Document 00 01 02	Project Directory
ADD #2	Document 00 01 10	Table of Contents
	Document 00 11 13	Advertisement for Bids
	Document 00 21 13	Instructions to Bidders
	Document 00 41 13	Form for General Bid
	Document 00 43 13	Bid Bond (<i>AIA Document A310 – 2010</i>)
	Document 00 45 13	Disadvantaged Business Enterprise Affidavit
	Document 00 45 15	Bidder's Qualifications (<i>AIA Form A305</i>)
	Document 00 52 00	Agreement Form (<i>AIA Form A101</i>), <i>Standard Form of Agreement Between Owner and Contractor where the basis of payment is a Stipulated Sum.</i>
	Document 00 61 13	Performance and Payment Bond (<i>AIA Document A312 – 2010</i>)
	Document 00 62 12	Product Submittal) Form
	Document 00 63 13	Request for Interpretation (RFI) Form
	Document 00 63 25	Product Substitution Form
	Document 00 72 00	General Conditions of the Contract for Construction (<i>AIA Document A201</i>) <i>with Owner's amendments. (not bound herewith)</i>
	Document 00 73 46	Prevailing Wage Determination Schedule

DIVISION 01 — GENERAL REQUIREMENTS

	Section 01 10 00	Summary
	Section 01 14 00	Work Restrictions <i>(with Academic/Work Schedule Attachment)</i>
	Section 01 25 13	Product Substitution Procedures
	Section 01 26 13	Requests for Interpretation
	Section 01 29 00	Payment Procedures
	Section 01 31 00	Project Management and Coordination
	Section 01 32 00	Construction Progress Documentation
	Section 01 33 00	Submittal Procedures
	Section 01 35 16	Alteration Project Procedures
	Section 01 41 00	Regulatory Requirements
	Section 01 42 00	References
	Section 01 45 00	Quality Control
	Section 01 50 00	Temporary Facilities and Controls
	Section 01 60 00	Product Requirements
	Section 01 73 00	Execution
	Section 01 73 29	Cutting and Patching
	Section 01 74 19	Construction Waste Management and Disposal
	Section 01 75 00	Starting and Adjusting
	Section 01 77 00	Closeout Procedures
	Section 01 78 00	Closeout Submittals
	Section 01 78 36	Warranties

DIVISION 02 — DEMOLITION

	Section 02 41 19	Selective Demolition
--	------------------	----------------------

DIVISION 06 — WOOD, PLASTICS AND COMPOSITES

Section 06 10 00 Rough Carpentry

ADD #2 Section 06 61 16 Solid Surfacing Fabrications

DIVISION 07 — THERMAL AND MOISTURE PROTECTION

Section 07 92 00 Joint Sealants

DIVISION 08 — OPENINGS

Section 08 71 00 Door Hardware

DIVISION 09 — FINISHES

Section 09 05 06 Common Work Results for Flooring

Section 09 22 16 Non-Structural Metal Framing

Section 09 29 00 Gypsum Board

Section 09 51 00 Acoustical Ceilings

Section 09 67 23 Resinous Flooring

Section 09 77 33 Sanitary Wall Panels

Section 09 91 00 Painting

Document 09 91 23 Interior Painting Schedule

DIVISION 10 — SPECIALTIES

Section 10 14 00 Signage

Section 10 21 13 Toilet Compartments

Section 10 28 13 Toilet Accessories

DIVISION 21 — FIRE SUPPRESSION

Section 21 00 00 Fire Protection

DIVISION 26 — ELECTRICAL

Section 26 00 00 Electrical

End - Table of Contents

Section 06 61 16
SOLID SURFACING FABRICATIONS

PART 1 - GENERAL

1.1 GENERAL PROVISIONS

- A. The BIDDING REQUIREMENTS, CONTRACT FORMS, and CONTRACT CONDITIONS as listed in the Table of Contents, and applicable parts of Division 1 - GENERAL REQUIREMENTS, shall be included in and made a part of this Section.
- B. Examine all Drawings and all other Sections of the Specifications for requirements therein affecting the work of this Section.

1.2 SUMMARY

- A. Furnish and install the following:
 - 1. Solid surface (solid polymer) countertops and splashes.
 - 2. Sealant, for joints between countertops, backsplashes and abutting surfaces.
- B. Make all cut-outs within solid surfacing items as required to accommodate sinks, and other plumbing fixtures, from templates provided by the respective trades.

1.3 RELATED REQUIREMENTS

- A. Section 06 10 00 - ROUGH CARPENTRY: Wood blocking and nailers.
- B. Division 22 - PLUMBING: Plumbing fixtures and piping.

1.4 REFERENCES

- A. Referenced Standards: Comply with applicable requirements of the following standards and those others referenced in this Section, under the provisions of Section 01 42 00 - REFERENCES. The standards referenced herein are included to establish recognized minimum quality only. Where these standards conflict with other specified requirements, the most restrictive requirements shall govern. Equivalent quality and testing standards will be acceptable, subject to their timely submission, review and acceptance by the Architect.
 - 1. All applicable federal, state and municipal codes, laws and regulations regarding flammability and smoke generation of interior finishes.
 - 2. ASTM C920 - Standard Specification for Elastomeric Joint Sealants.
 - 3. ASTM D638 – Standard Test Method for Tensile Properties of Plastics.
 - 4. ASTM D785 - Standard Test Method for Rockwell Hardness of Plastics and Electrical Insulating Materials.
 - 5. ASTM D790 - Standard Test Method for Flexural Properties of Unreinforced and Reinforced Plastics and Electrical Insulating Materials.
 - 6. ASTM D5420 - Standard Test Method for Impact Resistance of Flat, Rigid Plastic Specimen by Means of a Striker Impacted by a Falling Weight (Gardner Impact).

7. ASTM E84 - Standard Test Method for Surface Burning Characteristics of Building Materials.
8. ASTM E228 - Standard Test Method for Linear Thermal Expansion of Solid Materials with a Push-Rod Dilatometer.
9. ASTM G21 – Standard Practice for Determining Resistance of Synthetic Polymeric Materials to Fungi.
10. ASTM G22 - Standard Practice for Determining Resistance of Plastics to Bacteria.
11. ASTM G155 - Standard Practice for Operating Xenon Arc Light Apparatus for Exposure of Materials.

B. Definitions:

1. Solid Surface: Non-porous, homogeneous material maintaining the same composition throughout the part with a composition of acrylic polymer, aluminum trihydrate filler and pigment.

1.5 ADMINISTRATIVE REQUIREMENTS

A. Coordination:

1. General: Coordinate the work of this Section with the respective trades responsible for installing interfacing and adjoining work for proper sequence of installation, and ensure that the work performed hereunder is acceptable to such trades for the installation of their work.

B. Pre-Installation Meetings: At least two weeks prior to commencing the work of this Section, conduct a pre-installation conference at the Project site. Comply with requirements of Section 01 31 00 - PROJECT MANAGEMENT AND COORDINATION. Coordinate time of meeting to occur prior to installation of work under the related sections named below.

1. Required attendees: Owner or designated representative, Architect, General Contractor, Solid Surfacing Installer's Project Superintendent, surfacing manufacturer's technical representative and representatives of other related trades as directed by the Architect or Contractor, and representatives for installers of related work specified under the following Sections:
 - a. Division 22 - PLUMBING.
2. Agenda:
 - a. Scheduling of installation of solid surfacing fabrications.
 - b. Review of staging and material storage locations.
 - c. Coordination of work by other trades.
 - d. Installation procedures for ancillary equipment.
 - e. Protection of completed Work.
 - f. Establish weather and working temperature conditions to which Architect and Contractor must agree.
 - g. Emergency rain protection procedure.
 - h. Discuss process for manufacturer's inspection and acceptance of completed Work of this Section.

C. Sequencing:

1. Field Measurements: The fabricator is responsible for details and dimensions not controlled by Project conditions and shall show on his shop drawings all required field measurements beyond his control.
2. The Contractor shall acknowledge the fabricator's need for accurate field dimensions prior to custom fabrication.
3. The Contractor and the fabricator shall cooperate to establish and maintain these field dimensions.
 - a. Allow for adjustments within specified tolerances wherever taking of field measurements before fabrication might delay Work.

D. Scheduling:

1. Coordinate schedule of construction, size of access and route to place of installation to prevent delay of installation due to physical impediments. Any work involving the demolition and reconstruction of partitions, walls, floors, roofing, windows, or doors to place and install the work of this Section shall be performed at no additional cost to the Owner.

1.6 SUBMITTALS

- A. Information and Review Submittals: Submit the following under provisions of Section 01 33 00 - SUBMITTAL PROCEDURES:
1. Literature: Manufacturer's product data sheets, specifications, performance data. Identify available colors, shades, and gloss.
 2. Shop drawings: Large scale design details of minimum 1-1/2 inch-to-1 foot scale, showing abutting materials, installation conditions, clearances. Show profiles, jointing and fastening methods.
 - a. Coordination: Submit coordination drawings indicating plumbing and miscellaneous steel work indicating locations of wall rated or non-rated, blocking requirements, locations and recessed wall items and similar items.
 3. Selection samples:
 - a. Solid surfacing samples for initial color selection by Architect.
 - b. Sealant material: Manufacturer's standard strips of sealant, in all available colors, for selections by the Architect.
 - c. Provide additional samples as requested by Architect for initial selection of material colors and finishes.
 4. Verification samples:
 - a. 12 by 12 inch samples of solid surfacing materials.
 5. Qualification Submittals.
- B. Closeout Submittals: Submit the following under provisions of Section 01 78 00 - CLOSEOUT SUBMITTALS.
1. Maintenance Data: Manufacturer's care and maintenance data, including repair and cleaning instructions.
 2. Bonds and Warranty Documentation:
 - a. Manufacturer's Warranties and Guarantees as specified elsewhere herein this Section.

1.7 QUALITY ASSURANCE

- A. Fabricator and Installer; with a minimum of 3 years documented experience demonstrating previously successful work of the type specified herein, and approved by product manufacturer.
 - 1. Fabricator and Installer for solid surfacing products shall be trained and certified by solid surfacing manufacturer.

1.8 DELIVERY, STORAGE AND HANDLING

- A. Delivery and Acceptance Requirements:
 - 1. Do not deliver items to the site, until all specified submittals have been submitted to, and approved by, the Architect.
 - 2. Do not deliver solid surfacing materials to the project until all concrete, masonry, plaster and other wet work has been completed and dry.
 - 3. Deliver materials in original unopened packages, containers or bundles bearing brand name, and identification of manufacturer, with labels and package seals intact and legible.
- B. Storage and Handling Requirements:
 - 1. Store and handle materials following manufacturer's recommended procedures, and in accordance with material safety data sheets.
 - 2. Protect materials from damage due to moisture, direct sunlight, excessive temperatures, surface contamination, corrosion and damage from construction operations and other causes.

1.9 ENVIRONMENTAL REQUIREMENTS

- A. Maintain ambient temperature above 55 degrees Fahrenheit for 5 calendar days before, during, and after installation of solid surfacing fabrications; maintain temperature until Owner's Final Acceptance.

PART 2 - PRODUCTS

2.1 MANUFACTURERS

- A. Basis of Design (Specified Manufacturer): To establish a standard of quality, design and function desired, Drawings and specifications have been based on E. I. du Pont de Nemours and Company, Inc., Wilmington DE product, "Corian".
- B. Acceptable Manufacturers: Subject to compliance with the requirements specified herein, manufacturers offering products which may be incorporated in the work include the following, or approved equal:
 - 1. Aristec Acrylics LLC (Avonite Surfaces), Florence, KY., product "Avonite".
 - 2. E. I. du Pont de Nemours and Company, Inc., Wilmington DE product, "Corian".
 - 3. Formica Corporation, Cincinnati, OH, product: "Solid Surfacing".
 - 4. KPMG Corporation, Ontario CA., product: "Meganite".
 - 5. LG Hausys America, Inc., Adairsville, GA., product: "HI Macs".
 - 6. Lotte Chemical California, Inc., La Palma, CA., product: "Staron".

7. Wilsonart International, Inc. Temple TX, product: "Solid Surfaces".

2.2 PERFORMANCE

A. Performance/Design Criteria:

1. Tensile Strength (tested per ASTM D638): 6000 psi min.
2. Tensile Modulus (tested per ASTM D638): 1.5 x 10⁶ psi min.
3. Tensile Elongation (tested per ASTM D638): 0.4% min.
4. Flexural Strength (tested per ASTM D790): 10000 psi min.
5. Flexural Modulus (tested per ASTM D790): 1.2 x 10⁶ psi min.
6. Hardness (tested per ASTM D785): >85-Rockwell "M" scale min.
7. Thermal Expansion (tested per ASTM E228): 2.2 x 10⁻⁵ in./in./degrees F.
8. Fungi and Bacteria (tested per ASTM G21 & G22): Does not support microbial growth.
9. Flammability (per ASTM E84, NFPA 255 & UL 723): Class A.

2.3 SOLID SURFACING MATERIALS

- ### A. Polymer solid surfacing material: Non-porous surfacing material homogeneously composed of natural minerals and high-performance polymer, fabricated sizes and profiles as shown on the Drawings, in colors and finishes as selected by Architect.
1. Solid surfacing material shall be NSF (National Sanitation Foundation) listed under publication 51 - Plastic Materials and Components used in Food Equipment and bear the "component" mark.
 2. Colors and patterns shall be as selected by the Architect.
- ### B. Sheet thicknesses shall be as specified below or as otherwise indicated on Drawings.
1. Countertops: One piece monolithic design 12mm (nominal 1/2 inch) thick with solid plywood backing.
 2. Backsplashes: 12mm (nominal 1/2 inch) thick in locations and heights as shown on the Drawings.

2.4 ACCESSORIES

- ### A. Plywood backing for countertops: APA C-C PLUGGED EXT, fir plywood, sanded, thickness as indicated on Drawings.
- ### B. Adhesive for build-up of solid surfacing sheets: color matched two-component seam adhesive as provided by solid surfacing manufacturer.
- ### C. Adhesive for installation of trim components, neoprene panel adhesive or structural silicone glazing sealant, as recommended by solid surfacing manufacturer.
- ### D. Sealant for joints between countertops and dissimilar materials with backing materials as specified in Section 07 92 00 - JOINT SEALANTS.
1. Joint Sealer Type SM (Silicone, Mildew-resistant): USDA approved one component acetoxy silicone rubber, mildew resistant, acceptable to local health officials, conforming to U.S. Food and Drug Administration regulation 21 CFR 177.2600, and ASTM C920, Type S, Class 25, Grade NS, use NT, G

and A with a minimum movement capability of ± 25 percent, and a Shore A hardness of 20, equal to the following:

- a. BASF (Sonneborn), product "OmniPlus".
 - b. Dow Corning, product "786".
 - c. GE Silicones, product "Sanitary 1700".
 - d. Tremco, product "Tremsil 200 Sanitary".
 - e. Pecora, product "898NST".
- E. Sink/Bowl Mounting Hardware: Manufacturer's approved bowl clips, brass inserts and fasteners for attachment of undermount sinks/bowls.
- F. Bolts, nuts, washers, lags, pins, and screws: Of size and type to suit application chrome finish in exposed-to-view locations.
- G. Concealed supports for edge and corner backing shall be kiln dried birch or poplar.
- H. Heat Reflecting Tape: Manufacturer's standard aluminum foil tape, with required thickness, for use with cutouts near heat sources.
- I. Insulating Nomex Fabric: Manufacturer's standard for use with conductive tape in insulating solid surface material from adjacent heat source.

2.5 FABRICATION

- A. Coordinate the fabrication of solid surfacing products with that of the various trades responsible for installing materials and items which will be inserted into, or applied to, the countertop surfaces. Obtain and verify templates, dimensions, and instructions from the respective trades before making cut-outs, holes, slots, and other cutting in the countertops.
- B. Shop fabricate all solid surfacing items in strict accordance with the details on the Drawings, the approved shop drawings, and recommendations of the solid surfacing manufacturer.
1. Prepare countertops for undermount design sinks furnished and installed under Division 22 - PLUMBING.
 2. Prepare solid surfacing fabrications for installation of plumbing fixtures.
- C. Fit corners and joints hairline. Make all field joints and miters tight, secure with concealed fasteners.
- D. Provide shop fabricated counters, shop mitered components, closure trims with ample allowance for field cutting and fitting. Provide additional trim as required for scribing and site cutting.
- E. Where indicated, thermoform corners and edges or other objects to shapes and sizes indicated on Drawings, prior to seaming and joining. Cut components larger than finished dimensions and sand edges to remove nicks and scratches. Heat entire component uniformly prior to forming.
- F. Route all edges to be butted for a smooth, clean fit. Sand edges with 120 grit sandpaper to rough up surfaces for adhesive bonding. Clean with denatured alcohol.

- G. Prepare and apply adhesive in compliance with manufacturer's written instructions. Clamp all components using manufacturer's approved clamping methods at all joints and build-up laminations, maintain clamping until adhesive is set. Avoid over-tightening clamps and squeezing out adhesive.
- H. Remove excess adhesive when dry with router. Follow with belt sander using 120 grit, diagonal to joint. After adhesive is leveled and smooth with surface, proceed with final shaping and finishing.
- I. After shaping, smooth finish of cut surfaces equal to manufacturer's original finish. Sand surfaces smooth with wet 400 grit sandpaper. Remove superficial scratches and sander markings, buff with nylon buffing pads as recommended by solid surfacing manufacturer. Wipe surfaces clean and dry with cloths.
- J. Finished work shall be free from visible adhesive and pencil marks.
- K. Field touch-up: Shall be the responsibility of the installer and shall include the filling, and touch-up of exposed job made nail or screw holes, refinishing of surfaces resulting from job fitting, repair of job inflicted scratches and marks, and final cleaning up of the finished surfaces.

PART 3 - EXECUTION**3.1 INSTALLATION - GENERAL**

- A. General: Install work in accordance with manufacturer's instructions.
- B. Solid surfacing shall be installed plumb, level, true and straight without distortions:
 - 1. Use concealed shims as required.
 - 2. Work shall be installed to a tolerance of 1/8 inch in 8 feet for plumb and levelness, including tops.
 - 3. There shall be no variations in flushness of adjoining surfaces.
- C. Tops and trim shall be scribed and trimmed to fit adjoining work.
 - 1. Where cuts occur, refinish surfaces and repair damaged finishes.
- D. Secure solid surfacing fabrications to blocking directly attached to substrates.
 - 1. Secure fabrications using concealed fasteners.
 - 2. Anchor tops securely to base units and to other support systems as required.
- E. After installation and leveling of solid surfacing fabrications has been completed; apply a continuous bead of specified sealant to all joints which abut walls or partitions. Tool the sealant to a uniformly dense surface, level with the edges of the casework. Immediately remove all excess sealant from solid surfacing surfaces.

3.2 TOLERANCES

- A. Maximum variation from true position 1/16 inch with a maximum of 1/32 inch offset from true alignment with adjoining surfaces intended to be flush.

3.3 CLEANING

- A. Daily clean work areas by sweeping and disposing of scraps.

ADDENDUM #2

CALCUTT MIDDLE SCHOOL - FEI

Ai3 Architects, LLC

Central Falls, Rhode Island

BID PACKAGE #1

- B. Clean excess sealant by moderate use of mineral spirits or other solvent acceptable to sealant and solid surfacing manufacturers.
- C. Wash down exposed surfaces with a solution of mild detergent in warm water, applied with soft clean wiping cloths. Take care to remove dirt from corners. Wipe surfaces clean.

3.4 PROTECTION

- A. Protect installed fabrications in a manner acceptable to fabricator and installer, which shall ensure no damage or deterioration at the time of Final acceptance of Project by the Architect.

End of Section