

# RIVER ISLAND PARK

CENTRAL FALLS · RHODE ISLAND  
**BID DOCUMENTS**

DECEMBER 8, 2020

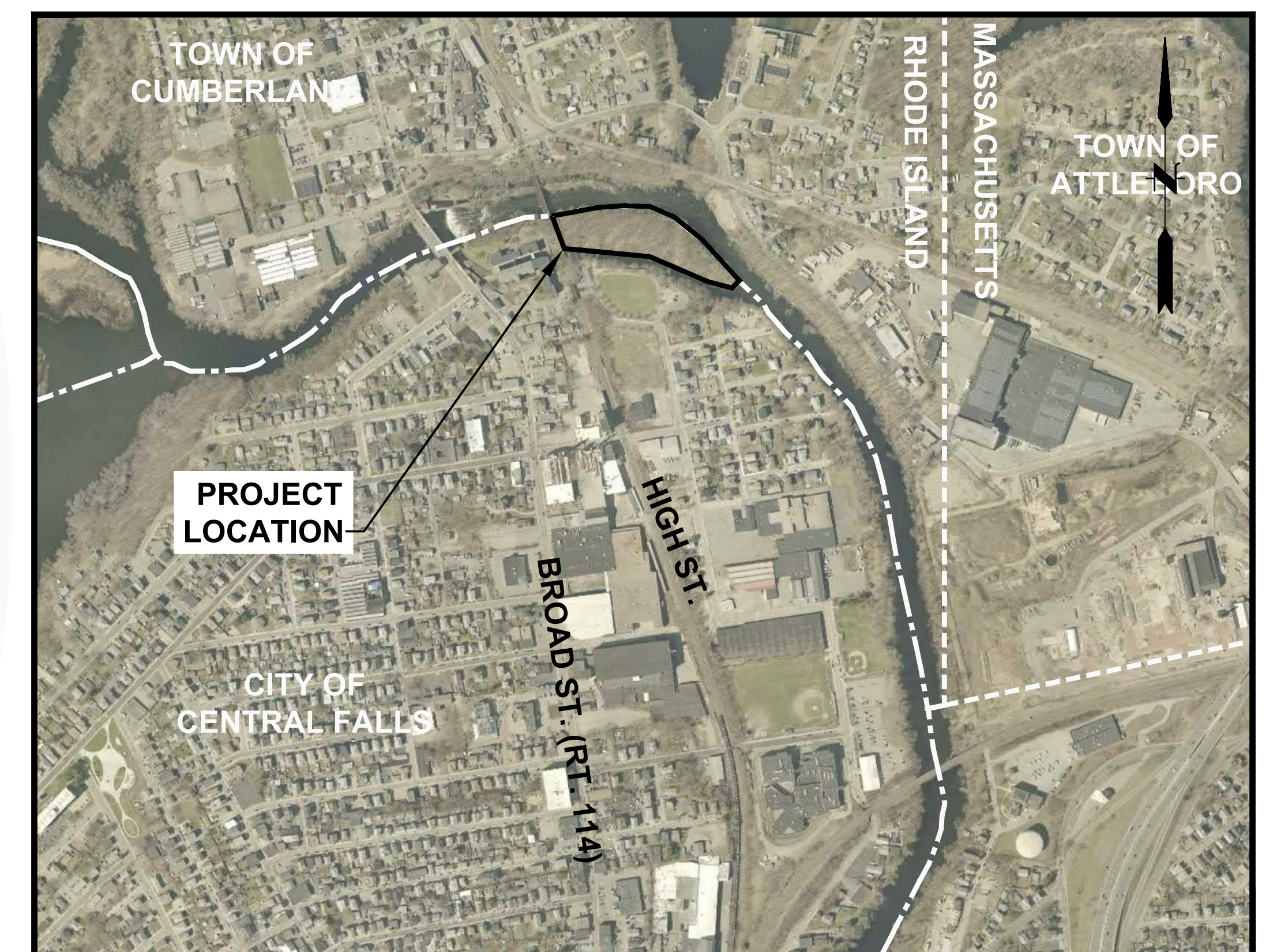
PREPARED FOR  
**CITY OF CENTRAL FALLS**  
580 BROAD STREET  
CENTRAL FALLS, RI 02863



PREPARED BY  
**FUSS & O'NEILL**  
317 IRON HORSE WAY, SUITE 204  
PROVIDENCE, RI 02908  
401.861.3070  
www.fando.com

## SHEET INDEX

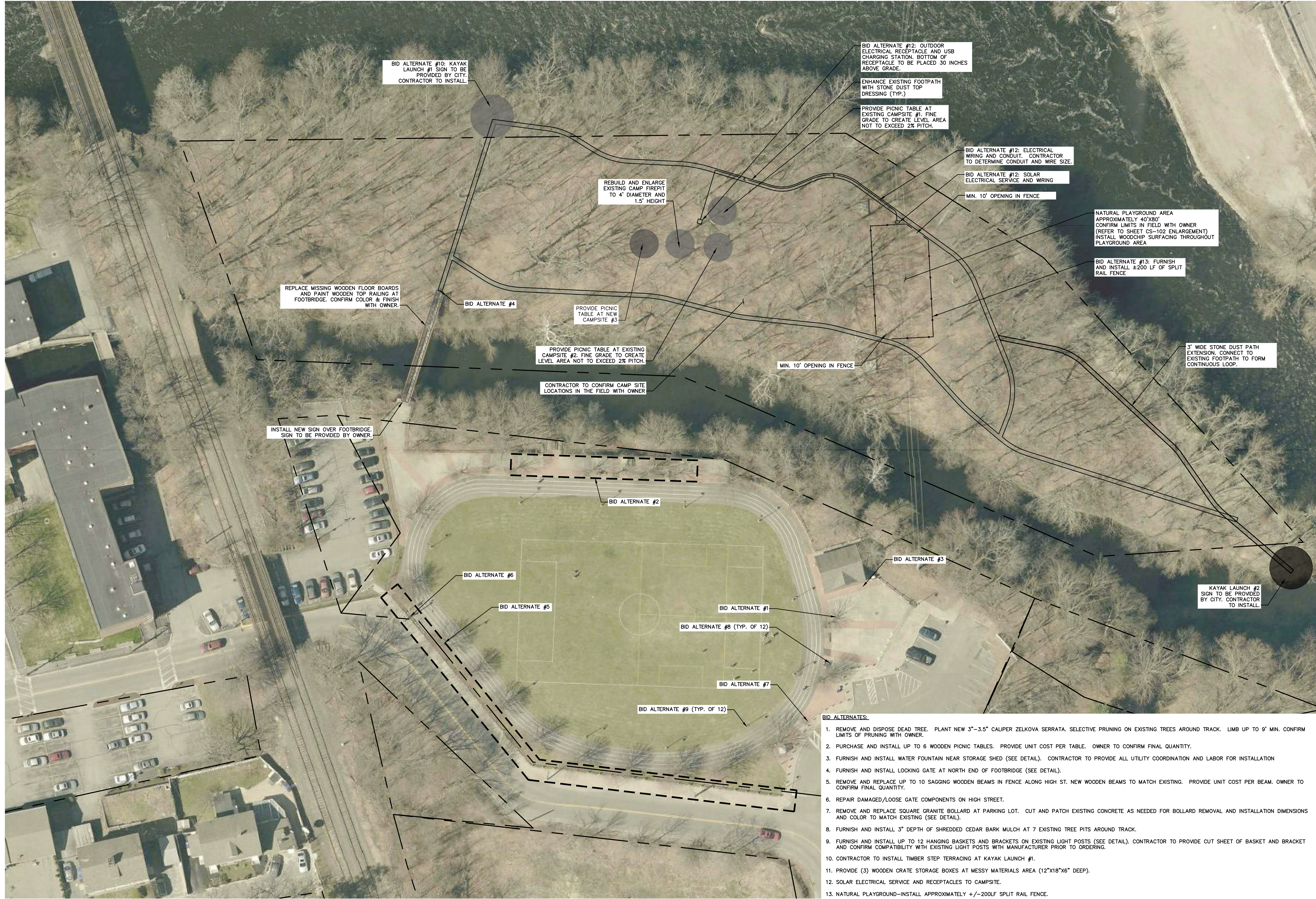
<u>SHEET No.</u>	<u>SHEET TITLE</u>
GI-001	COVER SHEET
EX-101	EXISTING CONDITIONS PLAN
CP-101	SITE PREPARATION & EROSION & SEDIMENT CONTROL PLAN
CS-101	SITE PLAN
CS-102	PLAYGROUND ENLARGEMENT PLAN
CD-501 - CD-504	DETAILS



**LOCATION MAP**  
SCALE: 1" = 500'

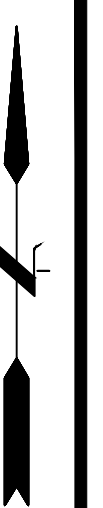






**BID ALTERNATES:**

1. REMOVE AND DISPOSE DEAD TREE. PLANT NEW 3"-3.5" CALIPER ZELKOVA SERRATA. SELECTIVE PRUNING ON EXISTING TREES AROUND TRACK. LIMB UP TO 9' MIN. CONFIRM LIMITS OF PRUNING WITH OWNER.
2. PURCHASE AND INSTALL UP TO 6 WOODEN PICNIC TABLES. PROVIDE UNIT COST PER TABLE. OWNER TO CONFIRM FINAL QUANTITY.
3. FURNISH AND INSTALL WATER FOUNTAIN NEAR STORAGE SHED (SEE DETAIL). CONTRACTOR TO PROVIDE ALL UTILITY COORDINATION AND LABOR FOR INSTALLATION
4. FURNISH AND INSTALL LOCKING GATE AT NORTH END OF FOOTBRIDGE (SEE DETAIL).
5. REMOVE AND REPLACE UP TO 10 SAGGING WOODEN BEAMS IN FENCE ALONG HIGH ST. NEW WOODEN BEAMS TO MATCH EXISTING. PROVIDE UNIT COST PER BEAM. OWNER TO CONFIRM FINAL QUANTITY.
6. REPAIR DAMAGED/LOOSE GATE COMPONENTS ON HIGH STREET.
7. REMOVE AND REPLACE SQUARE GRANITE BOLLARD AT PARKING LOT. CUT AND PATCH EXISTING CONCRETE AS NEEDED FOR BOLLARD REMOVAL AND INSTALLATION DIMENSIONS AND COLOR TO MATCH EXISTING (SEE DETAIL).
8. FURNISH AND INSTALL 3" DEPTH OF SHREDDED CEDAR BARK MULCH AT 7 EXISTING TREE PITS AROUND TRACK.
9. FURNISH AND INSTALL UP TO 12 HANGING BASKETS AND BRACKETS ON EXISTING LIGHT POSTS (SEE DETAIL). CONTRACTOR TO PROVIDE CUT SHEET OF BASKET AND BRACKET AND CONFIRM COMPATIBILITY WITH EXISTING LIGHT POSTS WITH MANUFACTURER PRIOR TO ORDERING.
10. CONTRACTOR TO INSTALL TIMBER STEP TERRACING AT KAYAK LAUNCH #1.
11. PROVIDE (3) WOODEN CRATE STORAGE BOXES AT MESSY MATERIALS AREA (12"X18"X6" DEEP).
12. SOLAR ELECTRICAL SERVICE AND RECEPTABLES TO CAMPSITE.
13. NATURAL PLAYGROUND-INSTALL APPROXIMATELY +/-200LF SPLIT RAIL FENCE.



SCALE: HORZ.: 1" = 30'  
 VERT.:  
 DATUM:  
 HORZ.:  
 VERT.:  
 30 15 0 30  
 GRAPHIC SCALE

**FUSS & O'NEILL**  
 517 IRON HORSE WAY, SUITE 204  
 CENTRAL FALLS, RI 02866  
 401.861.3070  
 www.fussandoneill.com

CITY OF CENTRAL FALLS  
 SITE PLAN  
 RIVER ISLAND PARK  
 CENTRAL FALLS, RHODE ISLAND

PROJ. No.: 20170811.A20	DESIGNER	REVIEWER
DATE: 12/08/2020	No.	DATE
CS-101	DESCRIPTION	











